



IDEAS SOUGHT FOR SHEEAN MEMORIAL REDEVELOPMENT

Latrobe Council is seeking your creative input to help redesign Sheean Memorial. To be located on the current Sheean Memorial site and reuse the existing memorial's elements, the Council proposes to broaden the memorial site to take in the whole of the irregularly shaped 935m² of public space, defined in red in the image below, with a low-cost, high impact 'wow factor' tribute that tells the story of all on HMAS Armidale (1).



The memorial elements will need to be safe and accessible for all users, ideally not enclosed in a building. It should integrate well as part of the local landscape, and not tower over its neighbouring two-storey shopping precinct, which will include an outdoor café visible from the site. The linkage to Sheean Walk should be maintained.

Council welcomes your creative ideas as to what the memorial precinct should look like as a space that creates an experience not to be forgotten but spoken about with reverence and respect. A place that people want to visit, experience and spend time enjoying while learning and honouring history.

Your input to help design any element of the memorial - large or small - is sought **by 31 March 2023** and may become part of the final design that the Council builds.

For more information, including the design brief, go to Public Notices at www.latrobe.tas.gov.au

LATROBE FLOOD MITIGATION

The resealing of Cotton/Victor Street was scheduled for late February, enabling that road to reopen. This will ease traffic along Gilbert Street and provides an alternate route when the Gilbert Street crossing commences in late March/early April. Those works will take approximately eight weeks and involves half the road being closed while it is dug up to install the culvert, then the other side is closed to connect it from Kings Park to the Cotton Street outlet. There will be traffic delays during this time with motorists encouraged to prioritise use of the Cotton/Victor Street route during this time.

The Kings Park inlet and culvert construction continues throughout March and April. To ensure pedestrian safety, nearby footpaths remain closed.

The River Road Earth Levee works are continuing. This affects the Bells Parade precinct with access and egress. Road users are reminded to comply with all signage in the area.



COMMITTEE SOUGHT FOR HENLEY-ON-MERSEY

Many in our community will have memories of attending Henley-on-Mersey and all that it provided on Australia Day at Bells Parade, Latrobe.

Council is very keen to work with the community to bring Henley-on-Mersey back in 2024 and is looking for

community members to become involved either as volunteers on the day or, to contribute to the organisation of the event by membership of a committee to be formed to manage the event.

A meeting for all those prepared to contribute in any way will be held on

Monday, 20 March at Hamilton Hub (formerly Senior Citizens Club), 18 Hamilton Street, Latrobe, commencing at 7:00 pm.

Your attendance and contribution would be greatly appreciated.

TOP 10 GRANT WRITING TIPS

Grant writing is no easy feat but before you abandon your next grant application, consider these handy tips on how to write a grant application. They'll not only prepare you for what's expected but may also help you craft a high-quality grant submission.

1. Determine why you require funding
2. Ensure eligibility
3. Rally community and legitimate support
4. Research the funding body and previous grant recipients
5. Be proactive about grants
6. Set some realistic goals and ideas for your application
7. A good budget always helps
8. Write the proposal with life and passion
9. Revise, revise, revise
10. Submit ahead of time

By following these tips on how to write a grant application you'll be ready for your next grant submission.

SMALL GRANTS OPEN

Round 1 of Latrobe Council's 2023-24 small grants open for application from 1 March for projects starting 1 July.

There are two opportunities for funding -

- **Emerging Needs Grants** encourage community partnerships that address an unmet need within the Latrobe Municipality in the fields of minor capital works, health and community welfare, environment as well as sport and recreation.
- **Arts, Culture, and Festival Sponsorship** nurtures new or established events and major festivals, builds our cultural identity, supports accessibility, and delivers a diverse range of community arts and cultural activities within the Latrobe Council area, assisting them towards self-sustainability.

Grant guidelines and application forms are online at www.latrobe.tas.gov.au/community/grants or phone 6426 4444.

Applications close at 12 noon on 1 May.

GRANTS

PRIVATE LANDOWNER - CLEAN-UP/ RESTORATION GRANT - TASMANIAN FLOOD AND SEVERE WEATHER EVENT SUPPORT - OCTOBER 2022

To assist with the financial costs of clean-up and restoration of properties for landowners that have suffered an economic loss as a direct result of the flooding and severe weather event in October 2022.

Grant amount: \$10,000 per property.

Eligibility criteria apply.

Closes: 2:00 pm, 3 March 2023

More information: www.dpac.tas.gov.au, email grants@dpac.tas.gov.au or phone 1800 204 224.

SPORT AND RECREATION EMERGENCY RECOVERY GRANTS

To assist with the costs of clean-up and reinstatement of not-for-profit, incorporated sport and recreation organisations that have suffered damage as a direct result of the severe weather event in October 2022.

Grant amount: \$25,000.

Closes: 2:00 pm, 27 March

More information: call 1800 252 476 or email grants@sportrec.gov.au.

TEDDY SHEEAN VC MEMORIAL GRANTS PROGRAM 2022-23 ROUND TWO

Provides funds to Tasmanian ex-service organisations and clubs for minor capital works and equipment purchases and welfare initiatives for veterans. Funds are also available to a range of organisations for the repair and maintenance of war memorials, and for the construction of new memorials in Tasmania.

Grant amount: Round Two is \$50,000.

Eligibility criteria apply.

Closes: 2:00 pm, 7 March 2023

More information: www.dpac.tas.gov.au/divisions/cpp/community-grants/teddy_sheean_grants_program, email grants@dpac.tas.gov.au or 1800 204 224.

TOURING GRANTS

Funding for auto, motorbike, cycle or walking tours in Tasmania during the winter and shoulder season.

Grant amount: up to \$20,000. The value of your grant is determined by how many people from outside Tasmania are taking part, and how long the tour lasts.

Eligibility criteria apply.

Closes: 31 May 2023.

More information: Events Tasmania on 1300 880 634 or info@eventstasmania.com

ARTS TASMANIA

This year Arts Tasmania will offer four grant programs in 2023 to support arts organisations across Tasmania present programs in 2024.

The guidelines for these programs are available on the Arts Tasmania website.

More information: phone 03 6165 6666 or email grants@arts.tas.gov.au.

FUNDING FINDER

The Cradle Coast Funding Finder is a free service that provides a comprehensive list of grant and funding opportunities.

The Cradle Coast Authority, of which Latrobe Council is a financial contributor, is proud to partner with GrantGuru to provide this service.

Updated daily, the site enables you to search and filter funding opportunities specific to your need. Simply go online to <https://www.cradlecoast.com/funding-finder/>.

You can also register to receive email alerts for new grants, save your favourites and access tips to maximise your chances of receiving the funding you need.

BUSINESS GROWTH LOAN SCHEME NOW OPEN

The Business Growth Loan Scheme is now open and provides loans to assist Tasmanian businesses to develop, expand or undertake new projects that promote growth in the Tasmanian economy.

The Tasmanian Government scheme provides loans of between \$100,000 and \$3 million at a concessional interest rate for loan terms of up to five years.

The scheme is open for applications until 14 September or until all funding has been allocated, whichever occurs first.

Further information and guidelines can be obtained by contacting Business Tasmania at ask@business.tas.gov.au or 1800 440 026.

COUNCIL'S WORKS REPORT

The following works are scheduled to be undertaken throughout the Latrobe Municipality during March and April:



CIVIL CONSTRUCTION AND MAINTENANCE

- Latrobe Reseals including Squeaking Point Road, Moriarty Road, Wesley Vale Road, Cherry Hill Road, Gumbowie Road and Native Plains Road

- Roadside mowing

TOWN SERVICES

- Replace and clear culvert pipes and pit lids
- Repair stormwater kerb connections
- Footpath replacement and repairs
- Public amenities upgrades
- General building maintenance
- Elderly Persons Units maintenance and refurbishments are ongoing.

GREEN SPACES

- South Esplanade - replace log fencing with bollards
- Park bin upgrades
- Playground equipment maintenance and repairs
- Town open drains and creeks cleaning
- Weed management in parks and reserves
- General parks and gardens maintenance

The new waste and recycling collection operation for Town Services and Green Spaces is now in full swing with the arrival of Council's new rubbish collection truck.

This has alleviated almost all the manual handling issues that were associated with the previous operation.

Should you have any queries in relation to the above works, please do not hesitate to contact Council's Operations Manager on 6426 4453.

WE'RE ALL PART OF THE STORY

Australia Day is a time to reflect on our history, its highs, and its lows. A time to respect the stories of others but also to celebrate our nation and achievements by all its people.

Australia Day in Latrobe started with an Australiana Concert by the Latrobe Federal Band. Attendees heard from the Australia Day Ambassador - Mr Robert Clifford AO of Incat Tasmania before Mayor Freshney announced Latrobe Council's Australia Day Award recipients.

The **Citizen of the Year** recipient was announced as Mrs Helen Boskell.

Mrs Boskell was acknowledged for her willing and enthusiastic contribution to her community.

For many years, she supported local health by making a room available in her home for medical professionals and well as forming a "Weight Watchers" group, hosting regular support meetings.

She has been a keen sportsperson and holds life membership with the Latrobe Badminton Club.

She played an active role in youth basketball, establishing the Port Sorell Junior Basketball Club and supporting teams in local rosters at Latrobe. She even coached and managed the Port Sorell Nomads team to a State U16 Championship in 1978.

While holding down "regular jobs", Mrs Boskell has volunteered with Meals on Wheels for nearly 50 years and, through that role identified a need for safe and affordable housing for the aged in the community. This led to the establishment of the Port Sorell Retirement Homes with four units. 40 years later, there are 10 units in that complex. Mrs Boskell continues to maintain an involvement with the Panatana Family Park.



Pictured (L-R) (Back) Jodie Kelly, Luke Cooper and Dylan Aram-Jones (Front): Australia Day Ambassador Robert Clifford AO, Emma Forbes, Helen Boskell, Amelia Burbury and Mayor Peter Freshney

The **Young Citizen of the Year Award** was presented to Amelia Burbury.

Amelia provides a positive impact in her community through the education and supervision of community members in and around our waterways.

This involvement is via the Port Sorell Surf Life Saving Club where she holds various positions, as a member of the Cradle Coast Aquatic Club and employment at Splash, Devonport Aquatic and Leisure Centre.

Amelia is also involved with football - captaining the Youth Girls Team at the Devonport Football Club and as a squad member of the Tasmanian Devils.

Amelia's initiative, leadership and interpersonal skills and qualities have deservedly been recognised by various organisations with this Award another to add to her achievements.

Latrobe High School was recognised for their Learning for Life Program via the **Community Event of the Year Award**.

This program engages students at Latrobe High School with various sectors of their community.

Of particular mention was the involvement with the Latrobe Senior Citizens Club, the creation of relationships across demographics, and the sharing of knowledge - from IT through to tomato sauce making.

Council congratulates Latrobe High School for entrenching this program within their school curriculum and embracing that life skills are as equally important as classroom learning.

Nominations for these awards close on 1 December annually. Nominations forms are available online at <https://www.latrobe.tas.gov.au/community/austdayawards>



The occasion concluded formally with Mayor Freshney conducting a Citizenship Ceremony.

Our community welcomed individuals from Germany, Kyrgyzstan, India, United States of America and Canada as Australian Citizens.

It can be a long road to becoming an Australian Citizen and enjoying all the privileges that it offers. As a result, these recipients (above) may already be familiar faces and contributors in our community. Welcome to you all.

THE GOVERNOR'S VISIT

Her Excellency the Honourable Barbara Baker AC was appointed to the position of Governor of Tasmania in June 2021. Since then, Governor Baker has regularly been visiting various communities, meeting with Tasmanians, touring local infrastructure, and familiarising herself with the beauty of our state.

The role of the Governor, as The King's representative, is apolitical and distinct from that of the head of the elected Government, the Premier.

As well as safeguarding Tasmania's Constitution, ensuring an orderly transition from one government to the next, and facilitating the work of the Parliament and the government of the state, the Governor also has many ceremonial duties and community roles in Tasmania.

Her community roles help to foster a sense of unity and promote values and ideals that support a strong community through mutual respect, tolerance, support, and goodwill.

Part of this role is to visit each of Tasmania's Local Government areas. On 29 March, it is Latrobe's turn to shine as Her Excellency participates in an Official Visit to the Latrobe Council area. An itinerary that encompasses as much of the Latrobe Council area and community contact within a strict timeframe is being developed. Associated with this visit, a Civic Reception will be held.

CAMP BANKSIA REDEVELOPMENT UPDATE

The Camp Banksia redevelopment is progressing on track with construction works scheduled for completion in July. Accommodation bookings are now being accepted for group stays from October.

The Banksia Centre remains busy with volleyball, netball, table tennis, pickleball, taekwondo, basketball and Port Sorell U3A all using the facilities on a regular basis. While there are different access arrangements in place, the venue has remained open throughout the reconstruction period with relatively minimal disruption to sport and recreation pursuits. There is still space in the calendar should more organisations or individuals be seeking a venue for sport and recreation pursuits.

If you would like to make a booking for the camp or Banksia Centre or just seek further information, please contact Taylah on 0448 286 121 or office@campbanksia.com



AMALGAMATION AN OPTION

Over the past 12 months, the Local Government Board has heard from Tasmanians on how important strong, sustainable, local communities are for the future well-being and prosperity of our State.

Local government - alongside our other levels of government, volunteers, community organisations, and local businesses - will play an increasingly important role in shaping and supporting our communities. To do this well, local government needs to have both the capacity and capability to provide the high-quality representation, services, and infrastructure that Tasmanians need and deserve.

This review is a once-in-a-generation opportunity to design a Local Government system that can respond to the growing demands and changing needs of our communities, now and in the decades ahead.

In December, the Board released the Future of Local Government Review Stage 2 Options Paper, which identified eight broad and ambitious reform outcomes. To achieve this, three (3) potential pathways were identified -

1. Significant (mandated) sharing and consolidation of services
2. Significant boundary consolidation to achieve fewer councils
3. A "hybrid" model combining both service and boundary consolidation.

Throughout February, a series of community forums were held to discuss the draft options for local government reform.

The full report is available at www.engage.futurelocal.tas.gov.au

The Board is currently reviewing the feedback from these forums and developing recommendations for inclusion in the final report of the Local Government Board.

Source: www.futurelocal.tas.gov.au/

DOG OBEDIENCE CLASSES

Dogs are much-loved extensions to our human families however, just like raising children, they require direction and discipline to learn socially acceptable behaviour.

With dogs, their interaction with others is dictated by legislation - the Dog Control Act 2000 - and, locally, Latrobe Council's Dog Management Policy. Both can be found online at www.latrobe.tas.gov.au/services/animalcontrol

It is a dog owner's responsibility to ensure that their dog acts appropriately at all times and that they reinforce behaviour and assist as required i.e. stop their dog from constantly barking, pick up their dog faeces when walking in the community, ensure a dog is on lead where required etc. Before bringing a dog into your family, you should investigate the breed - what health issues to look out for and especially ensuring that their needs are a good fit with to your family dynamic.

Sometimes a little extra dog obedience training is needed. Low-cost dog obedience classes are held at the Ulverstone Kennel Club Inc, 23 Esplanade, West Ulverstone each Sunday from 10:00 am until 12 noon.

These sessions are open to all dog breeds with training covering basic obedience and an option to expand into Rally and Obedience Trail training.

For more information, visit the Ulverstone Kennel Club Inc on Facebook at <https://www.facebook.com/ukcincshow/> or just turn up one Sunday.

COURTESY STOP

A 15-minute parking bay on the Lucas Hotel side of the Kings Creek bridge is being trialled to enable the drop-off and collection of passengers with undercover seating located nearby.

Motorists are reminded to comply with parking limitations where applicable. If intending to be parked longer than the designated time permits, please utilise carparks in Kings Park, behind Station Square and in Victor Street in Latrobe.

RECOGNISING VOLUNTEERS

People of all ages and backgrounds give voluntarily through many organisations to improving the quality of community life and build a stronger and more cohesive community.

Latrobe Council will publicly celebrate the valued contribution made by volunteers to our community at a Volunteer Recognition reception during National Volunteer Week (15-21 May).

Not-for-profit organisations and groups that provide community-based services within the Latrobe Council area are invited to nominate their organisation for recognition.

Additionally, they may nominate individuals of their organisation that have met specific hours of service (500, 1,000 or 2,000 hours) or milestone years (10, 20, 30 or 40 years) of continuous voluntary service.

Organisations will receive a Certificate on behalf of all volunteers within their organisation with individual recipients presented with their own Certificate.

More information and the nomination form is available at www.latrobe.tas.gov.au/community/volunteer-recognition or phone 6426 4444. Nominations close on 2 May.

CREATE BELONGING

So, you've started the New Year with your resolutions however there is one resolution or perhaps an intention that you could set, that would make a positive difference in your community.

No matter how small the amount of time and energy you're able to invest, why not commit to being more neighbourly and create belonging? Traverse the boundaries of age, background or lifestyle and start saying a friendly 'hello' when you see your neighbours. Perhaps offer to help with something, or even hold a small Neighbour Day event (last Sunday in March) to get your neighbourhood connected and chatting.

To find out more about Neighbour Day, go to <https://neighbourseveryday.org/day-of-action/>.

STAMP, COIN AND COLLECTABLES FAIR

Remember the date - 4 March - as it is the first of three Stamp, Coin and Collectables Fairs to be held at the Latrobe Memorial Hall this year.

For those born before 1990, a childhood stamp collection was a mandatory part of growing up. Everyone had one, and our parents and grandparents had one before us. Letters from afar came in envelopes with colourful stamps on them ready to be soaked off, dried and carefully placed in our albums.

Casting back nearly sixty years (up till 14 February 1966) Australia used pre-decimal coins. Half pennies, pennies, thrippences, sixpences, shillings and florins jangled in pockets, and our notes were 10 shillings, 1 pound, 5 pounds and 10 pounds.

These days stamp and coin collectors have a massive range of products to choose from. Items are available from Australia Post, the Royal Australian Mint, and the Perth Mint. There are stamp packs and Philatelic Numismatic Covers (PNC's), gold coins and silver dollars, in a multitude of denominations and colours. The fair on 4 March will have lots of other collectables on offer, including militaria, badges, bank notes and cards. Also, for the first time, there will be old valve radios. A highlight will be a 'stamp hunt' and a 'two cent coin hunt' for the kids.

Fair details are included on the Event page.

DISCOVER AND REDISCOVER THE JOY OF READING

5-11 March is Tasmania Reads.

Based on the National Australia Reads campaign, Tasmania Reads have partnered with communities to present opportunities to celebrate reading and storytelling.

Tasmania Reads might be the perfect time for you to check out a new genre, revisit an old favourite or explore Tasmanian authors in the State Library collection.

Tasmania Reads is bringing Library on the Lawn to the Latrobe Post Office Reserve on 8 March from 3:00 pm until 5:00 pm. Come along and join the library - it's free! Library members can choose a free book sale book. You can also borrow some items and find out how you can access the free eBook service.

If you are after some help with your tablet/phone, bring them along and library staff will help you find some answers. There will also be a Book Nook where staff will help you with your reading "prescription".

A Rock and Rhyme/Storytime session, giveaways and a sausage sizzle will also be available.

The regular open hours of the Latrobe Library, located at 113-115 Gilbert Street, Latrobe are 1:00 pm until 5:00 pm Monday, Tuesday, Thursday and Friday.



Did you know that parkrun is not just for runners? The philosophy behind parkrun is to help you get more physically active, regardless of your mobility.

parkrun is held worldwide every Saturday (rain, hail or shine), stepping off at 9:00 am sharp for a 5km walk, jog or run. Quite often participation starts socially with walking. It is truly inspirational when wheelchair-bound participants push themselves the whole five kilometres. Walks might then progress to a jog then a run, as you attempt to achieve personal bests each week. It is not a competition with others but your own self-improvement.

To have your time recorded, you need to register, which is a free and simple online process at www.parkrun.com.au/register/?section=form. Nominate either Port Sorell or Bells Parade as your home parkrun.

parkrun is dependent on volunteers. You could be an event day course checker, run director, timekeeper, hand out finish tokens, scanner barcode, marshall, tail walker, photographer or park walker. They are not onerous tasks with training provided. Why not check out the roster at www.parkrun.com.au/bellsparade/volunteer/ or www.parkrun.com.au/portsorell/volunteer/ and volunteer through their parkrun Facebook page or email.

DELTA THERAPY DOG WALK

Dog lovers are invited to join in the annual Port Sorell Canine Community Walk on Sunday, 19 March to support the Delta Therapy Dogs program.

The Delta Therapy Dogs Program involves a group of dedicated volunteers and their accredited dogs visiting North West Coast Aged Care facilities, adults with disabilities, youth services, and schools to share the joy of animal companionship. To support this program, Delta Therapy Dogs are hosting a Canine Community Walk at Port Sorell and would love you, with friends and family, and, of course, your dog to join them again. There is a choice of either a 2 km or 4.5 km walk. Registration commences at 10.30 am at Port Sorell Recreation ground (Rice Street, Port Sorell) with an 11.00 am start. The cost is \$8 per family or \$5 an individual with every registration having a chance to win a prize.

On return to the Port Sorell Fire Station, you can indulge in a perfectly cooked sausage by the Port Sorell Fire Brigade or take your dog through the agility course. For more information, please google Delta Therapy Dogs or just turn up on the day.

MUSIC FESTIVAL TO ROCK LATROBE

Imagine driving into a picturesque valley, surrounded by towering gums, with a city of tents, food and makers stalls, roving performers and good ol' Rock 'n' Roll blaring from the stage; flanked by the cascading Mersey River with euphoric crowds dancing and splashing about in golden afternoon sunshine.

Mandy Traill of Latrobe's Tribe Connections Wellness Centre has a vision. She has made it her mission to see this image come to fruition at Lovett's Flats, tucked discreetly behind Latrobe.

"We have some fabulous local talent and we want to support our local bands," Mandy says. "We want to give the community a festival we can be proud of."

The land, owned by Stuart Smith, has long been a beloved campsite for the community to enjoy, and now, with his blessing, it will host the 'Love It Music and Camping Festival' on 25 March. With crowd favourites The Ringmasters, Kitty & The Heartbeats, Wotevas, The Ethyls and Time Out, the music line-up is sure to have patrons up and about. There will also be roving performers from Goddess Burlesque Co, local food and drink vendors and plenty of room for caravans, campervans and tents, for recuperating after hours of dancing and activities.

This inaugural festival is sure to be a success, as each step of the organisation process has fallen into place, with the assistance of their tribe of vendors, and special mentions go to Matt from RMS Productions and Kitty Martini for their contributions.

Tickets for the Love It Music and Camping Festival on 25 March are on sale now via Eventbrite. More information can be found on the Tribe Connections Wellness Centre Facebook and Event page.

OUTSIDE SCHOOL HOURS CARE

Many schools throughout the Latrobe Council area offer care for children outside normal school hours, including before or after school and non-school days.

To access these services, please ask at your school office.

FIND A LANDCARE GROUP

Landcare Tasmania is a grassroots movement of people rolling up their sleeves and getting their hands dirty with Landcare projects. Quite often though, they need of an extra set of hands. This is where you can help.

If you would like to make a difference in your community, go online to https://www.landcaretas.org.au/get_involved_now and use the search bar to find a group near you. Click on the group's name to find out more about them.

FIREARMS FEEDBACK SOUGHT

The Government recently opened consultation on the Firearms Amendment (Community Safety) Bill 2023.

The proposed amendment seeks to:

- Automatically cancel and refuse firearms licences for members of outlaw motorcycle gangs;
- Automatically cancel firearms licences for people in possession of shortened firearms such as sawn-off shotguns;
- Prohibit the unlawful manufacture of firearms parts or ammunition through emerging technologies such as 3D printers;
- Make 'toy' firearms such as gel blasters firearms under the Act so it is an offence to use these to threaten, intimidate or conduct criminal activity.

The Bill also seeks to adopt changes made to the National Firearms Agreement to reclassify lever-action shotguns.

Consultation is open until 17 March at <https://fas.police.tas.gov.au/firearms-2023/>

PITCAIRN RESERVE TIDY UP

Rotarians will have their BBQ cooking skills on show as they participate at Library on the Lawn (Latrobe) on 8 March, at Bunnings (Devonport) on 2 April and are finalising a BBQ for seasonal workers.

Members are also looking forward to entertaining RSL Members on 26 April with a meal and a guest speaker. Along with planning a major fundraising event later in the year, their Project Service Committee are also organising a working bee in Pitcairn Reserve, Port Sorell, aligned to the reserve's management plan.

If you would like to help make a difference in your community then ask about joining Rotary or help out at their activities by calling Secretary John on 0457 883 006 or Membership Chair Peter on 0404 871 137.

Rotary meet on the first and third Wednesday at the Hamilton Hub, 18 Hamilton Street, Latrobe.

DULVERTON ORGANICS TRANSFORMATION

Works are underway at the Dulverton Waste Management compost site to build a state-of-the-art in-vessel composting facility.

The new plant was approved by the Environment Protection Authority (EPA) in November 2022, with the assessment noting that there would be significant improvement in the environmental performance when making compost in the new facility. The project will reduce the risk of odour nuisance to houses near the site, as all air will go through scrubbers and biofilters prior to release.

Making the compost in enclosed tunnels also has the benefit of reducing the time to make the product and improving the consistency of the compost; issues that have been a challenge through recent wet seasons.

The new facility is designed to handle household organics as green bins roll out across the region, as well as factory food waste, and will be instrumental in achieving a reduction in landfill over the coming years. Composting is cheaper than landfill, with the added benefit of reduced greenhouse emissions and improving soil health on local farms as the compost returns to the fields.

SOIL TESTING TOOL

Our region is home to exceptionally productive landscapes across a variety of soil types. Despite this, farmers face many challenges to maintain this productivity, including the high cost of fertilisers, environmental pressures and the high-intensity nature of agriculture in the region. Soil testing is an important part of farm management however the results can often be complex and confusing.

The Cradle Coast Soil Extension Program has been running workshops on understanding soil testing and what this means for practical land management. Participants also receive a subsidised soil sample and dedicated one-on-one support to translate these learnings to their properties.

If you are interested in the soil extension program, or further information, contact Nick Jamson (Soil Extension Officer): njamson@cradlecoast.com

This project is delivered by Cradle Coast Authority through funding from the Australian Government.

Source: *Cradle to Coastlines, Cradle Coast NRM*

PREVENTING DEMENTIA

With the ageing of the world's population, dementia is now one of the most significant health, social and economic issue of the 21st century.

A substantial proportion of dementia risk is associated with advanced ageing as well as genetic risk factors, but the latest research has indicated there are factors you can modify which may decrease your susceptibility to dementia and it's never too early or late to start reducing your risk.

The UTas Preventing Dementia short, online course investigates the best available evidence about dementia prevention, drawing on a range of expertise from around the globe.

To obtain the most from this opportunity, participants should expect to spend approximately two hours per week engaging with the content and completing related course activities, not exams though. The content is released weekly, from 16 May, and is accessible across six weeks, enabling you to work at your own pace. Knowledge is the key to understanding prevention.

To register for this free, online course, go to <https://mooc.utas.edu.au/course/32>

ARE YOU LIVING WITH OR BEYOND CANCER?

PC4, funded by Cancer Australia, provides key advice on research directions and priorities from a consumer perspective that supports the development of high-quality cancer research in primary care.

They are currently seeking 4-5 new representative roles for at least 12 months on their Community Advisory Group. Expressions of interest close on 3 March. To find out more, go to: <https://pc4tg.com.au/about-us/our-people/community-advisory-group-2/>.

LOW FUEL REDUCTION BURN PRIORITY

Pitcairn Reserve has, in the past, been flagged as an area for a fuel reduction burn by the Tasmania Fire Service.

The primary driver was the protection of the school from a short fire run out of the reserve however, in recent years, a break has been installed on the boundary. This ensures that the school meets compliance standards, qualifying for the highest rating of bushfire protection.

As a result of this upgrade, the school is now considered safe for children to shelter in place in the event of a fire in the reserve. Because of this, Pitcairn Reserve is no longer a priority for the Tasmania Fire Service to undertake a fuel reduction burn there. For the most part, the Tasmania Fire Service's program focuses on delivering units in large continuous areas of bush and not

fragmented reserve blocks. This is because the risk reduction benefit is greater in these larger forested areas where both the ignition probability and the potential for the fire to exceed the capacity of first responders to suppress it is higher in these areas. As such, a fuel reduction burn in Pitcairn Reserve is deemed by the Tasmania Fire Service as a low priority in terms of triaging programs.

Additionally, burning a single block in one go is not advisable in that it is likely to have adverse environmental impacts including smoke impact on neighbouring properties and little room for fauna to retreat, persist and repopulate later.

This is not to understate that there is no risk there, just that a burn is not currently within the remit of the Fuel Reduction Program.

BUSINESS INFORMATION AND HAPPENINGS

BUSINESS BENEFITS

On 18 January the Kentish and Latrobe Independent Business Association launched its benefits programs for local businesses. KaLIBA has partnered with various organisations and experts to deliver programs to every business across the Kentish and Latrobe municipalities, providing support and education in areas such as:

- Small business regulation and process reform
- Digital capability and telecommunications infrastructure
- Staff, skills, and employment
- Business resilience and adapting to change
- Communication, support services, networking, and lobbying.

If you are a local business person and would like a copy of this Guide, email contactus@kaliba.org.au or download a copy from the KaLIBA Facebook page - <https://www.facebook.com/mykaliba>.

SHEARWATER HEALTH AND FITNESS COMING SOON

A new health and fitness centre is coming to 24 Shearwater Boulevard, Shearwater, right next to the Pommy Paul's IGA. Facilities will include a 24/7 Gym, Group Training, Personal Training, Clearlight Infrared Two-Person Sauna and NormaTec Compression Recovery Boots. Having lived and worked in the community for over 10 years, Alex Baldock and Sammy Lawrence have dreamt of providing the Port Sorell area and surrounds with a state-of-the-art health and fitness facility.

Alex has been involved in a variety of sport from an early age and is currently a Development Coach with the Tasmania Devils High Performance Football Academy.

As a high achieving sports person and qualified in Exercise Science, Sammy worked as a Personal Trainer and Recreation Facility Manager before moving into numerous Health and Wellbeing roles within the Department for Education, Children and Young People. They are proud to see this dream become a reality and look forward to making a positive impact in the community by creating opportunities for people to become the healthiest versions of themselves.

Follow them on Instagram and Facebook to stay up to date with opening information, memberships and pre-opening promotions.



GROUP RUNNING COACHING AT PORT SORELL

Running coach, Brian Lyons, has expanded his Everyday Lions Running Coaching to Port Sorell.

Everyday Lions Port Sorell is held every Tuesday from 5:30 am at either Shearwater Park or the Port Sorell Recreation Ground.

The sessions involve a running dynamic warm-up, a 10-minute jog, stretching, strides, interval sessions including hills, short reps, long reps, tempo runs, fartlek training, progression runs in short running/walking activities, and 10-minute warm down. Each session is an hour in duration and a paid subscription service. To register to participate in these sessions, go online to <https://everydaylions.org/port-sorell-group-training/>



CHOCOLATE BOOK RELEASE

Igor Van Gerwen's long-term vision in composing a book about cacao and chocolate has come to fruition with the launch of "Chocolatier, Igor Van Gerwen - Anvers, Tasmania".

Mr Van Gerwen, the owner and head chocolatier of Latrobe's Anvers Confectionery, has teamed up with Philip Kuruvita, Launceston's Grand Master of Photography to create this fantastic 223-page insight into Chocolate.

"Chocolatier" is a beautiful read taking you through a journey of Mr Van Gerwen's cacao hunting adventures in remote areas like Northern Peru and Southern Mexico as well as the mythical and mystical history of chocolate from the Maya to modern Europeans. It includes practical chocolate recipes for the home cook to the more challenging recipes from the guest chefs.

"Chocolatier" is available from selected bookstores and specialty shops including the Hill Street Grocer and Anvers Tasting Centre, 9025 Bass Highway, Latrobe.

NEW DANCE GROUP IN LATROBE

Studio 8:1 Dance Company introduces the newest dance studio to the Latrobe community.

A school focused on fun, creativity and self-growth; classes are offered for all ages from little Tiny Tots all the way to senior students. The classes are filled with love and passion, giving each student a chance to shine.

Students are taught the basics of Ballet, Jazz and Lyrical/Contemporary work with performance opportunities.

The Studio at the Latrobe Memorial Hall provides a safe and professional environment and is the perfect school to bring your child to dance.

Classes will be held at 3:30pm on Tuesdays and Wednesdays, with the Tiny Toys 'Dance with Me' class on Tuesday mornings at 10:15 am. New enrolments are welcomed at any point in the school term. If you have an enquiry, please ask through their Instagram and Facebook pages, email studio8.1dance@gmail.com or check out their website at www.studio81dance.com



HOPE IN A SUITCASE 'PACK A LITTLE JOY'

Grandala Boutique at 85 Gilbert Street, Latrobe and the Port Sorell Primary School, Pitcairn Street, Port Sorell are drop-off points for donations to the Hope in a Suitcase program.

Hope in a Suitcase Australia is a non-profit organisation run by volunteers who are incredibly passionate about showing every child in the foster care system that they are loved and valued by their community.

They do this by giving them a suitcase of their own filled with their personal belongings. The effects of 'Hope in a Suitcase' is empowering and makes room for positive change for foster children in a way that nothing else can.

There are many ways in which you can help provide suitcases of hope to precious children and young people across Australia.

- Donate items to fill the suitcases - there is a list of items needed per age group at <https://hopeinasuitcase.com.au/donation-items>
- Donate to purchase suitcases or items needed - hopeinasuitcase.com.au/contact-us
- Share their vision and offer to be a donation collection point
- Like and share their Facebook page - www.facebook.com/HIASCTAS/

FREE WEBSITE DESIGN SERVICE FOR NON-PROFITS

In retirement, John Boswarva was looking at what he could do to keep his mind active. His working career had been in sales and marketing, retiring from a position of Managing Director of an Australian Manufacturing Company. This involved a working knowledge of digital media and how to best promote product online.

Deciding to put that knowledge to use has led Mr Boswarva to establishing Tas-Web - a free website creation service for non-profit organisations throughout Tasmania. While there are no costs for the design process you will be responsible for annual domain and hosting costs provided by third parties.

If you are a not-for-profit group and would like to connect in your community and tell your story on the web, please contact Mr Boswarva via <http://www.tas-web.com>

APPLICATIONS OPEN FOR BOOTCAMP INCUBATOR

Seedlab Tas's Bootcamp is a free incubator program for Tasmanian start-up businesses of 1-3 staff that produce consumer goods. Over 6-weeks, Bootcamp will connect you with a like-minded business community network who are all starting and scaling their businesses and taking their products to the next level. It is ideally suited to businesses producing fresh, and value-added food and drink products, and other consumer products for local, interstate and international market.

The program offers access to a stellar team of industry experts who will support you with the knowledge and skills to launch your business into a success.

Best of all, its free so, whether it's for yourself or you want to refer a friend - now is the time to apply at <https://seedlabtasmania.com.au/apply/>.

Applications close 5:00 pm on 1 March.

NEW APPRENTICESHIP SCHOLARSHIP PROGRAM

The New Apprenticeship Scholarship Program supports eligible apprentices and trainees in North-West Tasmania to undertake training in the Agriculture, Aquaculture and Forestry, Transport and Logistics and Health and Social Assistance industries.

The program provides scholarships of \$2,000 for full-time and \$1,000 for part-time apprentices and trainees over 18 years of age.

The scholarship can be used for things such as student fees, books and materials, transport, childcare or other items or services that will assist them to participate. For further information, go to www.skills.tas.gov.au/funding/new_apprenticeship_scholarship_program.

ART IN FOCUS

Welcoming in the new year has seen The Crowded Lounge - Fine Coffee and Fine Art at Latrobe busy with visitors enjoying the monthly feature artist and getting to glimpse the art classes and workshops on offer.

These sessions include a seniors art class, an art class for NDIS recipients and their workers, a beginner's art class as well as an after-school children's art class. Pam Lockwood's watercolour workshops continue to be held on the second Tuesday of each month with Ros Barnett's workshop on a Sunday afternoon. Details of all these events can be found at www.facebook.com/TheCrowdedLounge/ events.

The feature exhibition for March is a Group Student Exhibition - a collection of artworks painted by students during their art classes at the Lounge. This will transition in April to an exhibition by Mary Kegan. Mary works in oils with portraits of celebrities and animals.

You can also come and use a table at the Lounge to study or have a meeting in the overflow seating and mini gallery room.

YOUR JOB SEARCH WITH EMPLOYMENT PLUS

Do you have a health condition, injury or diagnosed disability that is hampering your ability to re-enter the workforce?

Finding a job can be tough. From the highs of securing interviews to the lows of being knocked back, The Salvation Army Employment Plus in Devonport are ready to assist.

They recognise that "It's never just a job" and that every person who walks through their door has a completely different set of aspirations and needs when it comes to employment.

They are passionate about helping their job seekers find a job that suits them by offering one-on-one support to get the most out of your employment search.

They will tailor assistance to your abilities, capacity, and circumstances, working with you at your own pace towards employment.

The Salvation Army Employment Plus also work with local employers too. If you have vacancies that you are trying to fill, they have a pool of stand-out, job-ready clients looking to commence right away!

Please reach out to their friendly team - Jess (Job Coach) 0417 602 960 or Kate (Team Leader) 0427 883 246 - for a no-obligation chat to see how they can best assist you.

Employment Plus Devonport is located in the Devonport Citadel, 166 William Street, Devonport.

YOUTH OF THE YEAR

The Lions Club of Port Sorell is busily preparing for the annual Youth of the Year contest by hosting not only their Club Final but also the State Final.

The Youth of the Year contest is a national Lions Club initiative open to youth aged 15-19 years and involves them being interviewed on their aspirations and world events as well as publicly speaking on a prepared and unprepared topic. Typically, 3-5 contestants participate per club, with the winner progressing to the North-West, North or Southern regional final.

The Port Sorell Club final will be held on 19 March while the North-West regional final is scheduled for 26 March. The State final will be held on 1 April with the Tasmania winner competing at the Gold Coast Lions National Convention in April. If you are willing to take part in a worthwhile activity, please contact the Lions Club of Port Sorell convenor Diane on 0419 892 271.

To run this event successfully, the club needs nine independent judges. Lions Club members are not permitted to be on the judging panels. This is a voluntary role to support youth in the area. If you can help, please contact Diane.

The Port Sorell Lions Club are progressing plans for another Mulled Wine in May at Shearwater Resort on 27 May. This festival includes mulled wine, coffee, food stalls and great music in a family-friendly atmosphere.

As a volunteer organisation the club is always seeking the input of new people to contribute to their broad range of activities. If this is you, please contact Diane as above.

FUN AND FRIENDSHIP

The Rubicon Combined Probus Club offers friendship and fun to retired or semi-retired men and women through social outings, lunches, and interesting Guest and Person Behind the Badge speakers.

There is no fund raising. If you choose to join, it will only cost you a Joining Fee of \$10, Annual Subscription of \$25 and Monthly Attendance fee of \$5 (includes morning tea and lucky door prize). Meetings are held on the 4th Wednesday of each month at 10:00 am at the Port Sorell Golf Club, Shearwater Blvd, Shearwater. Membership is not restricted to the Port Sorell area. Everyone is welcome.

In March, members will visit a Bird Sanctuary with other activities planned throughout 2023.

For more information, contact President Lynette (0409 965 341) or Secretary Margaret (0427 261 224).

MEAD TO COMPETE INTERNATIONALLY

As mentioned in the previous newsletter, one of the Latrobe Croquet Club's members, Curtis Mead, was attending the National U21 Championships in Brisbane. Curtis won gold in that competition for which he received a magnificent trophy and a large gold medal. He also received a fully funded trip to New Zealand to attend the NZ U21 Championships in February. In April Curtis will competes in the U21 World Championships. Hopefully, Curtis' efforts will encourage more young players to take up the sport.



The club will be holding introductory croquet sessions for U3A. This is something the club has done in the past and found it a great way to introduce new members to the sport. Should you wish to try this fun sport, please give Chris a call on 0499 990 239.

All equipment is supplied. You are only required to wear flat soled shoes.

COME JOIN U3A

Classes for Port Sorell University of the Third Age (U3A) commenced in February and are proving to be very popular. There are 35 classes with in excess of 150 members, most of whom are returning. Some classes run all year, others for a few weeks and special events occur throughout the year. Watch out for the latter as they occur.

While Port Sorell U3A have many continuing courses, they also have many new programs including Cabinets of Curiosities; Croquet for Beginners; Euchre; Drawing for Beginners; How to use your ancestry DNA results; Introduction to Enneagram; Learning Mah-jong and starting a Worm Farm For more information about these and existing courses, please go to the website www.portsorellu3a.org.au, call in to their office at Camp Banksia, 1 Anderson Street, Port Sorell or phone them on 0499 162 539.

HISTORIC SKETCHES OF BUILDINGS ON DISPLAY

Throughout 2023, the Tasmanian Family History Society Inc. Mersey Branch are displaying sketches and photographs of the Latrobe District in their front windows which is located behind the Post Office reserve, in the old Police residence. Please take a moment to see some interesting history.

From the sketch books by Josephene Badcock, buildings, homes, Churches in Latrobe combine with historical notes. Over the following months there will be sketches from Moriarty, Northdown and Sassafras. More sketchbooks of the North West are available to purchase. The Mersey branch are most appreciative of

the permission Josephene has given them to display her beautiful work.

Mersey Branch's Annual General Meeting will be held on 22 April at 1:00 pm at the Family History Library. Anyone with an interest in family history or local and state history is welcome to attend and become a part of the general running of this not-for-profit organisation with input into future projects. If you are more interested in 'doing' things, there is always the volunteer work of indexing historical documents, assisting people to find their ancestors and/or learn about the area. Enquiries to Secretary Sue-Ellen 6428 6328 or Ros 0476 008 531.

NEW YEAR - NEW FACEBOOK PAGE

Rubicon River Arts Inc recently launched a NEW Facebook page - www.facebook.com/rubiconriverartsinc.

The new group page can be distinguished by the clear round blue circle and the full writing of Rubicon River Arts Inc. Your likes and sharing will assist in raising awareness of this new page.

Throughout the year, members of Rubicon River Arts will be displaying their talent in the Latrobe Art Hub, co-located with the Latrobe Information Centre on the corner of James and George Streets, Latrobe.

If you would like to view unique art and perhaps purchase an item, please call in. Additionally, a variety of workshops will be held throughout the year. These are open to both members and non-members however joining the group does provide you with discounted participation as well as an opportunity to host your own exhibitions and workshops.

For more information, contact Vice President Rasa on 0419 298 254 or email rubicon-river-arts@googlegroups.com.

PURL AND PURR BRIGADE

Rescue kittens are being kept snug and warm thanks to a group of residents at Uniting AgeWell Latrobe Community Strathdevon. The group of up to eight residents meets weekly to knit strips which volunteer Lesley Daking sews up into blankets and donates them to the Latrobe branch of RSPCA Tasmania.

A spokesperson for the organisation says all contributions are gratefully received - especially by the kittens, which they try to rehome.

Lesley started volunteering at Strathdevon in 2019 and loves spending time with what is best described as a knit and natter group. "We chat about everything under the sun, we share a lot of laughs, and all get on very well," says Lesley.

Volunteering also brings a sense of purpose, to both Lesley and the residents, who are all delighted to be able to make a difference. And Lesley, who retired after years of working in the disability sector, has a soft spot for kittens. Especially disabled ones. She and her husband, Raymond, have two three-legged cats, George and Maggie.

Lesley knows Strathdevon very well. Her mum was there before she passed away a few years ago.

"The staff are all lovely, we all get on very well. It's a friendly caring place," says Lesley. "And they absolutely value volunteers. I know I'm appreciated - they always tell me so!"



From left, Jean Bird, Lesley Daking and Dawn Jaffray knitting for kittens.

COMMEMORATING ANZAC DAY

A day of national remembrance, ANZAC Day is held on 25 April and marks the anniversary of the first major military action fought by Australian and New Zealand forces during the First World War.

When war broke out in 1914 Australia had been a federated nation for only 13 years, and its government was eager to establish a reputation among the nations of the world. When Britain declared war in August 1914 Australia was automatically placed on the side of the Commonwealth. In 1915 Australian and New Zealand soldiers formed part of the expedition that set out to capture the Gallipoli peninsula to open the Dardanelles to the allied navies. It did not go as planned with Gallipoli having a profound impact on Australians at home and 25 April became the day on which Australians remember the sacrifice of those who died in the war.

There are three ANZAC Day

Commemorative Services in the Latrobe Council area - Latrobe Dawn Service, Port Sorell Dawn Service and the Latrobe Citizens Commemorative Service. Details and timings are included on the Events page.

Returned and serving veterans, cadets, schools and community organisations are invited to march as a collective to the Latrobe Dawn Service and/or the Latrobe Citizens Commemorative Service. There is no march for the Port Sorell Dawn Service.

Registration of your organisation and how many will be participating is essential for both Marches and should be made directly with the Latrobe RSL via email to latrobersl2@gmail.com prior to Easter.

This enables a plan to be developed to place participants in the appropriate order. The only Service with wreath-laying is the Latrobe Citizens Commemorative Service. A unique aspect of this is that many organisations lay a book in lieu of a wreath which is then passed on to their nominated aged care facility or school within the Latrobe Council area.

If you are wishing to lay a wreath or book, please register your organisation's name via email to council@latrobe.tas.gov.au or phone 64264444 prior to Easter.

Please note that road closures in Latrobe will affect James Street (between Gilbert and George Street); Gilbert Street (from Victor Street to James Street including the Hamilton Street intersection). Motorists are asked to detour via Cotton/Victor Street.

With limited street parking around Pioneer Park, Port Sorell, there will be a drop-off area for mobility impaired persons. Please follow the direction of traffic marshalls and the temporary signage.



The traffic management plans will be in effect half an hour prior to and during the Services.

In the event of a torrential downpour, the Latrobe ANZAC Day Services will be held in the Latrobe Memorial Hall.

Wearing your wet weather apparel is recommended if the Port Sorell Service is affected.

MUSIC FROM THE WAR YEARS CONCERT

The Latrobe Federal Band will present their annual concert - Music from the War Years - on Sunday, 23 April.

The concert will feature key tunes from the war years - some old favourites, but also a couple of pieces that are new to the band's repertoire.

The performance will be held at the Latrobe Memorial Hall commencing at 2:00 pm with tickets available at the door for just \$10 per adult. Cash or card accepted.

For more information, contact David on 0408 262 187.

THE LEGACY CENTENARY TORCH RELAY 2023

In 1923, Legacy made a promise to help veterans' families carry on with their lives after the loss or injury of their loved one. It was a simple promise that Legacy keeps today; providing the same stability, guidance and assistance that a partner would normally provide to his or her family.

As of 2023, Legacy will be celebrating their centenary of service to veterans families with The Legacy Centenary Torch Relay 2023.

Beginning in Pozieres, France in the lead up to ANZAC Day in 2023, the Centenary Torch will travel over 50,000 kilometres

through 100 locations worldwide, carried by approximately 1,500 Torch Bearers, stopping at all 45 Legacy Clubs.

Council congratulates Mary Mathews on being selected as a Legacy Torch Bearer in a Tasmanian leg of The Legacy Centenary Torch Relay 2023.

Eligibility required a personal connection to Legacy and/or the Defence Force.

Mary's relationship with Legacy arose when her father passed away. Mary's daughter and son-in-law and his son are current serving members of the Defence Force.

To stay up to date with the Legacy Centenary Torch Relay 2023, visit legacytorchrelay.com.au.

ANZAC DAY TRADING RULES

Under the *ANZAC Day Observance Act 1929*, it is an offence to open a shop before 12:30 pm on ANZAC Day.

If a non-exempt shop is open before 12:30pm, the occupier may be fined under section 5A of the Act.

The ANZAC Day trading restrictions do not apply to shops that the Minister approves opening before 12:30 pm including pharmacies; newsagents; bottle shops; cafes and restaurants; service stations; car yards; real estate agents to the extent that they are conducting an auction at the premises; and shops that are part of a large shopping complex with many shops and the number of employees in that shop on any day in the most recent month of March is not more than 10 people.

It is also an offence to require an employee to work on ANZAC Day (or any other public holiday) without the employee's written agreement. If you do not comply with this, you may be fined under the Act.

COMING SOON TO A VENUE NEAR YOU

MARCH

- 3 Schools Clean Up Day:**
www.cleanupaustaliaday.org.au/
- 4 Devonport Stamp and Collectables Fair** in the Latrobe Memorial Hall, Gilbert Street, Latrobe from 9:30 am until 2:30 pm. Cost: \$2 adults, kids free. Enquiries: 0407 335 487
- 5 Tasmanian Dressage Championships** at 291 Squeaking Point Road, Thirlstane from 8:30am until 5:00 pm Saturday and 8:30am to 3:00pm Sunday. Free spectator entry. Food and refreshments available. ☎ 0447 557 563
- 5 Clean Up Australia Day:**
www.cleanupaustaliaday.org.au/
- 5 Latrobe Cemetery Working Bee** from 10:00am until 11:15am. BYO gardening implements and wear appropriate clothing. Food and drink at conclusion. ☎ 6426 4444
- 8 International Women's Day**
- 8 Library on the Lawn** at the Latrobe Post Office Reserve. Refer to separate article.
- 10 Neil Gibson** performs at Shearwater Resort, 17-23 Shearwater Blvd, Shearwater from 6:30 pm until 10:00 pm. Free entry.
- 10-19 10 Days on the Island.** Program available at www.tendays.org.au/
- 12 Devonport Anglers Club Junior Fishout Day** at Taylor's Dam, Bass Hwy, Latrobe from 10:00am until 3:00pm. For information, go to www.facebook.com/juniorfishingtasmania
- 13 Eight Hour Day Public Holiday**
- 14 Latrobe Council Meeting** at 170 Gilbert Street, Latrobe from 5:00pm. Attendance registration essential to 6426 4444.
- 17-22 Targa Tasmania -**
https://targa.com.au/targa-tasmania-tour/. No Moriarty stage.
- 18 Latrobe Speedway** at the Gulf Western and Independent Oils Speedway, Speedway Drive, Latrobe featuring AMCA, Dirt Karts, Formula 500s, Modifieds - (Tasmanian Title), Sprintcars, Juniors - Top Star, Street Stocks, Tassie Sixes. Gates open at 3:00pm. Admission fees apply
- 19 Delta Therapy Dog Walk** from the Port Sorell Fire Brigade, Rice Street, Port Sorell. Register from 10:30 am for 11:00 am departure. Refer to separate article.
- 20 Henley-on-Mersey Public Meeting** at Hamilton Hub, 18 Hamilton Street, Latrobe from 7:00 pm. All welcome.
- 23 Neighbour Day -**
https://neighbourseveryday.org/
- 24 Gypsy Rose** performs at Shearwater Resort, 17-23 Shearwater Blvd,

Shearwater from 7:00 pm until 10:30 pm. Tickets \$25 pp via Eventbrite.

- 25 Love It Music and Camping Festival.** Refer to separate article. Costs apply. ☎ 0456 007 421.
- 29 Governor's Visit**
- 31 Poison'Us - The Australian Poison Tribute Show and GN'R** performs at Shearwater Resort, 17-23 Shearwater Blvd, Shearwater from 7:00 pm until 10:30 pm. Tickets \$35 pp via TryBooking.

APRIL

- 1 Latrobe Speedway** at the Gulf Western and Independent Oils Speedway, Speedway Drive, Latrobe featuring AMCA, Dirt Karts, Formula 500s, Late Models, Street Stocks, Super Sedans. Gates open at 3:00pm. Admission fees apply
- 2 Turn Back Time - Daylight Saving Ends** turn back your clock by 1 hour.
- 6 Full Moon Gong Relaxation Session** at Hamilton Hub, 18 Hamilton Street, Latrobe from 7:00pm Cost: \$40pp. Bookings to 0466 650 797 or www.thequietcone.com.au/events
- 6-25 School Holidays**
- 7-10 Easter Public Holidays**



- 7 Good Friday Church Services**
- 9:30 am** Bridge of Hope in The Banksia Centre, Pitcairn St, Port Sorell
- 9:30 am** Sassafras Baptist Church - Cafe, 14 Chapel Road, Sassafras
- 10:00 am** Latrobe Baptist Church, 125 Gilbert Street, Latrobe
- 10:00 am** Stations of the Cross at St Joseph's Mass Centre, Wilson Street, Port Sorell
- 11:00 am** Stations of the Cross at St Patrick's Church, 195 Gilbert St, Latrobe
- 11:00 am** Bridge of Hope at St Luke's, Hamilton Street, Latrobe
- 9 Easter Sunday Church Services**
- 8:00 am** St Joseph's Mass Centre, Wilson Street, Port Sorell
- 9:30 am** Bridge of Hope at The Banksia Centre, Pitcairn St, Pt Sorell
- 10:00 am** Latrobe Baptist Church, 125 Gilbert Street, Latrobe
- 10:00 am** Wesley Vale Community Church, Port Sorell Main Road, Wesley Vale
- 10:30 am** Lighthouse Christian Fellowship, 16 Meredith St, Pt Sorell
- 10:30 am** Sassafras Baptist Church, 14 Chapel Road, Sassafras

11:00am Bridge of Hope at St George's, Hermitage Ln, Newground

4:00pm Bridge of Hope at St Luke's, Hamilton Street, Latrobe

5:00 pm St David's Independent Presbyterian Church, 7 Hamilton Street, Latrobe

5:00 pm St Patrick's Church, 195 Gilbert Street, Latrobe

- 9 Port Sorell Easter Picnic** at the Port Sorell Fire Station, Rice Street, Port Sorell from 10:00am until 2:00pm. Details at www.facebook.com/PortSorellFireBrigade

- 9 Devonport Anglers Club Season Final Junior Fishout Day** at Taylor's Dam, Bass Highway, Latrobe from 10:00am until 3:00pm. More info at www.facebook.com/juniorfishingtasmania

- 9 The Ringmasters** perform at Shearwater Resort, 17-23 Shearwater Blvd, Shearwater from 6:30 pm until 10:00 pm. Free entry.

- 12 Latrobe Council Meeting** at 170 Gilbert Street, Latrobe from 5:00pm. Attendance registration essential to 6426 4444.

- 23 North West Zone Dressage Competition** at 291 Squeaking Point Road, Thirlstane from 8:30am until 4:00pm. Free spectator entry. ☎ 0447 557 563

- 23 Music from the War Years Concert** by the Latrobe Federal Band in the Latrobe Memorial Hall commencing at 2:00 pm. Admission: \$10 pp at the door. ☎ 0408 262 187



25 ANZAC Day Services

- **Latrobe Dawn Service** at the Latrobe Cenotaph, 113 Gilbert Street, Latrobe. March steps off at 5:45am. Register at 0417 806 129 before Easter. Breakfast follows at Bellys Bar and Grill, 160 Gilbert Street, Latrobe - bookings essential 6426 3086.
- **Port Sorell Dawn Service** at the Port Sorell Defence Memorial, Pioneer Park, cnr Rice and Meredith Streets, Port Sorell, commencing at 6:00 am. ☎ 0407 852 946 Breakfast follows at Port Sorell Hall
- **Latrobe Citizens Commemorative Service** at the Latrobe Cenotaph, 113 Gilbert Street, Latrobe. March steps off at 9:40am. Register at 0417 806 129 before Easter. Wreath/book layers to register with Latrobe Council on 64264444 before Easter.

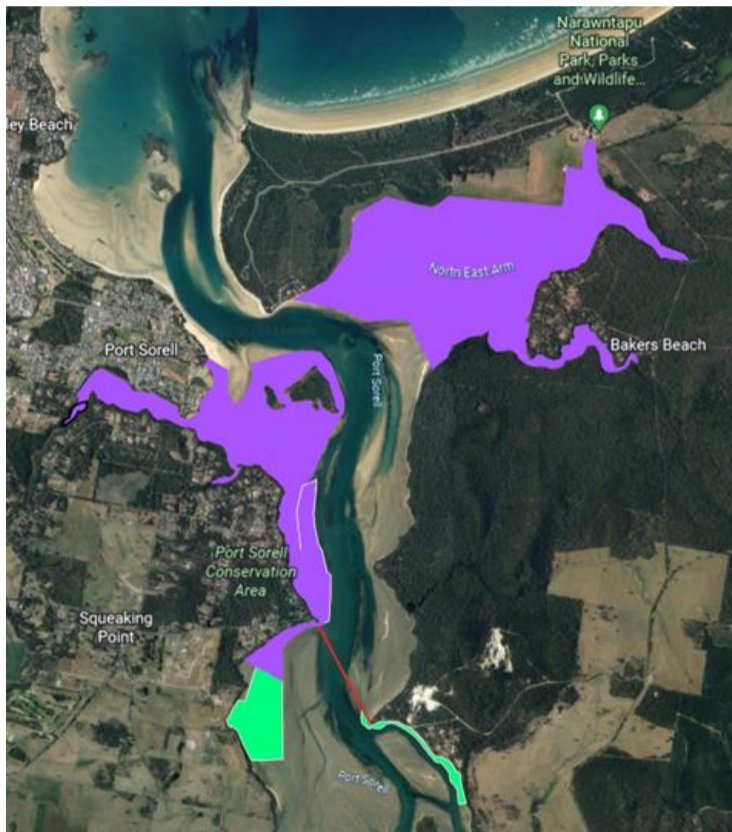
FLYING START TO RICE GRASS TREATMENT

Rice Grass is a highly invasive weed which was introduced into Tasmanian estuaries early last century. Once established, it spreads rapidly and out-competes native saltmarsh vegetation and seagrass beds, disturbing the natural ecosystems and threatening habitat for fish and birdlife. The plant can also limit boat access.

The Port Sorell-Rubicon Estuary has the second largest infestation of Rice Grass in the country and covers an area of more than 650 hectares, forming dense meadows in the upper reaches of the estuary.

The current project to tackle the Rice Grass infestation in the Rubicon is in its third year and is being managed by the Cradle Coast Authority in partnership with Latrobe Council, with funding from the Australian Government.

The 2023 Rice Grass spraying season has commenced with two teams of contractors aiming to cover a massive area of 590 hectares before the end of April, when the grass turns dormant for the winter.



This includes re-treating 577 hectares which has been targeted over the previous two years of the project, along with 36 hectares of a new treatment area south of the containment line. The area can be seen on the map with re-treatment areas marked in purple and new treatment areas marked in green.

Past spraying has been conducted on foot and from quad bikes, but this year Cradle Coast NRM is trialling aerially spraying the dense meadows near the Frankford Highway bridge. These meadows have previously been untreatable due to the soft sediment making it inaccessible.

Aerial treatment is being

conducted using specialised low flying drones, ensuring minimal disturbance to the environment.

The herbicide used for treating Rice Grass, Fusilade Forte, is highly effective with a 90% success rate. It has a low toxicity to fish and shellfish and does not affect seagrass. There is an advised seven day withholding period for the consumption of fish caught in the estuary post-spraying with signage at local boat ramps to advise of these dates.

Boat users and kayakers should also wash down boats and equipment after entering Rice Grass infested areas to assist in limiting the spread to other areas.

For more information on the current project, contact: Claire Jinnette, NRM Project Coordinator via cjinnette@cradlecoast.com

YOUR ELECTED REPRESENTATIVES

- Mayor Peter FRESHNEY0417 287 006
- D/Mayor Vonette MEAD.....0407 055 180
- Claudia BALDOCK.....0424 782 379
- Graeme BROWN0417 598 116
- Dave FIDLER0457 880 028
- Jacki MARTIN.....0409 435 825
- Sommer METSKE0409 622 710
- Garry SIMS 0419 139 053
- Gerrad WICKS.....0488 325 590

The postal address for all Councillors is P O Box 63, Latrobe, 7307

LOCAL BUILDING UPDATE

64 building, plumbing, and commercial applications and notifications of works were received by Council from November to December inclusive. They comprised of 24 dwellings; 3 dwelling additions/alterations; 5 outbuildings; 2 commercial/industrial; 25 plumbing applications and 5 other applications with a conservative value of \$26,943,730.

DISCLAIMER - Although all care has been taken to ensure that information contained in this newsletter is correct at the time of printing, Latrobe Council gives no warranty or assurance and makes no representation as to the accuracy or reliability of any information or advice contained in the newsletter, or that it is suitable for your intended use. The publication of articles supplied by external organisations does not imply any form of endorsement by the Latrobe Council.

KEEP IT CLEAR

Do you have a fire hydrant on or by your property? You can help fire services help you by ensuring that fire hydrants are visible and clear of vegetation.

In the event of a fire, it's important for everyone's safety that your nearest hydrant is accessible.



A helpful hint is that when you put your yellow recycle bin out each fortnight, check your yellow hydrant lid. If you notice a leak, please phone TasWater on 136 992.

Fire permit season remains current until further notice. For permit applications please phone 1800 000 699.

As daylight saving changes, please remember to check your smoke alarm batteries and have a fire response plan with those within your residence.

The Port Sorell Fire Brigade are excited to announce that their Junior and Cadet programs will recommence this Autumn. Information sessions are advertised via the brigade's Facebook page.

If you are interested in becoming a volunteer with the Port Sorell Fire Brigade, please contact them via the brigade's Facebook page - www.facebook.com/PortSorellFireBrigade.

FUTURE EDITIONS

Article and event deadlines and distribution dates are provided to assist contributors with their forward planning

Deadline	Edition
27 Mar (Mon)	May-Jun
1 Jun (Thurs)	Jul-Aug

Articles must be submitted to the editor by the relevant deadline via email to council@latrobe.tas.gov.au or posting to P O Box 63, Latrobe, 7307. Contributions must be relevant to the Latrobe Council area and suitable for inclusion. Submissions will be used at the discretion of the editor. Council does not pay for editorial submitted.