

Port Sorell Community, Recreation and Performing Arts Centre on Track

Extensive community input has been sought in the development of a Port Sorell Community, Recreation and Performing Arts Centre that meets community expectations and needs now whilst also providing opportunities into the future.

Fairbrother Pty Ltd have successfully tendered for the construction of the centre with work scheduled to commence mid-February (after "Jazz at the Port").

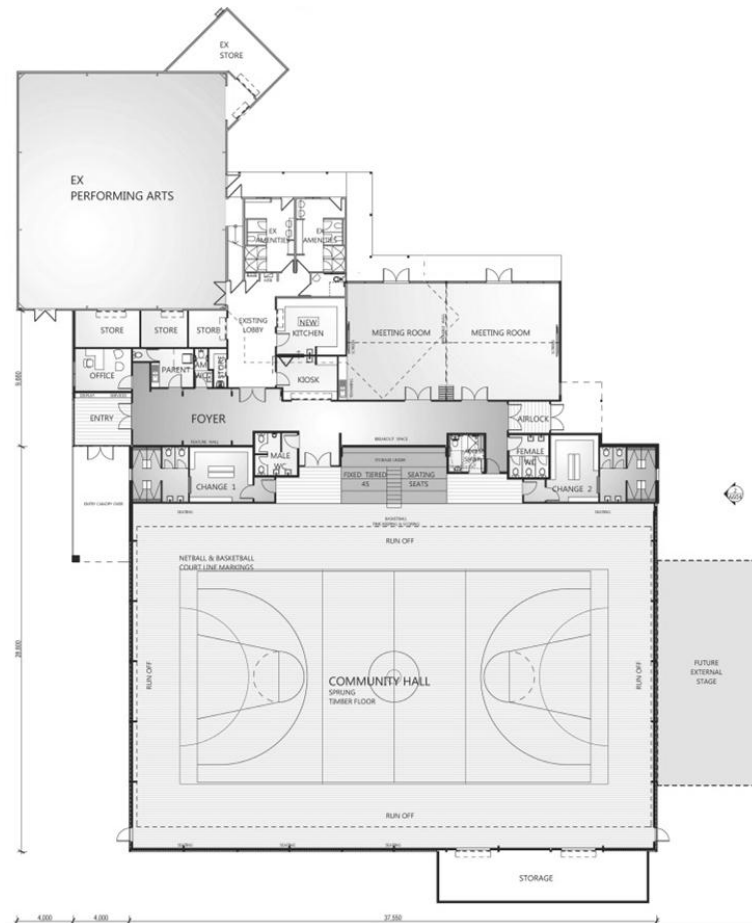
This significant facility for Port Sorell is the result of tripartite government funding and will significantly enhance the existing facility on Camp Banksia land.

While the construction of the facility is much anticipated, the day to day processes of how it will all work when built are of equal priority.

Council has therefore established a Special Committee who are tasked with determining the mechanisms for the Centre's management, its procedures and policies to ensure an efficient and effective facility. That Special Committee consists of -

- Committee Chair, Cr Garry Sims, Latrobe Council with Cr. Lesley Young as proxy
- Ronald Viney - Manager Planning and Development, Latrobe Council
- the Camp Manager of Camp Banksia Controlling Authority
- Jarod Newitt representing the Port Sorell Advisory Committee
- Samantha Abblitt of the Port Sorell Primary School with Mandy Lillico as proxy
- Graeme Coffin representing the Rubicon Senior Citizen's Club

The Steering Committee will cease operation when the new Centre opens (end of 2014) and be replaced by a Management Committee which may or may not include the representatives of this Steering Committee.



Reviewing Councillor Numbers

Bryan Green MP, Minister for Local Government, wrote to all Tasmanian Councils recently offering an opportunity to participate in a proposed 2014 review of Councillor numbers.

Latrobe Council discussed this issue and considered that nine elected members was optimal for the Latrobe Municipality; therefore choosing not to participate in the voluntary reviews.

Thirteen Councils have participated previously in the first two reviews. As a result of those reviews, reductions were recommended at eight Councils and Councillor numbers were recommended to remain unchanged at five Councils (previous reports can be viewed at www.dpac.tas.gov.au)

Reviews will commence in January 2014 and are expected to conclude by July 2014.

At the scheduled October Local Government elections, all Councillor positions will be vacated resulting in

an "all in, all out" position. Previously, half of the Councillors seats only were scheduled for re-election bi-annually elections.

Building Applications

A total of 18 building applications were submitted to Council for approval during November. The conservative construction cost for these applications is \$2,032,100.

This compares with the same number as October however those applications had a conservative construction cost of \$4,674,100.

Better Health¹

Summer eating can be enjoyable with fresh seasonal produce, outdoor eating and entertaining for special occasions or family gatherings. Unfortunately, food poisoning is more common in summer than at any other time of year simply because bacteria in food multiply faster in hot, humid weather.

Most home kitchens aren't designed for the safe handling of large quantities of food. Preparing and eating food outdoors - in the garden, when camping or at picnics and barbecues - can also be difficult, where refrigeration and places to wash hands are not readily available.

Food poisoning can cause vomiting and diarrhea and may be quite serious for children, older people and people with conditions that weaken their immune systems.

To prevent food poisoning from spoiling your summer fun, here are some simple steps to keep food fresh and safe -

1. **Set your thermostat.** Make sure the fridge temperature is below 5°C and keep your freezer at minus 15 °C to minus 18 °C. Stock your cooler well with ice packs or clean ice. Keep salads fresh and meat safe in the cooler or fridge at 5 °C or less until cooking or serving.
2. **Get food home quickly.** Take chilled, frozen or hot food straight home in insulated containers.
3. **Keep hot food hot.** If you don't want to cool food straight away, keep hot food at 60 °C or hotter. Reheat foods thoroughly so they're steaming (above 75 °C) or boiling.
4. **Don't leave hot foods to completely cool before refrigerating.** Put hot food in the fridge or freezer as soon as the steam stops rising. Cool it rapidly first by dipping the container in ice or a cold-water bath. Divide food into smaller, shallower containers so it cools more quickly in the fridge.
5. **Keep raw meat, chicken and seafood chilled and away from cooked food.** When bacteria from raw meat gets onto cooked food, this can cause food poisoning. Keep raw meat below other foods in the fridge and don't let raw

meat juices drip onto other food. Use different chopping boards for raw and cooked food, or wash them between uses. Wash your hands thoroughly after touching raw meat.

6. **Thaw frozen food thoroughly.** Unless food is manufactured to be cooked from frozen (check pack instructions), make sure it's thawed right through before cooking.
7. **Don't overfill your fridge.** Having enough room for air circulation inside the fridge is important for effective cooling. A good tip if you're catering for a crowd is to keep drinks on ice or in an insulated cooler and reserve the space in your fridge for food.
8. **Store leftovers safely.** Store any leftovers in the fridge and eat within three to five days. If you don't plan to eat them within this time, freeze them straight away.
9. **Know when to throw away.** Don't eat food that's been left out of the fridge for more than four hours - especially poultry, meat, seafood, cooked rice and cooked pasta.
10. **Avoid handling food when you're not feeling well.** If you have diarrhea, vomiting, sore throat with fever, fever or jaundice, or infectious skin conditions, avoid handling food and see a doctor if symptoms persist.

Bus Turning Facility at Hospital

Council has partnered with the Mersey Community Hospital to improve the safety of motorists and pedestrians by establishing an area in which the Merseylink bus service can safely turn at the hospital.

The result is that the hospital has approved the use of its carpark on the western side of Torquay Road for the buses to manoeuvre with Council funding the installation of wheel stops, line marking and flexible bollards to clearly define the turning space.

Council believes that the resulting partnership with the hospital is the best possible outcome for visitors using public transport to access the hospital as well as other users of the carpark facility.

Discovery Ranger Program

The Tasmania Parks and Wildlife Service's Discovery Ranger Program is on again this summer with some fantastic FREE activities in 16 different locations around the state for all ages to enjoy.

Join the friendly and knowledgeable discovery rangers for entertaining kid's games, enchanted walks, striking presentations, wild about wildlife activities and much more, and learn more about Tassie's incredible natural and cultural heritage.

Discovery Ranger John Bowden will be running his famous activities in Narawntapu National Park, Port Sorell as well as in Devonport, Ulverstone and Greens Beach until Saturday 8 February 2014.



John Bowden enlightens former participants on native wildlife.

Every Friday evening from 8.00 pm - 9.30 pm during this period, join him on his 'Sunset Stroll' as the light fades and Narawntapu's native animals come out to play.

Discovery Rangers will also be located at Lillico Beach Conservation Area, the north-west reserves, Cradle Mountain and the Arthur-Pieman Conservation Area.

For up-to-date information on activities near you, please check your local park or reserve noticeboard, community noticeboard, or see the Feature Story on the Parks and Wildlife Service website at www.parks.tas.gov.au. For further information, please call Sam Cuff on 0400 968 570.

Get out this summer and share the wonder in your parks and reserves.

Development at Bells Parade

Council recently purchased and is installing a new nine (9) metre flag pole at Settlers Wharf, Bells Parade. Council has also committed \$19,500 for the Latrobe Walking Tracks Project. This project involves -

- Developing a printed and online brochure to highlight the short

¹ http://www.betterhealth.vic.gov.au/bhcv2/bhcarticles.nsf/pages/10_tips_for_summer_food_safety

walking experiences in and around Latrobe;

- Improving directional and interpretive signage at these tracks; and
- Undertaking track works where required.

The project had been developed to near implementation stage however a budget shortfall of approx. \$10,000, relating to access from the Bells Parade Precinct to the Dooleys Hill walking track across River Road, was identified.

Council has now redirected funding to enable the completion of the project, which includes the Dooleys Hill walking track network; Pig Island; Warrawee and Big Bend river walk; Sheean Walk; Latrobe Town Historical walk and the Henry Somerset Reserve.

Corporate Climate Change Adaptation Plan

There is an expansive and growing body of scientific evidence that the global climate is changing and that extreme weather events and sea level rises will increase in the 21st century.

In Australia, it is recognised by all tiers of government that it is appropriate and effective to manage climate change at a 'local' scale and that local government are key in adapting to the local impact of same.

In recognition of this, Latrobe Council has determined specific outputs from a modelled climate scenario for the municipality. Future rainfall patterns, extreme events and bushfire likelihood have been presented at 'risk management' and 'adaptation action' workshops with staff which has resulted in the development of a Latrobe Council Climate Change Adaptation Plan.

A copy of the plan is available on Latrobe Council's website and is currently being utilised as a reference document and will be specifically identified in Council's next Strategic Plan.

Rethink Waste Management

Tasmania's three waste management groups have launched a website to assist the Tasmanian community in thinking differently about our waste. www.rethinkwaste.com.au is a collaborative state-wide initiative of the Cradle Coast Waste Management Group, the Northern Tasmanian Waste Management Group and the Southern Waste Strategy Authority that

encourages Tasmanians to rethink what we do with our waste at home, at school, in the workplace and when out and about so we continue to improve our environment, save energy, and reduce the burden on landfill.

Reducing the level of household waste is an easy exercise in rethinking old habits and watching what goes in our bins. Rethinkwaste.com.au can show you how to get started and keep you going with great tips and ideas throughout the year.

By rethinking what we do, we can make a real reduction to the amount of waste we throw out. It's not hard and every little bit helps.

Visit www.rethinkwaste.com.au for more information.



The Department of Health and Human Services (DHHS) Population Health along with the Family Violence Counselling and Support Service (FVCSS) recently partnered with Latrobe Council to initiate a pilot project in social marketing to raise awareness of violence against women.

The project involved Council distributing 'bin stickers' with a covering letter to service groups, schools, businesses, sporting and community groups and installing the stickers on bins in Council's own workplace offices and venues throughout the municipality.

If such a simple action positively influences women's health and wellbeing and encourages others to come on board then it has been beneficial.

Preparing for the Fire Season

"With the fire danger season upon us, home and land owners should ensure that each household and property has a fire management plan. Importantly, all family members must be aware of the plan and the role that each needs to play. Whilst some homes are obviously more susceptible to the threat of fire, all households can be prepared for fire to minimise the impact and to keep people and property safe," said Mayor Mike Gaffney.

He further added that "as a Council, the role we play to achieve a balance between fire safety and protecting environmental values is not always

easy and I would encourage land and home owners to be prepared, sooner rather than later."

Under the Latrobe Interim Planning Scheme 2013 the clearing of native vegetation requires application to Council for a planning permit.

The Planning Scheme also requires new dwellings or additions to dwellings in bushfire prone areas to have a bushfire hazard management plan. The Tasmanian Fire Services are able to provide a list of accredited persons able to assess and prepare bushfire management plans for landowners.

Mayor Gaffney continued by saying that "at times Councils do have to issue fire abatement notices to blocks or land parcels that need some attention. In many cases land owners are generally unaware of the regulations. Regular municipal inspections are conducted by staff and suspect land parcels are often brought to our attention by community residents.

If the block is assessed as a fire hazard, an abatement notice is sent to the property owner who has 14 days to abate the nuisance. If not completed in that time, Council may do the works and charge the property owner.

Bush block owners should also create a 3 metre fire break where the property adjoins residential blocks."

While burning off is an inexpensive and seemingly easy way of removing the accumulated fire hazard, there is a legal obligation for the property owner to maintain the fire only on their own property, and to obey any fire restrictions in force from the Tasmanian Fire Service. Please also consider your neighbours and ensure the fire is not creating smoke. If in doubt please contact your local fire brigade for further information or advice.

Growth at Chocolate Factory

In an endeavour to address customer needs, Council recently approved the subdivision and consolidation of 1.1ha of land at the House of Anvers chocolate factory to provide for an additional 56 car parking spaces and six motorhome spaces.

The additional parking is located at the rear of the property and will be accessed through the existing public car park. It will be appropriately landscaped to complement the existing grounds.

This comes amidst accolades to the House of Anvers for receiving a Bronze Award in the Tourist Attractions section of the 2013 Tasmanian Tourism Awards recently.

Encountering Snakes

Snakes can be seen not only in bush land but along walking tracks, in towns and industrial areas and are particularly active at this time of the year.

If you see a snake, the best thing to do is to stand very still and let it go on its way or, if safe to do so, back away from it very slowly.

Generally it will only be passing through but you need to be mindful that **ALL** snakes in Tasmania are venomous. They don't however generally attack unless provoked.



Copperhead Snake

To minimise a snake taking up residency around your home, keep your lawns mown; minimise rubbish and garden waste; stack wood away from the house; and don't have standing water in bowls or ponds close to the house.

If you do find a snake at home, stay calm, do not approach the snake but keep it under constant observation (only if safe to do so) and ring for help.

Snake relocation services to the Latrobe Municipality are provided by:

- Central North Wildlife Care and Rescue - 0409 978 064
- All About Reptiles - 0418 170 952
- Max Smith - 0419 343 962

(NB. Snake relocations may incur a fee)

While snakebites are rare, if you are bitten, it is important that immediate first aid is given and professional assistance sought.

You do not need to identify the snake as the same anti-venom is used for all snakes in Tasmania, so concentrate on the person bitten.

- Stay calm and check that the snake is still not nearby.
- Lie the victim down and do not permit them to move.

- Don't wash or cut the bitten area. Most of the venom is likely to be on the surface of the skin. Cutting or washing may allow more venom to enter the wound.
- Immediately apply a firm pressure bandage from the bite site all the way down the limb to the fingers or toes, and back up to cover the entire limb. The bandage should be firm but not tight - you should be able to feel a pulse beyond the bandaged area.
- Phone 000 for emergency assistance (or 112 if using a mobile phone). When on the phone, listen to the questions being asked and give accurate information.

Youth Unemployment Crisis

Mission Australia has released the results of the biggest annual poll of young people in Australia. Results are broken down by each State and Territory as well as by gender.

Young Tasmanians revealed that they are more concerned about employment and their chances of getting a job in their local community than anywhere else in Australia.

The 2013 Youth Survey found that over half of Tasmania's young people fear there simply won't be sufficient employment opportunities in their local community when they finish school. When it comes to pursuing a career in their preferred industry, less than 40% think it will be possible in the area they live.

When asked to rank the top issues of national importance, *employment* - ranked eleventh by Tasmanian youth in 2012 - leapt into the top three national issues in this year's survey.

Some of the other issues identified from Tasmania include:

- More than one third of Tasmanians aged 15-19 are currently looking for work (including part-time/casual);
- Almost 65 per cent of Tasmanian females plan to go to university, compared with 50 per cent of males;
- The internet is the number one source of information for young people in Tasmania, with almost 1 in 5 young people spending at least 20 hours a week on social networking sites;
- Over 1 in 5 young people indicated they were either extremely or very concerned about depression and family conflict.

To get an overview of the issues for young people in Tasmania and the rest of Australia, go to www.missionaustralia.com.au/newsroom-page/media-releases/item/456-young-australian-s-worried-about-job-prospects-after-school

Connecting Healthcare

Technology is a part of daily life for most Australians. We use it for banking, shopping and connecting with family and friends.

It can also help deliver better healthcare by building a safer and more efficient health system for Australia. That's why the Australian Government has developed a personally controlled electronic health (eHealth) record system that puts you at the centre of your healthcare. The ability to personally control your eHealth record and for you and your healthcare providers to securely access your health information are central to the system. The *Personally Controlled Electronic Health Records Act 2012* provides the legal framework for the operation of the eHealth record system.

What is an eHealth record?

An eHealth record is a secure electronic summary of your health information.

Having an eHealth record means you, and any doctors or other healthcare professionals involved in your care can, subject to your access controls, quickly access a summary of your important health information, helping them to make better, safer decisions about your care.

Registering for an eHealth record is voluntary. Whether you choose to register has no effect on your entitlement to medical treatment or Medicare benefits.²

To find out more, collect an information book from your doctor, phone 1300 361 457 or go to www.ehealth.gov.au.

Hospital Entrance and Parking Changes

Patients and visitors to the Mersey Community Hospital are advised the main entrance road and 'rose garden' car park will close temporarily in January to allow for the road to be re-sealed.

The hospital entrance road will close to all traffic on Friday 10 January (subject to weather conditions). The

² eHealth Registration Booklet

circular 'rose garden' car park which spans from the main entrance road will be closed on both 9 and 10 January. These areas will remain open to pedestrians.

During this time, the Emergency Department entrance will be used as a temporary drop off point for patients. Disabled parking will be available next to the Emergency Department, and also in the car park situated at the front of the Nurses Home building.

Visitors should park either on Torquay Road, in one of the car parks adjacent to Torquay Road, or in the car park adjacent to the Nurses Home building.

Compliant Wireless Microphones

The Federal Government through the Australian Communications and Media Authority (ACMA) is raising awareness on initiatives to limit the national radio frequency spectrum to enable certain frequencies to be dedicated to 4G mobile broadband use as at 1 February 2015.

This will specifically affect wireless microphone users of the 694-820 megahertz (MHz) frequency range.

To ensure that all community groups and businesses understand the change and know what they should do to prepare, the ACMA is strongly encouraging users of wireless microphone systems to check their equipment and to start planning for the change now, ensuring compliance by 1 January, 2015.

The ACMA have a range of resources to make this process easy and are contactable by phoning 02 6219 5442 or going online to <http://www.acma.gov.au/>.

Fishcare Volunteers Hooked³

The Wild Fisheries Management Branch recently conducted training for Fishcare Tasmania volunteers on the banks of the Port Sorell Estuary.

Thirty-five new and existing Fishcare volunteers were led through practical exercises on communication essentials including helping fishers to find out where to find information on the fishing rules that apply to Tasmania's recreational sea fisheries.

Guest speakers, commercial fisher Stuart Richey, and Wild Fisheries Manager, Grant Pullen, provided excellent information about Australian salmon whilst local Fishcare

volunteers, who know and fish the Port Sorell estuary, gave presentations on the need to protect this highly productive and sheltered region that is home to an amazing variety of species of flora and fauna.

The volunteers discussed the rules that apply to beach seining and the importance of Shark Refuge Areas - of which Port Sorell is one. Then, combining theory with practical, they tackled Tassie's estuaries right at the water's edge and got their hands wet by having a cast and even dragging a beach seine.

Thanks go out to the wonderful Parks and Wildlife staff at the Interpretive Centre at Narawntapu National Park for providing such a picturesque venue for the training.

Tasting Trail App Launched

The Cradle to Coast Tasting Trail has joined the mobile app era, making it even easier to find the best food and beverages North West Tasmania has on offer.



The Cradle to Coast Tasting Trail has grown to include 32 food sector businesses, including vineyards, berry and cherry growers, whisky, chocolate and cheese makers, cafes and restaurants.

Users of the Cradle to Coast Tasting Trail app have the option to view the trail as business listings or as an online map that automatically updates when travelling through the region.

Other features also make the most of the mobile device's location-based capability such as dynamic directions, notifications when near a Tasting Trail business, real-time status of business opening hours, and links to telephone or visit a business website.

The Cradle to Coast Tasting Trail app is available as a free download for Android devices from Google Play or from Apple's App Store.

A Winning Year for Ghost Rock Vineyard

Ghost Rock has continued on its medal winning way during the last months of 2013 in receiving a Trophy for their 2012 Pinot Noir at the International Cool Climate Wine Show in Mornington Victoria and, earlier in the year, their Oulton Block 2013 Riesling won a Gold Medal at the Royal Melbourne Wine Show, a highly esteemed show. Their

Sauvignon Blanc 2013 received a Gold Medal at the Australian Small Winemakers Show where the Ol Man's Ghost Pinot Gris 2013 also won a Silver Medal.

At the Hobart Wine Show in November their 2013 Oulton Riesling was again awarded Gold and their Pinot Gris Silver, plus all other wines gained Bronze which meant that all wines entered received medals!

To round the year off, Ghost Rock Vineyard were awarded the 2013 Tasmanian Tourism Awards for Best Tourism Winery and will represent Tasmania in the National Tourism Awards in Sydney in February.

Mersey-Forth Water Management Review

Hydro Tasmania's formal review of its land and water management practices in the Mersey-Forth catchments has concluded with stakeholders recently presented with the study outcomes, key achievements and ongoing commitments to improve the management of water and land management activities in the Mersey-Forth catchments.

At the presentation, Hydro Tasmania expressed its appreciation to all stakeholders who participated in this review and acknowledged the resulting communication channels and collaboration opportunities that had resulted.

Hydro Tasmania CEO Steve Davy stated that "even though the review was now completed, Hydro Tasmania will be in the catchments for the long term and our doors are always open to hear of any issues that might arise."

The studies, factsheets, reports and newsletters from the Mersey-Forth Water Management Review are available on Hydro Tasmania's website;

www.hydro.com.au/MFWMR. Hardcopies of the documents can be provided on request by contacting Alison Howman (03 6230 5254), Simon Gartenstein (03 6230 5401) or emailing merseyforth@hydro.com.au.

Clean Up Australia Day

Clean Up Australia Day is being held on Sunday, March 2 and is a simple way you can take action to clean up, fix up and conserve your environment.

In 2013 an estimated 550,300 volunteers removed 16,150 tonnes of rubbish at 7,341 sites across Australia!

To lend a hand on Sunday 2 March and help clean up your own

³ Cradle to Coastlines Spring Edition

neighbourhood simply register your clean up site or volunteer at a site near you.

If you wish to clean up public land, contact the land manager and seek permission to do so before you register the site.

If you would like to clean up an area but are unable to do so on the official Clean Up Australia Day, you may register your site on any day of the year as a part of Clean Up Australia Every Day.

Registering with Clean Up Australia provides you with information and material support from Clean Up Australia - absolutely free

To be involved, go to www.cleanupaustrialiaday.org.au.

Fundraising Initiatives



This month Latrobe Rotarians will be busy preparing for Henley-on-Mersey, the Municipality's major Australia Day

celebration, which we hope will be bigger and better than ever.

Funds raised through sizzling sausages outside Coles have totaled over \$1,200 with the money from these projects forwarded to the NSW Bush Fire Appeal and Philippine typhoon. If you see Rotarians there, please stop and buy a sausage.

A colourful 2014 Latrobe Rotary calendar is available in stores around Latrobe and Port Sorell at a cost of only \$6.00. All profits from this project are guaranteed to support worthy causes in the municipality.

The 2014 Rotary Club of Latrobe Wedding Expo will be held in the Latrobe Memorial Hall on Sunday, April 6 from 10.00 am to 3.30 pm. If you think you have something that may be of interest to those planning a wedding and wish to participate in the 2014 Latrobe Rotary Wedding expo, please contact Tim or Tania either by e-mailing weddingexpo@rotarycluboflatrobe.org.au, via Facebook or ring 0427 558 516 or 0437 070 178.

Rotary meets every Wednesday at the Axeman's Hall of Fame, Bells Parade, Latrobe from 6.00 pm for fellowship and to hear from guest speakers. If you are interested in being invited to be part of this dynamic team, please contact any member of the Rotary Club, President Mike McLoughlin (6492 3034) or Secretary John

Blackwell (6426 2613) or visit www.rotarycluboflatrobe.org.au.

A peaceful walk in the Aubrey Luck Reserve

Looking for a peaceful, shady walk this summer, then why not visit the Aubrey Luck Reserve at Hawley.

Wander along the bush paths and sit on the stone seat, listening to the birds. The reserve has entrances off Joyce Street, Taroon Street and Dumbleton Street. The Taroon Street entrance has recently been redesigned and is well worth a visit.



Seating in the Aub Luck Reserve

Members of Rubicon Coast and Landcare look after this reserve on behalf of the Latrobe Council.

They have working bees to free the area of exotic weeds, such as blackberry and agapanthus, and to plant attractive local native plants in their place.

Rubicon Coast and Landcare welcomes new members. If you would like to join the group, contact Anna at rubicon_inc@hotmail.com

Tourism Potential



Les Tomich and Peter Button, on behalf of the Latrobe and Port Sorell Tourism Association (LaPSTA), recently attended a deputation with Ministers David O'Byrne and Scott Bacon to present LaPSTA's concerns regarding the Spirit of Tasmania service and the resultant impact on tourism in our area.

They had a good meeting where it was made clear by the Ministers that the Spirit operation was now in profit, and that any profits were being retained by TT-Line to service and eventually replace the Spirit ships.

It was also stated that the State Government is also seriously considering whether to put in service two smaller vessels for passengers as well as two freight ships. Further news will come out about this shortly.

The Ministers did indicate that they would request the Chair and CEO of TT-Line to meet with the Cradle Coast Authority and LaPSTA to discuss ways in which collaboration could encourage more tourists locally.

Mr Button is able to be contacted at peter@tranquilles.com or go to www.lapsta.com.au.

Chocolate Winterfest Named a Finalist

Chocolate Winterfest, Latrobe was announced as a finalist in the prestigious Prime Super Events and Tourism Award at the 2013 Community Achievement Awards recently.

Although the event didn't win the Award, the honour of being selected as a finalist from a very strong field of nominees enabled further promotion of *Chocolate Winterfest, Latrobe* to the many guests at the presentation.



Mayor Gaffney receives the finalist certificate for Chocolate Winterfest, Latrobe from Stephen Pratt, General Manager - Operations, Prime Super.

Latrobe Men's Shed

The Latrobe Men's Shed was officially opened in November and is located at the rear of the Latrobe Baptist Church with parking via Kings Lane.

Open to any male throughout Latrobe and beyond, the Latrobe Men's Shed provides many opportunities to develop a variety of skills; to get away from the other half for a few hours or catch up with friends (or make new friends).

If you would like to volunteer as a tutor at the Latrobe Men's Shed; donate good quality equipment or have a community project in which members can be involved, please contact either Peter Creeley (6426 1674) or Ralph Terry (6427 0006).

Latrobe Art and Photographic Exhibition

Time is running out for entry in this year's Latrobe Art and Photographic Exhibition with the deadline for entries being Friday, 10th January.

This year entrants are encouraged to submit their interpretation of *An Island Revealed*.

The photographic competition is for digital entries that must be uploaded no later than 10 January.

There section for art requires the entry form only to be submitted by 10 January and the framed artwork/s to be delivered to the exhibition venue on Sunday, 19 January between 3.30 pm and 4.00 pm.

All these entry conditions are fully detailed on Latrobe Council's website. If any clarification is required, please contact Michelle on 0400 578 746.

The exhibition will be on public display from 21-26 January.

Summer Fun

Looking for something to keep the kids occupied this Summer. Help is at hand with a variety of child care services.

Within Latrobe, Shamrock Vacation Care in Bradshaw Street, Latrobe has planned an exciting program for young people aged from 5-12 years.

Details are available by phoning them on 6426 3048 or download the program from Latrobe Council's website.

Additionally, there are a number of child care centres in Devonport that service the Latrobe Municipality.

Full details on these and what they offer (as some cater for older children aged 10-14) is available at <http://www.echildcare.com.au>.

Autumn Fiesta

Early planning is under way by members of the Bridge of Hope Anglican Church, Port Sorell to hold an Autumn Fiesta in its church grounds on the day of the State Government elections, which are likely to be held in March.

A day of activities is planned including morning tea, cake stall, plant stall, garage sale, entertainment and activities for the children.

It has been a busy time for the Church with its many programs in addition to its regular 9.00 am Sunday services.

A highlight of the past six months has been the success of the Mainly Music

group which has attracted a number of preschool aged children and their parents.

The Church distributed free pancakes at the Port Sorell Christmas Carols in December and will also hold a pancake day on Shrove Tuesday (March 4).



Foster Carers Wanted

RSPCA Tasmania needs some animal lovers to help take care of young kittens prior to them going to a new home. Fostering is an important part of the work done by RSPCA volunteers, a fulfilling and rewarding experience, giving kittens a good start to life.

What you need:

- A secure indoor space with a vinyl/timber floor to house the kittens.
- Time to spend cuddling the furry fellows and the ability to come out to the Animal Care Centre every 2 weeks for a health check.
- Current vaccination certificates for your own Feline.

The RSPCA will provide food, litter, support, wormer and all items necessary for the kittens to grow up into healthy cats.

For more information, please contact the RSPCA on 6427 2566 for an application form.

Port Sorell Canine Community Walk

The Delta Therapy Dog Program involves a group of dedicated volunteers and their Accredited Dogs visiting North West Coast Aged Care facility residents and adults with disabilities.

"The rush to greet the Delta Dog on arrival at Rubicon Grove is amazing and puts a smile on everyone's face."

Maree Febey - Rubicon Grove

To support this great program, Delta Therapy Dogs are hosting a Canine Community Walk at Port Sorell on Sunday, 23 March and would love you, with friends and family, and, of course, your dog to join them again.

There is a choice of either a 2 km or 4.5 km walk.

Registration commences at 10.30 am at the Port Sorell Fire Station with an 11.00 am start. The cost is \$5 per family or \$3 an individual. Every registration has a chance to win a prize.

On return to Pioneer Park, indulge in a perfectly cooked sausage from the Port Sorell Fire Brigade or take your dog through the agility course. Goodies will also be for sale for both two and four legged friends.

For more information, contact Claire on 6424 8948 or just turn up on the day.

Sk8 Point Central, Latrobe

Meadcon was the successful contractor for the Sk8 Point Central skatepark in Latrobe and is progressing steadily on same. It is anticipated that the facility will be available for use from February.

An official opening will be held simultaneously with a Know Your Odds Skate, Scooter and BMX Competition on April 5, during National Youth Week. Stay tuned for more information about that.

The construction of Sk8 Point Central has been funded by Latrobe Council and the Tasmanian Community Fund and includes a skatepark and basketball area alongside a shaded, passive recreation area inclusive of BBQ facilities.

Designs can be viewed on Council's website.

Craft and Chat Session

Chat 'n Choose, an inter-denominational craft morning where people of all ages get together and learn new skills or brush up on old ones, is holding registrations at the Latrobe Baptist Church Hall on Wednesday, 5th February.

Classes are held each Wednesday during school terms from 10.00 am until 12 noon. With 15 craft activities offered throughout Term 1, there's bound to be something to interest males and females. No crèche is available.

If you are new to the district, bored, lonely or just need some "me" time, this is a great opportunity to make new friends and create lovely presents for yourself, family and friends.

The cost is \$2 per session and includes morning tea.

For further information, please contact Glenis Smith on 6426 1220 or Fay Horne on 6426 1740.

Busyness Continues



Christmas events, including Carols and internal social activities, all took place with their usual precision, thanks to the dedication and skill of organisers.

The Lions Club of Port Sorell are now busily into *Jazz at the Port* which is to be staged at Camp Banksia from 1.00 pm until 5.00 pm on February 2. The main attractions this year will be The Grand Central Big Band, Jacob Boote and Laura Mead as well as The Deloraine Big Band with guest appearance by Molly Vrantis.

Once again, this is a BYO event so bring along a chair, blanket and refreshments. Some shade will be provided but an umbrella would be advisable. Ghost Rock Vineyard and Spreyton Cider will have stalls and tea and coffee will be available. Gates open at 11.30 am and entry will be \$10 per person. For further information please contact Kris Crawford on 6428 7926.

The club's annual fund raising drive for Relay for Life is well under way with a book sale taking place at the Port Sorell Memorial Hall on Saturday, January 11. Those who wish to donate books to this very worthy cause may call Lions Rod Bramich 0407 852 946 or Chris Smith 6428 6149 to arrange delivery or collection.

If you would like to become a member of the Lions Club of Port Sorell, contact Lion Rosemary Rabbetts on 6428 7389.

Train Make Over



Members of Rubicon River Arts have been busy in recent times giving Latrobe Council's kiosk caravan a paint over.

"With many of our members from the Port Sorell area involved in this project, the support of the Port Sorell Men's Shed to allow the caravan to be securely sited in their yard has been extremely convenient," said Mrs McDermott, Secretary of Rubicon River Arts.

Previously painted as a green steam train, the caravan has been sandblasted to remove some developing rust and has had a change of colour to red, which will make the kiosk caravan more visual in the predominantly



Wendy Thiele and Angela McDermott had at work on painting the caravan.

green environments in which it is used.

The continuation of the train theme reinforces the town of Latrobe's strong steam heritage. New members are always welcome to delve into the world of art and share your skills with others. For more

information, phone Angela on 6424 3463 or 0419 490 042.

Changing of the Guard



Port Sorell Neighbourhood Watch held its Annual General Meeting in October with some new faces taking on roles within the Watch.

David Marriott was elected as the Area Coordinator, ably supported by Jeanette Thompson in the role of Secretary. Frank Stolp accepted the role of Treasurer with Sue Moylan heading up the newsletter team of Kate Birch, Genevieve Kennett and Jack Nicholls.

Port Sorell Neighbourhood Watch is now on Facebook thanks to Jess Hodder and Kate Birch.

Port Sorell Neighbourhood Watch meetings are held at 7.00 pm in the Port Sorell Memorial Hall on the last Tuesday of the month, from February to November.

Playful Penguins Playgroup Resumes

Port Sorell 'Playful Penguins' Playgroup will recommence on February 14, aligning to the school terms.

The Playgroup takes place every Tuesday at the Port Sorell Memorial Hall, Meredith Street, Latrobe from 10.00 am to 12 noon. Cost is just \$3 per family which includes tea and coffee.



Catering for children and carers of babies to preschoolers, the group has a range of activities, indoor and

outdoor, with the aim of nurturing imagination, motor skills and cooperation.

Playgroup will also be in receipt of their brand new 'appliances' built by the Men's Shed for their 'home corner' and have a focus on technology with the new tablets loaded up with educational Apps. These items were purchased with a very generous Community Grant received from the Latrobe Council.

For more information about the Playful Penguins Playgroup, please contact either Sophie (0447 082 439) or Kate (0408 325 429) or visit the Facebook page "Port Sorell Community Playgroup".

Calm Before the Storm



Members of the Lions Club of Latrobe will be taking a brief but well-earned break during the first week of January before

jumping back into an extremely busy schedule with two double header speedway meetings and Henley-on-Mersey.

On March 3 the Youth of the Year Club Final will be held. Young persons aged from 16-under 19 years of age as at June 30th, of the year of the national final, are eligible to enter Lions Youth of the Year. This is a prestigious event for young people, having been in existence for more than 46 years and boasts many high profile Australians amongst the ranks of former entrants. Youth will have an unequalled opportunity to experience an interview situation - in a friendly atmosphere - and a chance to practice public speaking skills.

Our regular collection of used stamps and spectacles will continue as usual and are gratefully accepted.

Should you wish to know more about the Lions Club of Latrobe please feel free to contact President Peter Burk at Morse's Butchery, Lion Stuart Ritchie, Lion Kae Campbell 64261442 or any Lions Member.

History on Show

The Tasmanian Family History Society, Mersey Branch will be having a display of Latrobe books and information at "Sherwood Hall", Bells Parade, Latrobe on Australia Day (January 26). This will include books recently donated by members and families which has expanded the group's collection.

The group is also seeking more photographs of service personnel to include in their 100 year commemoration of World War 1. These are for inclusion in displays for ANZAC Day and Remembrance Day in 2014.

Members look forward to meeting you and enlightening you on the rich history of the Mersey region.

Mainly Music resumes weekly at Port Sorell

Following a successful start in July last year, Mainly Music sessions will resume on February 12 at the church hall in Rice Street, Port Sorell.

Mainly Music is a fun, inter-active music and play time for pre-school aged children along with a parent or care-giver. All families are welcome with the weekly session costing \$3 per family, which includes morning tea.

Mainly Music is conducted by a team of volunteers from the Bridge of Hope Anglican Church and was assisted by a Latrobe Council Community Grant last year.

Sessions are held every week at 9.30 am to 11.00 am in school terms.

Following keen interest shown last year, it is anticipated that available places will fill quickly. For more information, please phone Wendy on 6428 8648.

Funding Opportunities

Sport and Recreation Tasmania - Major Grants

To provide financial assistance for major equipment purchases and the development/improvement of facilities or playing surfaces that directly benefit sport and recreation clubs and improves the opportunities for Tasmanians to participate in sport and active participation.

Funding Amount - \$15,000 to \$80,000. Total pool: \$840,000.

Applications close 29 January.

More information is available from Sport and Recreation Tasmania by phoning 1800 252 476 or emailing sportrec@development.tas.gov.au

National/International Sport Championships Program

To assist in meeting costs associated with hosting national/international sport championships within Tasmania.

Funding Amount: \$40,000 with a maximum of \$6,000 per organisation per sport.

Applications close 28 March.

More information is available from Sport and Recreation Tasmania by phoning 1800 252 476 or emailing srt.grant.applications@development.tas.gov.au

Inger Rice Foundation Grants

The foundations objective is to promote children's health, welfare and development and may offer funding for early intervention programs; family support programs; resources and training required for the implementation of programs.

Funding Amount: Up to \$5,000 per applicant.

Applications close: Ongoing

Application forms are available from the Inger Rice Foundation, PO Box 307 Civic Square, Canberra, ACT, 2608 or by phoning 0438 897 993

Monster Garage Sale

Do you have items in your house and yard that you no longer have a use for? Why not donate them to the Latrobe RSL and help raise funds through their Monster Garage Sale on February 1 to assist with their ongoing welfare activities for ex-servicemen and women.

Items are able to be delivered to the Latrobe Guide Hall from 29-31 January by appointment, phone 6426 1255.

If you don't have something to donate, perhaps you would like to buy something so don't forget to mark 1 February in your diary.

Darrel Baldock Memorial Project Update



Construction will start this month on the Darrel Baldock Memorial at the Latrobe Recreation Ground.

It is expected, after the first sod is turned, the project should be completed

sometime in March or April depending on the delivery of the statue, the centrepiece of the memorial.

Much work over 2013 has been spent on the development of the statue with renowned Australian artists Gillie and Marc Schattner with the Baldock family approving the clay model of the statue late in 2013.

The statue is now being founded for delivery.

Renowned construction company Fairbrother Pty Ltd and North-West manager, Darryn Smith, has been involved in the project from very early on and will manage the construction.

Much of the fundraising for the project has now been completed with a couple of major announcements still in the pipeline.

In total, when completed and considering cash and in kind financial donations, the project will be valued at over \$360,000.

State and Federal governments have contributed to the project, which is under the auspices and supported by the Latrobe Council.

Local business have made donations, some becoming major partners, as have service clubs and the support of the community in general has been integral.

Once completed this project will cement in place the legacy of one of the greatest icons of this region, let alone Tasmania.

Council Works Report

The following works are scheduled to be undertaken throughout the Latrobe Municipality over the next couple of months. Should you have any queries in relation to same, please do not hesitate to contact Council's Engineering Works Coordinator on 6421 4650.

Roads

- Alexander Street Kerb and Channel
- Cotton Street Kerb and Channel
- Cotton and Stanley Street stormwater network upgrades
- Chapel Road widening and reconstruction
- Kobie Lane reconstruct and seal
- Bakers Beach Road and Kermod Creek Bridge Replacement
- Squeaking Point Road and Woodbury Lane drainage upgrades
- Moriarty Road drainage improvements
- Alexander Street Footpath - Poyston Drive to opposite Information centre
- Gilbert Street continuation of paving footpath
- Meredith Street footpath - Kermod Street to Rice Street
- Reibey Street footpath - Bradshaw Street to Briar Court
- Footpath extension Sheean Walk to Atkinson Park

- Roadside slashing

Buildings

- Latrobe Youth Centre - access for disabled and adjacent car parking
- Tasmanian Regional Arts building - disabled ramp at front entrance
- Port Sorell Community Centre at Camp Banksia
- EPU Maintenance
- General building maintenance

Parks and Reserves

- Construction of new skatepark at Perkins Park
- General landscaping
- Lawn maintenance at EPU's
- General parks maintenance

Outdoor Pet Dining

With the busyness of the summer season, Tranquilles are extending their regular open hours to include a Sunday lunch option from 11.30 am until 2.30 pm each Sunday until Easter.

"The menu will vary with bookings recommended," advises owner, Cathy Zappala.

For those with a pet, they are also offering an outdoor pet dining experience. "Being a pet owner ourselves, we look for eating places that allow us to bring along our dog and thought why not cater for fellow

dog lovers at our own place," added Cathy.

Bookings can be made by phoning 6428 7555.

Concert In The Vines

Ghost Rock Vineyard's 5th annual outdoor concert will be held on Saturday 1st March as the opening event for the Devonport Food and Wine Festival.

This year the headline act will be James Reyne and his Band with support acts Julianne De Sisto from Launceston, Brett Budgeon and The Doctors Rocksters who will certainly prepare the crowd for the main act later in the day.

Tickets are \$60 so call the Cellar Door today on 6428 4005 or purchase online or in person through the Devonport Entertainment Centre www.decc.net.au.

The music will start at 12 noon and continue to 5.00 pm. BYO chair, sun hat or raincoat and lunch box picnic if you wish or there will be gourmet barbecue foods available for purchase. Sealed bottled water is also allowed but strictly no alcohol or eskies. This is an all weather event!

Phoenix Coaches will be running buses to the event and should be contacted on 6427 7626 for more information.

Sassafras Heritage Farming Weekend

The Sassafras Heritage Farming Weekend will be held on 1-2 March at 7738 Bass Highway, Sassafras (look for the Fergie tractor on the pole).

Two days of displays will cover all aspects of heritage farming including harvesting and processing demonstrations, sheep shearing, dairy displays, crafts, tractors, stationary engines, chaff cutting and baling displays, rope making, display of stone wall building, vintage cars, bikes, model engineering display, food stalls, animal nursery, live music with Reno and Jade Morea and featuring a very special guest artist from interstate.

There will be plenty of seating under shade and the disabled and elderly are catered for with transport around ground.

Children and adults alike will be able to ride the carousel and popular miniature railway, rounding off an experience not to be missed.

Admission is \$20 per family or \$10 per adult with children free.

For more information, contact Brian (0400 248 044), Allan (0409 516 290), Kaye (0418 513 431) or Phil (0408 330 813).

What's On

Information on regular, weekly activities is detailed on Council's website at www.latrobe.tas.gov.au (under tourism).

jan

Art by Deborah Conroy at Ghost Rock Vineyard, 1055 Port Sorell Road, Northdown from 11am until 5pm Wednesday to Sunday. ☎ 6428 4005

Summer Ranger Program (FREE) at Narawntapu National Park, Bakers Beach through to 8 February.

1 Penguin Island Swim from the Port Sorell Surf Life Saving Club, Hawley from 11am. ☎ 0429 803 026

4 Port Sorell Surf Fiesta in Shearwater Park and North Freers Beach from 11am until 4pm. Email psfiesta2012@gmail.com

5 Tasmanian Government 1000's wood chopping at the Australian Axemans Hall of Fame, Bells Parade, Latrobe from 9am. ☎ 6426 2099

10-11 Surfgrons at Hawley. 8-hours of surfing tuition, surfboard and wetsuit hire over 2-days for 5-12 year old boys and girls. Cost: \$150 which includes a Vegemite Surfgrons Gift Pack valued at \$250. Register at www.surfgrons.com/ ☎ 0419 120 704.

11 Book Sale at the Port Sorell Memorial Hall to raise funds for the Port Sorell Lions Club Relay for Life team. ☎ 0407 852 946 or 6428 6149.

12 East 39th Jazz Trio performs at Ghost Rock Vineyard, 1055 Port Sorell Road, Northdown from 1pm until 4pm. Free. ☎ 6428 4005

18 Carpark Sale at the Port Sorell Golf Club, the Boulevard, Shearwater from 8am until 2pm selling plants, produce, bric-a-brac, books and a sausage sizzle. ☎ 6428 6708

18 Kids in the Kitchen at Tranquilles, Gumbowie Drive, Port Sorell from 11am until 1.30pm. A fully supervised cooking experience for 7-11 year olds where they make their lunch and other tasty treats to take home. Cost: \$60 pp. Bookings essential to 6428 7555.

17-18 Super Sedan Grand Prix at Bendigo Bank Arena, Speedway Drive, Latrobe from 6pm. ☎ 0418 141 880

21 Traditional Sri Lankan Cooking Class with Kamal Shri Rucoan Ranhosinghe from 10am - 1pm at Tranquilles, Gumbowie Drive, Port Sorell. Cost: \$95 per person. Bookings to 6428 7555 or www.tranquilles.com.

21-26 Latrobe Art and Photographic Exhibition at the Australian Axemans Hall of Fame, Bells Parade, Latrobe from 9am until 4pm daily. ☎ 0400 578 746

26 Henley-on-Mersey at Bells Parade, Latrobe from 9am until 4pm. Celebrate Australia Day with a host of Australiana themed challenges and displays of interest to all ages. Great prizes to be won. (6426 1442 or www.henleyonmersey.com.au)

26 Port Sorell Lions Australia Day Waterslide and

community activities at the Port Sorell Lions Club Caravan Park, Meredith Street, Port Sorell from 9.30am. ☎ 0408 144 163

- 31 Parent and Child Creative Cooking** at Tranquilles, Gumbowie Drive, Port Sorell from 11am until 1.30pm. Cost: \$145 for both. Bookings essential to 6428 7555
- 31-1 Australian Sprintcar Titles** at Bendigo Bank Arena, Speedway Drive, Latrobe from 6.00 pm. ☎ 0418 141 880

feb

- 1 Monster Garage Sale** with proceeds supporting the work of the Latrobe RSL. To be held at the Latrobe Guide Hall, Hamilton Street, Latrobe. ☎ 6426 1255
- 1 Traditional Sri Lankan Banquet** featuring a selection of Kamal Shri Rucoan Ranhsinghe's menus from 7pm. Cost: \$50.00 per person. Bookings to 6428 7555 or www.tranquilles.com
- 2 Jazz at the Port** at Camp Banksia, cnr Pitcairn and Anderson Street, Port Sorell from 1pm until 5pm. Cost: \$10. Tickets at the gate. ☎ 6428 7394
- 5 Chat 'n Choose Registration Day** from 10.00 am until 12 noon at the Latrobe Baptist Church Hall, Gilbert Street, Latrobe. ☎ 6426 1220 or 6426 1740
- 8 Silverado Country Music Grand Final** at the Australian Axemans Hall of Fame, Bells Parade, Latrobe. ☎ 6426 2099
- 15-16 Latrobe Flower and Vegetable Show** at Latrobe Memorial Hall from 9am until 4pm both days. ☎ 6428 4170
- 16 Country Music Day** at Bells Parade, Latrobe from 11am to 4pm. ☎ 0407 803 529
- 16 A Day for Butt** at Perkins Park, Latrobe from 11am to 7pm. ☎ 0417 386 191
- 16 Kram** performs at Ghost Rock Vineyard, 1055 Port Sorell Road, Northdown from 1pm until 4pm. Free. ☎ 6428 4005
- 18 Traditional Indian Cooking Class** with Kamal Shri Rucoan Ranhsinghe from 10am - 1pm at Tranquilles, Gumbowie Drive, Port Sorell. Cost: \$95 per person. Bookings to 6428 7555 or www.tranquilles.com
- 22 Tasmanian Boxing Championships (Elite)** at the Latrobe Memorial Hall, Gilbert Street, Latrobe from 6.30pm. ☎ 0419 502 532

mar

- 1-2 Sassafras Heritage Farming Weekend** at 7738 Bass Highway, Sassafras from 9am-4pm. ☎ 0418 140 901
- 1 Concert in the Vines** featuring James Reyne at Ghost Rock Vineyard, 1055 Port Sorell Main Road, Port Sorell from 12 noon until 5.30pm ☎ 6428 4005
- 1 Speedway Racing** featuring Super Sedans, Street Stocks (State Title), Junior Sedans, Lightning Sprints, AMCA, Speedkarts at Bendigo Bank Arena, Speedway Drive, Latrobe from 6pm. ☎ 0418 141 880
- 2 Clean Up Australia Day** - www.cleanupaustaliaday.org.au
- 3 Latrobe Lions Youth of the Year Club Final.** ☎ 6426 1442

Your Elected Representatives

Mayor Mike Gaffney, 43 Gilbert St Latrobe 6426 1797

Deputy Mayor Rick Rockliff,
90 Churchills Road, Sassafras 6426 7283

Rob Beveridge, 65 Esplanade, Hawley Beach... 6428 7693

Dayna Dennison, 3 Colin Crt, Shearwater 6428 7844

Peter Freshney, 87 Shearwater Bvd, Shearwater 6428 7004

Michael McLaren, 37 Gilbert St, Latrobe 6426 2777

John Perkins, 26 Palmers Rd Latrobe 6426 2585

Garry Sims, 300 Wesley Vale Rd Wesley Vale. 6428 4019

Lesley Young, 265 Greens Creek Rd, East Sassafras
..... 6426 7235

2014 Council Meeting Dates

Latrobe Council recently confirmed the following meeting dates for 2014 -

January 20th	July 14th
February 10th	August 11th
March 11th (Tuesday)	September 8th
April 14th	October 13th
May 12th	November 10th
June 10th (Tuesday)	December 8th

All meetings are held at the Latrobe Council Chambers, Gilbert Street, Latrobe and commence at 5.00 pm sharp.

The meetings include a public participation section at the start of the meeting, enabling residents to raise any issue of concern to them. Please liaise with Mrs Winter on 6421 4650 if you would like to avail yourself of such an opportunity.

Plan Your Promotion

Article deadlines and distribution dates for the next 12 months are -

Deadline.....	Distribution Date
13 February	4 March (Tues)
17 April	5 May
12 June	30 June

Articles may be submitted to Michelle Dutton via email michelled@latrobe.tas.gov.au; facsimile 6426 2121 or mailed to PO Box 63, Latrobe 7307.

Contributions must be relevant to the Latrobe Municipality and suitable for inclusion. They will be used at the discretion of the editor, in whole or part, or not at all, in the next scheduled issue or subsequent issues. The Council does not pay for editorial submitted. Information supplied is correct at the time of printing. Although all care has been taken in the production of this newsletter, Latrobe Council accepts no responsibility for any inaccuracy or error contained in this newsletter as a result of information supplied.

April/May School Holiday Planning

Are you a business or community organisation that would like to be involved in the April/May school holiday program, collaboratively developed by the Latrobe and Kentish Councils?

The school holiday program provides opportunities for young people aged from 8-16 years with an active program sought to be implemented, particularly for the upper end of this age group.

If you would like to discuss your possible involvement, please contact Michelle on 6421 4650 by 18 February.

This timeframe enables the program to be developed and printed for circulated through all schools in both Municipalities early April, prior to wider public distribution.

FOOD, FUN, FERRETS AND FITNESS HENLEY-ON-MERSEY



9.00AM - 4.00PM 26TH JANUARY
BELLS PARADE, LATROBE



- FERRET RACES
- AXEMANS CARNIVAL
- STATE CHAMPIONSHIP TRIATHLON
- BETTA BOAT RACE
- GREAT CHERRY SPIT COMPETITION
- WOODEN BOATS
- GUMBOOT THROWING
- HISTORIC DISPLAYS
- FINE FOOD AND REFRESHMENTS
- COMPETITIONS FOR ALL AGES
- AND MUCH, MUCH MORE!

ADULTS \$5.00 - KIDS \$1.00
CHILDREN UNDER 5 FREE



Rotary Club of
Latrobe



Lions Club of
Latrobe



Latrobe Council