



LONGEST PEDESTRIAN SUSPENSION BRIDGE OPENS

It is not long until Australia’s longest pedestrian suspension bridge, spanning 148m across the Mersey River, will be open.

At the time of writing, the construction of the associated access trails were to be built before this could be effected.

The bridge is a crucial link in the Wild Mersey Mountain Bike Trail network and was initially planned to have opened before now however, works were suspended when an active eagle’s nest was discovered nearby, and other challenges needed to be overcome. The bridge has been designed to allow cyclist and walker use and is well above this location’s highest known flood level.

Hopefully, you aren’t daunted by the height and length of the suspension bridge and feel confident to experience it when open. It is a great spot to view the local platypus.



PENSIONER SAVINGS TO BE MADE ON COUNCIL RATES

Under the Tasmanian Government Concessions, eligible pensioners can receive a 30% rebate from the State Revenue Office on their Council rates however you need to apply via Council to be considered for such a remission.

Council is accepting retrospective pension remission claims for the current financial year (22-23), which are then reviewed by the State Revenue Office for eligibility.

Additionally, any claims submitted prior to 1 July 2023 will appear on the rate notice for the 2023-24 financial year. Council encourages eligible people to submit a pension remission claim if they meet the criteria.

This claim can only be made once per financial year and for the property that you occupy as at 1 July, subject to you also being eligible as at 1 July.

To learn about these and other concessions that you may be eligible for, download the Discounts and Concessions Guide at <https://bit.ly/TasmanianConcessionGuide22-23>.

HEAVY VEHICLE LIMIT

Council continues to engage with the National Heavy Vehicle Regulator, Department of State Growth and associated stakeholders to develop and implement an appropriate weight limit for heavy vehicle usage of Gilbert Street, Latrobe.

Council is awaiting feedback from the Department of State Growth after meeting to discuss the current situation and better understand the Council’s concerns.

NEW ROAD NAMED

Following the approval of a subdivision off Cotton Street opposite Bosworth Park, a new road has been constructed.

As the road authority, it is the Council’s statutory responsibility to assign names to urban streets within the boundaries of its local government area. When this occurs as the result of a subdivision, the developer is invited to submit two preferred names for consideration by Council.

In this instance, the developer only submitted the name “Campbell” to



commemorate the recently deceased Kae Campbell.

The street name also required a road type, with Close describing a short, enclosed roadway.

With endorsement from Kae’s family, Council has submitted Campbell Close to the Place Names Advisory Panel for review.

THE LETTERS OF GORDON ILES

With ANZAC Day still fresh in our minds, the Latrobe Courthouse Museum at 113-115 Gilbert Street, Latrobe continues to display one man’s experience of World War 1 with the exhibition *The Letters of Gordon Iles*.

Mr Iles was born at Thirlstane on 13 March 1895 and was killed in the Battle of Dernancourt in Northern France on 5 April 1918.

This exhibition will be open from 1:30 pm until 3:30 pm every Tuesday to Thursday until the end of May.

YOUR ELECTED REPRESENTATIVES

Mayor Peter FRESHNEY0417 287 006
 D/Mayor Vonette MEAD.....0407 055 180
 Claudia BALDOCK0424 782 379
 Graeme BROWN0417 598 116
 Dave FIDLER0457 880 028
 Jacki MARTIN0409 435 825
 Sommer METSKE0409 622 710
 Garry SIMS 0419 139 053
 Gerrad WICKS0488 325 590

The postal address for all Councillors is
 P O Box 63, Latrobe, 7307

COUNCIL'S WORKS REPORT

The following works are scheduled to be undertaken throughout the Latrobe Municipality during March and April:

CIVIL CONSTRUCTION AND MAINTENANCE

Road works throughout Latrobe
 Roadside mowing in the Bakers Beach area

Roadside mowing in the Tarleton area

Drainage works in Jasmine Drive and Shannon Drive to continue this month into next.



TOWN SERVICES

Automatic front gate installation at Latrobe Works Depot

Pig Island path restoration

Upgrade drainage in Quinlan Crescent, Shearwater

Elderly Persons Unit upgrade

Install crossover at Club Drive and Banksia Rise, Shearwater

Carpark widening at Panatana Family Park, Port Sorell

Install side door airlock at Port Sorell Memorial Hall

GREEN SPACES

Topping up mulch in gardens (all areas)

Refresh of plants in Darrel Baldock Memorial, Latrobe

Planting of trees and levelling of grassed areas at Bosworth Park, Latrobe around the pump track and BBQ area as well as improvements to the carpark area outside playground

Tree planting to replace flowering plums on the northern side of Gilbert Street and east of Percival Street, Latrobe

Repair of flood-damaged tracks on Pig Island, Latrobe

Planting trees around Alexander Street information bay and entrance to Port Sorell
 Foreshore path vegetation trimming at Shearwater/Hawley/Port Sorell

Should you have any queries about the above works, please do not hesitate to contact Council's Operations Manager on 6426 4453.

UPDATE ON TASMANIAN PLANNING SCHEME

In December 2015, the Tasmanian Parliament enacted amendments to the *Land Use Planning and Approvals Act 1993*, providing a single planning scheme for Tasmania - the Tasmanian Planning Scheme (TPS).

The Tasmanian Planning Scheme consists of two parts: the standardised State Planning Provisions (SPPs) and each municipality's Local Provisions Schedules (LPS).

The LPS allows each Local Government Area to add its zones and site-specific standards to the Tasmanian Planning Scheme.

A planning scheme is a legal instrument that applies to all private and public land, and it controls and guides what you can and can't do in relation to the use and development of the property.

Council has been drafting the Latrobe Local Provisions Schedule (LPS) for assessment by the Tasmanian Planning Commission (the Commission). The draft LPS was placed on exhibition in January 2022, and the community was invited to make representations.

In December 2022 the Commission conducted a series of hearings, and following the hearings, they sought further information from Council and other parties. The Commission has now reached a decision and has directed Council to modify the draft LPS.

When the directed modifications have been undertaken and the Commission is satisfied the draft LPS meets the criteria under the *Land Use Planning and Approvals Act 1993*, the LPS will then be approved, and form part of Latrobe's new planning scheme called the Tasmanian Planning Scheme - Latrobe.

A copy of the Commission's decision can be found at <https://bit.ly/LatrobePlanningScheme>.

SUPPLY AND DEMAND STUDY

Council recently engaged consultants Remplan, to undertake a supply and demand analysis as a first step to support our long-term strategic planning.

The purpose of the project is to gain a greater understanding of the factors driving demand in Latrobe's settlements and to determine a detailed analysis of current and potential supply of land and dwellings. Specific deliverables for the project are - Targeted stakeholder engagement incorporating Council representatives, infrastructure providers, social service providers and market stakeholders.

An analysis of housing demand, delivered as population and housing forecasts.

A supply analysis in the focus areas of Latrobe and Port Sorell considering growth strategies.

Over the coming months, Council will inform you how and when you can participate in the strategic planning processes.

LOCAL GOVERNMENT REVIEW NEARS COMPLETION

Just one step remains in the Review of the role, services and efficiency of Local Government by the Local Government Board following the presentation of their Interim Report to the Minister for Local Government in March.

This document provided detail of the research and engagement undertaken during Stage 2 of the Review and was expected to be publicly released by Minister Street in April.

The third and final step in the review



process has now commenced, involving further engagement before a detailed reform package is developed.

To date, the Local Government Board has indicated that Local Government will not stay the same as it is currently, with three reform pathways being progressed -

1. Significant (mandated) sharing and consolidation of services,
2. Significant boundary consolidation to achieve fewer larger councils.
3. A 'hybrid' model combining both service and boundary consolidation.

To be involved in this final opportunity for consultation, keep an eye out on the Local Government Board's newsletter (subscribe online to

<https://engage.futurelocal.tas.gov.au/community-meetings>), website

(www.futurelocal.tas.gov.au), newspapers, social media and other supporting media.

After all, there is no point jumping up and down if you don't like the result if you aren't part of the process initially.

MEETING POLICY CHANGE

The Council, at its February meeting, resolved to amend its Public Participation and Question Time - Council Meeting Policy by stipulating that a member of the public in the future will be limited to asking a maximum of two (2) questions on notice at each meeting and further that questions with multiple parts will not be accepted, with each part being considered a question in its own right.

A copy of the Council's Public Participation and Question Time - Council Meeting Policy is available at www.latrobe.tas.gov.au/council/publications/policies.

THE END OF AN ERA FOR WAYNE

After 24 years as a caretaker at the Latrobe Recreation Ground, Wayne Jaffray has decided to pursue the good life in retirement.

Mr Jaffray has been a valued contributor to the operation of the Latrobe Recreation Ground, always eager to support the many user groups.

You always knew when the football finals and Christmas Carnivals were nearing as Wayne cleaned the grandstands with the longest-handled broom you would ever see. His pride in the facility was none more evident when cleaning up after major events, and within no time at all the venue would be back to pristine in readiness for the next event. Wayne's friendly disposition and 'can do' attitude will undoubtedly be missed. Council wishes Wayne all the best in his travels and whatever his retirement holds.

OPEN SPACE, SPORT AND RECREATION PLANNING

Latrobe Council and Kentish Council have engaged with their communities via Otium Planning Group (a sport and leisure planning consultancy) to develop a strategy that will provide a long-term direction for the planning and management of the open space network throughout the Council areas for the next ten years.

The key objectives of the Open Space, Sport and Recreation Plan includes improved planning and maintenance of grounds and facilities; their sustainability and management; improving their distribution, mix and use while ensuring liveability through access by the community.

Key to this process is input from visionary user groups, casual users and even non-users of the Council's open spaces, sport and recreation facilities to ensure they cater for now and well into the future.

Consequently, face-to-face consultation and an online survey were undertaken throughout March.

Otium Planning Group is compiling the information received into a draft report which will then be released for further public comment. This is expected to occur in May/June.

After the draft report is reviewed based on the information received from the community, a final report is expected to be received by Council for consideration, adoption and implementation in July/August.

If you want to be alerted when the draft plan is released, please register your contact details by the end of May by emailing council@latrobe.tas.gov.au.

UTAS BURSARY AWARDED

Congratulations to Macey Gibbons of Latrobe on her selection as the 2023 Latrobe Council's UTAS bursary recipient. Macey receives financial support of \$3,500 to assist with achieving her potential while studying for a Bachelor of Business at UTAS.

This opportunity is offered annually and managed by the UTAS Scholarship Office - <https://utas.uac.edu.au/utas-scholarships/>. Applications close each October for allocation the following year.

NEW BRAND FOR BANKSIA

With the redevelopment of the Banksia facilities nearing completion, Stream Art Design was engaged to develop a distinct style guide that could be incorporated into signage and promotional activities.

While each facility is distinct, there was a desire to adopt an overarching brand that could represent the whole site.



The resulting tri-coloured logo retains the coloured ribbons of the sub-brands, orange from the Banksia Centre representing the lichen on the rocks and green from Camp Banksia representing the vegetation while expanding to include blue to represent the seaside environment in which it is situated. The Banksia Centre is back to full operation with all user groups.

Port Sorell Indoor Sports have recently commenced JH Stadium Cricket on Sundays, combining indoor and backyard cricket. They have been successful with mixed and women's netball three times a week for their first roster back and are looking for teams for the next rostering period.

Shimjang Taekwondo is running twice a week for people aged five and above. They provide self-defence training for the whole family.

Port Sorell Table Tennis Club play three times a week and welcomes everyone along.

Other organisations that utilise the facilities within the Banksia Centre include Port Sorell U3A, Volleyball Tasmania, Pickleball and the Bridge of Hope Anglican Church.

As redevelopment works are progressing to schedule, with completion expected in July, bookings are now being considered for the Performing Arts space as well as group bookings for Camp Banksia, with the latter open from October 2023.

With vacancies filling quickly, please get in touch with the Banksia Facilities Supervisor on 0448 286 121 or email office@campbanksia.com to make a booking.



RATES AND PAPERLESS REMINDERS

The last rate instalment for the 2022-23 financial year was on 30 April.

If you have overlooked this final payment, please immediately pay your instalment in person, by direct debit, via Post Billpay, Bpoint, or BPay.

Ratepayers experiencing financial difficulties are requested to contact Council's Rates Officer on 03 6426 4444 rather than ignore this payment.

To cater for residents who are away over winter or those who prefer a paperless society, Council can email your rates notice and instalment reminders electronically.

This is an opt-in service. To sign up for this service, please complete the Request to Email Rates Notice online at www.latrobe.tas.gov.au/services/rates or call at the Latrobe Council office, 170 Gilbert Street, Latrobe.

ENSURE YOUR DOG REGISTRATIONS ARE CURRENT

Under the *Dog Control Act*, the owner must notify the Council in writing of any changes affecting their dog's registration details including if:

- You have moved to a new address in the Council area with your dog.
- You have moved to a different Council with your dog.
- You no longer have your dog.

It is equally important to keep your **microchip** details up to date. Council cannot update your microchip details, so if your circumstances change, please get in touch with the relevant microchip register. Council will be mailing out dog renewal notices on 1 July. If Council does not have your current details, you might not receive your renewal notice or may be unnecessarily traumatised if your dog has passed.

Please ensure that your details are up to date before the 20 June.

You can update your details by filling in the Change of Details Form on the Council's website

(<https://www.latrobe.tas.gov.au/services/animalcontrol>) or in person at the Council office, 170 Gilbert Street, Latrobe.

FREE COMMITTEE TRAINING FOR COMMUNITY ORGANISATIONS

Taking on a role in a community and sporting committee can be daunting; however, a series of free, one-day workshops are being held throughout Tasmania.

These workshops are designed to give you the skills and knowledge needed to function effectively as a community management committee, board or other governing body member.

While a full day of learning (from 9:30 am until 3:30 pm), the workshops are highly interactive and fun.

They are led by experienced workshop facilitators who are qualified and experienced in the governance of not-for-profit community organisations.

You will come away from the sessions with confidence in the key responsibilities of committees, effective committee meetings, recruiting volunteers and committee members, finances and budgeting, decision making, risk and conflict of interest specifically for community groups and sporting club.

This training has previously been held in Latrobe with positive feedback received. Future sessions are being held in Devonport (16 June) and Sheffield (17 June).

Participation is limited with registration essential via Eventbrite - search for Committee Training for Community Organisations in Tasmania.

LONG-TERM HEALTHCARE PLANNING

The Tasmanian Government has released an exposure draft of their *Long-Term Plan for Healthcare in Tasmania 2040*.

The Long-Term Plan provides a blueprint of how the Tasmanian Government will work in partnership with the Tasmanian community to achieve its vision that all Tasmanians are supported by a world-class, innovative and integrated health system. The Long-Term Plan is supported by three regional Clinical Services Profiles, which describe the clinical services to be delivered over the next five years in response to projected regional needs and identified priorities to expand and enhance clinical services.

The Long-Term Plan builds upon many initiatives already underway, including *Health Workforce 2040*, the 10-year strategy for *Digital Health Transformation - Improving Patient Outcomes* and hospital master planning. A copy of the Long-Term Plan and Clinical Services Profiles can be obtained from ourhealthcarefuture@health.tas.gov.au. Your feedback will help shape the final version of the Long-Term Plan and Clinical Services Profiles and the development of an implementation plan, which are expected to be released in mid-2023.

This opportunity closes on 19 May with feedback to be emailed to ourhealthcarefuture@health.tas.gov.au. Unless requested otherwise, all submissions will be published on the Department of Health website.

MID-YEAR BUDGET REVIEW

Council's 2022-23 budget estimates have been reviewed and updated, considering additional information received since preparing the original budget, including the actual results for the first half of the 2022-23 financial year.

This budget review included input from all management and staff with budget responsibilities, looking at the following: Additional income, expenditure and capital expenditure items approved at Council Meetings since the adoption of the original budget.

Unbudgeted income received and projects where final expenditure has exceeded the original budget.

The financial impact of the extreme weather event and associated flooding in October 2022.

Corrections to capital projects carried forward from 2021-22.

Revision of the 2022-23 capital program after a review of year-to-date progress and availability of materials and contractors to complete works.

The reduced capital program will result in a change in the overhead costs allocated to the remaining capital projects for 2022-23 and will also increase the overhead costs allocated to operating cost centres during 2022-23.

The budgeted operating costs were re-calculated during March and reported to the April Council meeting as a further budget review.

CHRISTMAS PARTY INSTEAD OF PARADE

Following the success of the 2022 Christmas Character Party at Bells Parade, Latrobe, the Lions Club of Latrobe has unanimously resolved to continue this event in 2023 and beyond instead of reverting to a street parade.

While the Latrobe Flood Mitigation works resulted in the last year's move away from a street parade, the resulting smiling faces, positive feedback and being able to better resource this event at a busy time of the year was a better outcome for the community and club.



President, Mrs Julie Holloway, said, "there are many street parades around Latrobe that organisations can participate in and people can attend but there is only one family Christmas Party where the focus is on spending quality time with family and friends while indulging in Christmas activities and carolling." Planning is underway for the family Christmas Party to be held on Saturday, 16 December at Bells Parade from 5:30 pm, so watch this space for updates.

Club members have been watching with interest the development of the Latrobe Flood Mitigation works, especially the works in Atkinson Park, which has seen the temporary removal of the Lions shelter. Please be assured that it has always been planned to reinstall this structure in Atkinson Park, albeit in a slightly different location.

With the Latrobe Speedway season concluding, members will now be cooking up a storm at Bunnings Devonport to raise funds for community projects. One project on the drawing board is the installation of new seating at the Latrobe Swimming Centre in George Street, Latrobe.

Lions meet at the Adult Day Centre, Hamilton Street, Latrobe, on the first and third Monday of each month. To continue providing services to our community, the Club seeks new members who can bring new ideas and new ways of tackling old problems. If this is you, please get in touch with Stuart (0459 191 444), Julie (0437 123 890) or Robert (0419 883 110) or email latrobe@lionstasmania.org.

GOVERNOR TOURS HIGHLIGHTS OF MUNICIPALITY

Her Excellency, the Honourable Barbara Baker AC and Emeritus Professor Don Chalmers AO, recently toured the Latrobe Council area.



One of her essential roles is to visit various communities, meet with Tasmanians, tour local infrastructure, and familiarise herself with the beauty of our state.

While challenging to develop an itinerary for Her Excellency's visit that presented the many facets of the Latrobe Council area in just a few hours, they visited Biomar Australia's fish feed plant at Wesley Vale, met with representatives of Geneva Christian College and the Rubicon Enhancement Volunteers, viewed progress on the redevelopment of the Banksia Facility at Port Sorell and Australia's longest pedestrian suspension bridge over the Mersey River as part of the Wild Mersey Mountain Bike Trail, dined with residents of Strathdevon and viewed the Latrobe Flood Mitigation Works before socialising at a Civic Reception with representatives of the local community.

In commemorating her visit they were presented with a framed photograph of the Squeaking Point Jetty, taken by Rusli Hashim, to hang in Government House.

DEVELOPMENT AT DULVERTON

Dulverton Waste Management has commenced building a new indoor composting facility that will reduce the environmental impact of composting on the site at Railton. There is no water released from the plant, instead seeing a high-quality liquid fertiliser by-product of the decomposition of many forms of food, garden, and commercial waste. The new plant will reduce odour impacts through the creation of the compost in nine computer-regulated tunnels where only air and water are required to be added to the material.

A broader range of products can be accepted, including residential organics and garden waste, as well as packaged food waste and clean building waste, reducing the carbon footprint of residents and businesses on the North West coast. Dulverton recently hosted a visit from the Kentish Garden Club. Almost 30 members saw the current process of commercial compost creation in an open windrow environment and discussed a range of issues around waste management and resource recovery. The members also visited the groundwork of the new multi-million-dollar processing plant now being built.



Other groups interested in a tour are welcome to contact the CEO, Ms Veronica Schilling, by phoning 6424 7344 or email veronica@dulverton.com.au.

WHAT IS AN EMOTIONAL SUPPORT ANIMAL?

Emotional Support Animals are pets that provide companionship and comfort to those experiencing common conditions such as depression, anxiety, phobias, and PTSD.

Emotional Support Animals don't have to be a certain type of pet, size, weight, or breed, or have special training. No set standard or accreditation process exists to qualify an Emotional Support Dog. Accordingly, Emotional Support Dogs are not recognised by law. They are not the same as Service Dogs/Assistance Animals and do not share the same rights and protections such as public access rights. Assistance dogs are working animals specially trained to help people with physical disabilities to move around, do everyday activities and tasks, and be more independent.

Assistance Dogs are granted full public access rights, allowing them to accompany their human almost everywhere. Public access rights are granted only after accredited organisations complete a thorough assessment, and accreditation must be re-issued annually.

Tasmania has laws that apply to guide dogs and hearing dogs but do not apply to assistance dogs. This law is called the Guide Dogs and Hearing Dogs Act 1967. This law permits people with a vision or hearing impairment access to all areas with their guide or hearing dog. A person with an assistance dog can be asked to show proof that the dog is an assistance dog. It is possible that an Emotional Support Animal can be upgraded to a Service Animal if a Registered Service Dog Trainer gives some training.

A certificate must be obtained from the trainer, and you are then required to apply to the Government for Assistance Dog Approval. The dog would then carry identification, giving them the same rights as service dogs/assistance animals.

ROADSIDE SPRAYING PROGRAM

Council is continuing the roadside spraying of its town, parks and reserves, rural and urban road spraying program through to June, weather permitting. If you require further information or do not wish to have herbicide sprayed adjacent to your property, even if previously registered, please get in touch with Council on 03 6426 4444 to confirm your registration on Council's No Spray Register.

FOOD SAFETY SUPERVISOR

From December 2023, certain food service and food retail businesses in Tasmania were required to appoint at least one trained Food Safety Supervisor (FSS). A FSS is a person who is trained to recognise and manage food safety risks; holds a current certification, can advise and supervise other food handlers at the business and works on the premises and is involved in the day-to-day food handling operation of the business. Accreditation is for five years.

Training must be completed with a registered training organisation in the units of competency of -

Two hospitality units:

SITXFSA005 - Use hygienic practices for food safety.

SITXFSA006 - Participate in safe food handling practices.

or

One retail unit:

SIRRFSA001 - Handle food safely in a retail environment.

Council's Environmental Health Officer can advise you if you need an FSS.

STAY INFORMED OF COUNCIL HAPPENINGS

The Council's primary source of information to residents is via this newsletter, on its Facebook page at <https://www.facebook.com/latrobecouncil> as or via Council's website at www.latrobe.tas.gov.au.

SUPPORTING MENTAL HEALTH

Horizons supports people aged 18+ who experience severe periods of mental unwellness (formal diagnosis not required).

They will assist you to work towards your goals by building skills, strategies and resources to manage your mental health and other areas of your life. They offer a short-term program, supporting people for up to 26 weeks.

They can meet people in their homes or the community as an outreach service.

For more information, reach out to Horizons by phoning 0418 886 135 or email nriley@baptcare.org.au

TRIMMING PLANTS AND TREES

There are many shared footpaths throughout the Latrobe Council area, but two things that should not be shared: overhanging trees and shrubs.

Trees and shrubs extending over and onto footpaths prevent using footpaths for their primary purpose - a haven for pedestrians, parents pushing strollers, mobility-impaired persons, cyclists, and even postal workers delivering the mail.

It can also redirect footpath users onto potentially boggy grassed verges or roadways as the nearest hard surface.

Property owners are reminded of their responsibility

to keep their trees and shrubs well into their property boundary, trim back any overgrowth from footpaths and collect any fallen vegetation that can create a slip hazard.



SLIPPERY WHEN ICY

Tasmania is a great place to explore with beautiful scenery, changing landscapes and roads that make for a great journey, but conditions can take you by surprise.

As summer turns towards the colder months, it brings colder temperatures, unstable weather, and potentially dangerous driving conditions.

Dealing with low visibility in rainy and foggy weather, battling icy roads, snow, and even just starting the car on cold mornings, the list of winter road hazards can be extensive.

To ensure you enjoy a safe journey on our roads, please slow down and use your headlights. Keep an appropriate following distance and avoid sudden braking and turning. Also, check your vehicle's road worthiness before departing.

Remember to drive to the conditions this winter season and pay attention to the warning signs about hazardous conditions.

Source: Vroom and ARSF

INJURED WILDLIFE

Every year thousands of native animals are killed on Tasmanian roads with wildlife most active around dawn and dusk.

If you come across sick or injured wildlife, contact the Injured and Orphaned Wildlife Program 6465 4305 (business hours) or Bonorong Wildlife Rescue 0447 264 625 (all hours).

ASTHMA SURVEY

Asthma Australia wants to know what life is like for Tasmanians experiencing breathing problems and asthma, in the 2023 Tasmanian Asthma Discovery Survey.

"Everyone experiences asthma differently, says Asthma Australia project coordinator Jess Tyler.

"What works in managing your asthma? What challenges do you face? How could your quality of life be improved? We want to learn more about personal journeys with asthma in Tasmania.

"If you have asthma or breathing problems, care for someone who does, or work in this space, we are interested in hearing from you".

"There are many ways you can take part and make your voice heard. We're running a quick and easy online survey, or you can register for one of our community forums. Alternatively, you can simply send us a text or email or even book a call for us to call you back so that the cost is on us."

To take part in the survey visit www.asthma.org.au/tasdiscovery, call or text 0474 654 555 or email

jtyler@asthma.org.au

GIVE WAY TO PEDESTRIANS

All due care and attention should be taken when entering a road from a road-related area or adjacent land, such as your driveway.

Section 74 of the Tasmanian Road Rules 2019 states that drivers must give way to any vehicle travelling on the road or turning into the road and any pedestrian on the footpath or road.

Failure to comply could result in a fine of 10 penalty units, currently equating to \$1,810.

NEW STREET BINS

New street bins have now been installed throughout Latrobe and Port Sorell urban areas that provide for landfill and recycling.

Items that can be disposed of in the **RECYCLING** bin (yellow top) include paper, paper products and cardboard; newspapers, magazines and junk mail; soft drink bottles and cans; bottles and jars (no lids); steel and aluminium cans as well as pizza boxes (not food contaminated). You must put the following in the **LANDFILL** (red top) bins - milk and juice cartons; cartons with foil linings; cigarette butts; waxed cardboard; disposable nappies; polystyrene and foam; plastic bags and clean cling wrap.

FUNDING OPPORTUNITIES

QANTAS REGIONAL GRANTS

After a 3-year hiatus, Qantas are reintroducing their community grants to not-for-profit community groups and projects seeking funding to directly benefit regional Australia.

Applications close 10 May.

For more information, go to <https://bit.ly/2023QantasGrants>.

TOURING GRANTS

Events Tasmania are offering touring grants of up to \$20,000 to eligible organisers of auto, motorbike, cycle or walking tours in Tasmania during the winter and shoulder season.

Funding is based on the number of interstate or international participants staying in paid commercial accommodation for five nights or more, with 40% or more of the tour being held in regional areas.

Application closes on 31 May with further information available at <https://bit.ly/2023EventsTasTouringGrants>.

TAS ENERGY SAVER LOAN SCHEME

The Energy Saver Loan Scheme provides 0% interest loans to eligible applicants to fund the purchase price and installation of energy efficient products.

For more information, go online to <https://brighte.com.au/tas-energy-saver-loan-scheme>

SMALL COMMUNITY GRANTS

While Round 1 of Latrobe Council's Small Community Grants closed on 1 May, Round 2 will open in August.

Now is the time to start thinking of potential partnerships with community and sporting organisations and how you can demonstrate the need for your project and consider applying for this funding support.

Funding is capped at \$1,500 per application with groups investing in their project being favourable received.

BUSINESS INFORMATION AND HAPPENINGS

BENEFITS PROGRAM TO LOCAL BUSINESSES

KaLIBA - the Kentish and Latrobe Business Association, has launched its program of benefits to all businesses across the Kentish and Latrobe municipalities.

The Guide provides details on a wide range of free business services and how to access them in the areas of:

- Staff, skills, and employment
- One-on-one business advice and support
- IT and online capability
- Business resilience and adapting to change
- Mobile phone and internet access solutions to issues
- General business advice, support, education and communication

Access your online copy at <https://bit.ly/KaLIBABusinessGuide>
KaLIBA supports EVERY business across the Kentish and Latrobe municipalities with free and paid memberships - from individual farmers, retailers, trades and new businesses, right up to our largest employers.

The KaLIBA Board has consulted widely with the local business community and developed five priority areas to meet the needs of the widest variety of local businesses and deliver programs and benefits to these businesses. These priority areas are:

1. Small business government regulation and process reform
2. Employment: skills, retention, recruitment, young people's careers and entrepreneurship
3. Business resilience and adapting to change
4. Mobile and internet infrastructure, online business capability, and cyber security
5. Communication, consultation, support services, local business networking, and lobbying

NO INTEREST MICRO-BUSINESS LOAN

Looking to start a new business or boost an existing one?

The No Interest Loan Scheme (NILS) helps low-income Tasmanians get safe, fair and affordable loans of up to \$3,000. Loans can be used for start-up costs, insurance/registration costs, and equipment purchases.

For more information, phone 1300 301 650 or go online to <https://nilstasmania.org.au/Website/Microbusiness>.

WHAT IS YOUR BRAND?

A powerful place brand isn't only about land, air and water. It's about people. The Tasmanian place brand is about you.

Brand Tasmania is thrilled to bring their Storytelling (25 May), Digital Storytelling (1 June) and Facebook Storytelling Workshops (14 June) to the paranapple Convention Centre, all commencing at 4:00 pm.

These low-cost workshops will give you the opportunity to learn about brand storytelling, what narrative is, and its power.

You will learn how to write your own individual story and by the end of your time together you will be ready to use your story in your own work - no matter what you do.

Registration on Eventbrite is essential at <https://bit.ly/BrandTasmaniaStorytelling>.

If you have any questions about these opportunities, please call Brand Tasmania on 0427 854 150 or email welcome@brandtasmania.com.au

VIEW REAL ESTATE ARE ON THE MOVE

View Real Estate are moving into 1/153 Gilbert Street Latrobe. The new office is bigger, allowing them to grow the business and offer their clients more of the same friendly and professional service that they know and trust.

Their contact details remain the same - 0408 666 301 or email latrobe@viewmail.com.au.



A LITTLE LOVE AND ME

Baby and children's clothing and associated educational resources shop, A Little Love and Me, is currently operating a pop-up shop at 1 Fairway Crescent, Shearwater.

Open from 10:00 am until 3:00 pm Tuesday to Saturday, the pop-up shop allows Jayne to get back into her local community and continue to find new ways to fulfill her purpose of supporting local families to thrive together. Jayne brings strong customer relationships with quality products and compassionate services to help you grow.

Their last day at this location is 13 May.

LUCAS HOTEL CAFÉ

A café arm of the Lucas Hotel has re-established "over the bridge" at the Lucas Hotel, 46 Gilbert Street, Latrobe.

Open from 6:30 am until 3:30 pm Wednesday to Friday and 8:00 am until 3:30 pm Saturday and Sunday, the Lucas Hotel Café offers dine-in and takeaway food and refreshment options including coffee, cakes and sandwiches.

They are also dog friendly, offering puppachinos, at their outdoor tables.

Establishing the cafe as a live music venue is a plan so if you are a musician, please contact Alisha on 6426 1101.

To make a reservation, phone 6426 1101, email lucashotel@bigpond.com or just call in and grab your to-go option.

THE LITTLE GALLERY

June, Lesley, Decima and Dawn of The Little Gallery are on the move.

Currently at 82-84 Gilbert Street, Latrobe, The Little Gallery will be relocating this month but will continue to provide a retail outlet for various mediums of art by Tasmanian artisans.

To contact The Little Gallery, phone 0408 270 079, email info@littlegallery.art or check out their website at www.littlegallery.art.

NEW MANAGEMENT AT SHEARWATER IGA

Shearwater IGA is under new management.

Jeremy Kode is finding his feet in the new environment and is progressively updating Shearwater IGA with some fantastic new Tasmanian products from local farmers and growers, "celebrating all the beautiful things our lovely island has to offer."

To stay informed of specials, new products, recipes and more, check out Shearwater IGA on Facebook at <https://www.facebook.com/ShearwaterIGA> or call in to 30 Shearwater Boulevard, Shearwater.

MUST LOVE IRONING

Latrobe based, Must Love Ironing offers ironing, steaming, sanitising, de-pilling, washing, and stain removal services throughout the North West Coast, including pick-up and delivery. They are also an agent for Torquay Dry Cleaners (Devonport) and can offer local garment alterations and repairs.

To contact Anna, phone 0493 255 338 or find Must Love Ironing on Facebook or Instagram.

NEW BUSINESS IN KENWORTHY'S

Frontier Tasmania is an exciting new business opening in Latrobe mid-May in the historic Kenworthy building located at 84 Gilbert Street, Latrobe.

Owner, Rhett Panizza is offering a unique blend of rustic, industrial and antique furniture plus hats, jewellery and decor. Frontier Tasmania will be open from 10:00 am until 4:00 pm Wednesday to Sunday, including public holidays.

NEW PIZZA BAR AND EVENT FACILITY

New visitor accommodation, event facility and pizza bar at 325 Mersey Main Road, Spreyton has received Council approval. Stay tuned for more information on its opening.

NEW CRAFT BEER BAR FOR LATROBE

A new cafe and bar featuring some of the best craft beers is opening soon at 63-65 Gilbert Street, Latrobe.

CRAFTED will be open for mornings and lunch as a café and throughout the day, they will offer a selection of over 300 local and international craft beers from their fridge.

On selected evenings, the venue will transform into a casual wine and craft beer bar including "out the back" where the old shed has been transformed into a space to grab a drink and sit on the deck, under the stars.

Follow Crafted on Facebook or check them out online at craftedbeverages.com.au

HARNESS/GREYHOUND RACING FACILITY

Council has received an application for a Harness and Greyhound Racing Facility at 353 Port Sorell Road, Wesley Vale. At the time of writing, this application was on hold while further information was sought from the applicant.

YARD MAINTENANCE

Looking for someone to help you with your lawn mowing, rubbish removal, garden maintenance, gutter cleaning, pressure washing or hedge trimming?

Dillon Castles of Latrobe has some availability throughout the Latrobe area with his business DC Yard Maintenance.

To find out more, give Dillon a call on 0499 991 096 or search for DC Yard Maintenance on Facebook.

LAURA STREET SHOP REOPENS

The home of the mega schnitty has reopened at 18 Laura Street, Latrobe has been missed.

The Laura Street Shop is open seven days a week from 8:00 am until 7:00 pm Monday to Wednesday, from 8:00 am until 8:00 pm Thursday and Friday, from 9:00 am until 8:00 pm Saturday and 9:00 am until 7:00pm Sundays.

To place your food order, phone 6426 2792 or just call in.

YOUR COMMUNITY UPDATE



MEN'S HEALTH FORUM

The Latrobe Community Shed Inc (LCS) will host a Men's Health Forum on 13 May at Hamilton Hub, 18 Hamilton Street, Latrobe from 8:00 am. The forum will commence with breakfast and continue through to 10:00 am.

Guest speaker, Darren Clark, is a Mental Health First Aid instructor passionate about encouraging men to be as healthy as possible. With years of experience, Mr Clark is the Director of Workplace Alive and Well Training. To find out more about Darren, visit www.workplacealiveandwelltraining.com.au

To register your interest or for more information about the Men's Health Forum, please phone LCS on 0439 832 739, follow them on Facebook or email latrobecommunityshed@gmail.com.

The Latrobe Community Shed meet at 102 Last Street, Latrobe.

LATROBE MEN'S SHED

For the past ten years, the Latrobe Men's Shed has engaged with over 60 men who have completed 540 community projects for residents of the Latrobe community. Each Friday members gather at the shed in Kings Lane, Latrobe to complete projects and enjoy a time of fellowship.

A toolbox meeting is held at 10:00 am to discuss work to be done, meet new members, and enjoy a cuppa and biscuits/cake, with a BBQ at 12 noon. The daily charge is just \$3 with the annual membership for use of equipment and materials being \$20.

If you have a handyman project that you need a hand with, please contact Ralph (0405 464 023), John (0428 698 245) or Malcolm (0419 571 493).

INDEPENDENT LIVING SUPPORT OFFERED

Mersey Community Care Association (MCCA) has provided excellence in independent inclusive living support to aged and disabled people and their carers for over 50 years.

MCCA offers a variety of services, including transport to and from medical and social appointments, shopping support, visiting, social bus trips, renal unit transport, domestic assistance and home maintenance, lawn mowing and garden care to clients and their carers living in the Latrobe, Kentish, Devonport and Central Coast Municipalities. They are also a registered NDIS provider.

As a "not-for-profit," MCCA relies on government funding, volunteers, donations and sponsors to assist with the operational costs involved in delivering their services. If you are wishing to access MCCA's services, support financially or volunteer, please phone 6424 8883 or drop in to 167 Steele Street, Devonport, from 8:30 am until 5:00 pm Monday to Friday.

NEW COMMITTEE FOR HENLEY-ON-MERSEY

Following a community meeting on 20 March on the future of the Henley-on-Mersey festival, a new community committee has been formed.

It comprises of Mark Laycock (President), Mandy Traill (Secretary), Harold Deverell, Jenny Lamont, Rick Slatter, Mark Smith, Richard Thomas and Nigel Westbrook.

With the skills and talent of these individuals, there is no doubt that they will quickly get on with formalising their structure and facilitating an event for the community to enjoy, hopefully by next January.

In the meantime, if you wish to help or provide input, please get in touch with them via Facebook - www.facebook.com/HenleyonMersey.

MARKET COMMITTEE NOMINATIONS

Gaining your Bronze Medallion or Surf Rescue Certificate is no easy feat - it takes swimming capabilities and many sessions of theory and practical activity. This Summer 17 of Port Sorell Surf Lifesaving Club's members proudly and deservedly achieved one of these accolades, bringing the volunteer list for summer patrols to over 60. 60 people committed to helping the community to safely enjoy the local beaches. Thank you to all these much-valued volunteers.

The nippers, seniors and masters alike have had a fantastic summer of training and carnivals - building confidence and friendships and improving their skills.

The Club successfully hosted three Market by the Beach events - a major source of fundraising and a way to connect with the local community. To keep events running smoothly and reflective of community interests, the club invites interested locals to be part of a working group specifically focussed on ensuring the sustainability of Market by the Beach. Please email portsorellslc@gmail.com or text 0448 819 848 to leave your contact details.

With funding from Healthy Tasmania, the club also hosted families from the East Devonport Child and Family Centre for a fun day at the beach and a group of students from Latrobe High to experience some 'learning for life' activities.

After the success of last winter's Solstice Splash, the Club invites you to save the date for this year's Splash - proposed for 24 June.

Follow the club's Facebook page for continuing ways it is 'Bringing the Community to the Beach' - <https://m.facebook.com/portsorellslc/>



LATROBE LIBRARY

Choice magazine is now available online for FREE for Libraries Tasmania members!

Established over 60 years ago, Choice provides articles and product reviews, health tips and money advice. The magazine offers unbiased reviews of products, services and issues that affect consumers, making it a valuable resource if you're looking for information before making a purchase.

You can access the latest issue of Choice magazine now - no holds required! Simply download the Flipster app on your Android or Apple device, add Libraries Tasmania as your library and log in with your library card.

Alternatively, you can go online to www.libraries.tas.gov.au and navigate to the eLibrary Magazines and Newspapers section. Digital back issues from as far back as 2015 are available.

The Latrobe Library have an excellent selection of magazine titles listed on their catalogue. If you place a hold, they'll message you when it's ready to collect from the Latrobe Library.

If you would like some help placing a hold or using their Apps, please see the friendly staff at the Latrobe Library which is open from 1:00 pm until 5:00 pm on Monday, Tuesday, Thursday and Friday.

ABSTRACT ART FOCUS OF EXHIBITIONS

The Crowded Lounge continues to feature artists monthly with May seeing the acrylic and mixed media abstract works of Karen Knight displayed.

In June, an exhibition titled "Dreams" by Isabel Farr-Aaberg features abstract watercolour works.

The Crowded Lounge includes a mini gallery space accessible through the Lounge internally or through its own front door.

Local and feature artists wishing to display in either space are invited to forward their submissions to tcleventslatrobe@gmail.com or contact Michelle Smith on 0459 239 192.

Pam Lockwood continues to host Watercolour Workshops on the 4th Tuesday of each month. So popular are these workshops that Pam is now offering them on the 2nd Tuesday of the month also.

A Lamp Shade Making Workshop will be held on 5 May under the tutorage of Annie. In a relaxed small group, you will be provided with the steps, materials and tools needed to create a new, magnificent lampshade for your ceiling or a lamp base. Weekly art classes by Michelle continue to be held for after school students to seniors. For more information on the above events go online to www.facebook.com/Thecrowdedlounge.

POTENTIAL LATROBE CWA BRANCH

The Country Women's Association (CWA) in



Tasmania has just celebrated its 87th birthday since the first branch was formed in Tasmania. Over the years, their numbers around the state have grown and declined. They currently have about 500 members spread throughout Tasmania. Did you know that there is a local Sassafras/Wesley Vale branch? They are a small group of seven who work away quietly in your community. Their activities include organising the recently held 33rd Latrobe Flower and Vegetable Show in Latrobe, catering, supporting local schools and much more. They recently purchased two commode chairs for the Emergency Department of the Mersey Community Hospital and are currently working with Latrobe Council to install seating in Bosworth Park, Latrobe. They meet on the first Wednesday of each month at a member's residence at Wesley Vale and would like to have you join them so they can continue their work supporting this great municipality.

They are also keen to reopen a branch in Latrobe but need you so they can get this happening. If you think this might suit you or you would like to know more about the Sassafras/Wesley Vale CWA, please contact Lesley Young on 0419 326 250 or the CWA State Office on 6231 3706.

VOLUNTEERS KEEP HISTORY ACCESSIBLE

Tasmanian Family History Society Inc Mersey Branch (TFHS) takes this opportunity to thank all the volunteers for their assistance in running the branch and for all their input in indexing. TFHS volunteers also keep the rooms comfortable for researchers while accessing resources.

The indexing of F. E. Watts Funeral Directors of Latrobe is an additional local resource as well as newspaper birth, death and marriage indexing which add to the 23 years of notices currently held.

National Families Week from 15-21 May will feature a display in the TFHS front window of families from now back to the original settlers.

With Winter, the Mersey Branch Library is a warm corner to still be involved with life and do some family research, spend some time reading from their fabulous collection of family and local history books or just have a chat and a cuppa.

The Mersey Branch Library is located down the laneway beside the Latrobe Library and open on Wednesday and Friday from 10:00 am until 3:00 pm, phone 6426 2257. Everyone is welcome.

INTRODUCING POGS INC

POGS, an acronym for Protect Open and Green Spaces, are an incorporated group of volunteers working in the community to improve public open and green spaces throughout the Port Sorell area.

Established amidst calls for 8 Fairway Crescent in Shearwater Village to be preserved as a community park for all to enjoy, POGS continues its goal to permanently protect the remaining natural areas of the greater Port Sorell area, providing input into Latrobe Council's Public Open Space Plan.

If you live in the Port Sorell area and would like to learn more about the activities of POGS, why not come along to their next meeting (held monthly) at 3:00 pm on 27 May or 24 June at Brewstone Café, Meredith Street, Port Sorell or phone Hayley Crawford on 0408 672 194.

A SPOTLIGHT ON EUCHRE

One of the most popular new courses offered through Port Sorell U3A is Euchre with many participants being locals but a contingent travelling from as far as Beauty Point.

Euchre is a renowned card game, which many players learnt "with the dinosaurs", but after playing for three weeks, seem to have picked up how to play and have become more confident. Unlike Bridge or 500, where individuals play with more cards and greater concentration is needed, Euchre can be a more social experience, with time to chat and increase possible card friendships.

Peter Sellars, Euchre co-ordinator, invites you to join his group and bring a friend or two. Additionally, it's an opportunity to find out about other Port Sorell U3A classes which may interest you.

Port Sorell U3A welcomes new members and are constantly seeking new ideas for classes/skills development.

For more information, please go to the Port Sorell U3A website at <https://www.portsorellu3a.org.au/> or contact the office on 0499 162 539.

CHAT 'N CHOOSE

Chat 'n Choose commenced its 32nd year this year. Starting in 1992 under the guidance of Rev'd Dan Rough and his wife Irene, some 40-50 people turn up at 10:00 am Wednesdays during school terms at the Baptist Church hall, 125 Gilbert Street, Latrobe.

They enjoy a variety of craft work including knitting, crochet, macrame, card making, hardanger and wood turning to name a few.

The morning includes tea/coffee and biscuits at a cost of only \$2 with new members welcomed.

For more information contact Nelleka (0405 464 023) or Lorraine (0401 266 302).

GALLERY SPACE REINVIGORATED

Have you been to the Arts Hub, at 21 George Street, Latrobe and seen Rubicon River Arts' newly revamped gallery space. The Arts Hub displays the work of talented artists and includes paintings, ceramics, weaving, textiles, crafts, jewellery, tatting, books, gift cards and more.

Co-located with the Latrobe Visitor Information Centre, the Arts Hub is open from 10:00 am until 2:00 pm daily. The group also host a variety of workshops.

Rasa Dunlop will be conducting an Intermediate Weaving Workshop on 13 May from 10:00 am until 3:00 pm. Cost is \$60 per person with more information available from Rasa by phoning 0419 298 254 or emailing rasa.dunlop@gmail.com.

If you are interested in holding a workshop, please email the Secretary on

kmtyson38@gmail.com or phone 6428 6842.

If you are interested in the arts, Rubicon River Arts invite you to join their enthusiastic group. Meetings are held from 10:00 am on the first Saturday of every month.

To find out more about Rubicon River Arts, follow them on Facebook at www.facebook.com/rubiconriverartsinc

NEW PROBUS LEADERSHIP

The Rubicon Combined Probus Club recently held their Annual General Meeting with the new Executive comprising of President Jenny Maney, Vice President Margaret Buck and Treasurer Peter Cumming.

Any retired or semi-retired person is invited to join this club. There is no requirement that you must live in the Pot Sorell area.

There is also no fundraising by the group but rather a focus on friendship and fun as

members participate in social outings and hear from interesting guest speakers. Membership fees do apply.

The Rubicon Combined Probus Club meet at the Port Sorell Golf Club, Shearwater Bvd, Shearwater on the 4th Wednesday of each month from 10.00 am.

If you would like to know more, please phone President Jenny on 0428 157 383.

PLAYGROUP IN LATROBE

The Latrobe Community Playgroup runs every Friday morning from 10:00 am until 12 noon during school terms at the Latrobe Baptist Hall beside the Post Office.

Pre-school children are welcome to attend, accompanied by a parent or carer.

Morning tea is provided for accompanying carers, but children must have their own.

A wide variety of toys, equipment and activities ensure all children have a fantastic time.

For more information contact Lorraine on 0401 266 302 or Irene on 0418 539 273.

SPORTING HIGHLIGHTS

LATROBE CROQUET CLUB

Following his participation in the U21 World Championships in New Zealand, Curtis Mead continues to grow as a croquet player. Curtis gained some valuable experience playing against the top players from around the world which should hold him in good stead to compete in the New Zealand National U21 Championships.

The Northern Golf Croquet Pennant season has just completed with Latrobe Red Team of Colin and Gina Kirkland, Chris West, Dee Gibson, Garry Wells and Roberta Campbell beating East Launceston to win the final.

The recently completed Tasmanian Division 2 Championship was won by Latrobe's Gina Kirkland and the Tasmanian Women's Open Championship was won by Patsy Paine.

The club continues to host croquet "come and try" sessions for Port Sorell U3A and Latrobe High School. Pleasingly, the club's membership continues to grow. If you would like to try this fun game, please give Chris a call on 0499 990 239.



LATROBE BOWLS CLUB

The Latrobe Bowls Club recently held their Presentation Night.

Two divisions finished on the top of the ladder in the Thursday Ladies Pennant with Division 4 finishing in the top four in the Open Saturday Pennant.

Erin Moore and Tim Douce had success in the Tasmanian Championships with Erin skipping the State's winning fours and triples and Tim winning the State Pairs. They also won the club's singles titles.

The club was also well represented in the Statewide Senior and Open competitions with 17 members selected. Mary Beaumont managed the ladies' teams. Sponsorship of competitions is greatly valued by the club with Mackey's Royal Hotel sponsoring the Barefoot Bowls Competition for the 2023-24 season and BridgePro generously sponsoring the Club for the 2023-24 season.

Tuesday afternoon Indoor Bias Bowls commences on 2 May and, for something other than bowls, Crib will recommence over the winter months. Please contact Glennis on 0427 337 847 or bowlsclub@latrobebowlsclub.com for more information about either of these.

The Latrobe Bowls Club is a multi-use facility and welcomes enquiries from other groups and individuals to use its facility. One such organisation is a local quilting group, Platypus Patches, who come together every Tuesday morning. They will be holding their Friendship Day on 27 May. Contact Veena on 0427 585 070 for more information.

PORT SORELL TABLE TENNIS

The Port Sorell Table Tennis Club (PSTTC) is celebrating two achievements.

TABLE TENNIS AUSTRALIA'S 2022 NATIONAL VOLUNTEER AWARD FOR CLUB/ASSOCIATION OF THE YEAR

PSTTC reigned supreme out of 254 national Table Tennis clubs and is the only club in Tasmania to have ever won this award.

In awarding this accolade, Table Tennis Australia stated that "PSTTC is a role model for all other clubs in Australia". They recognised the growth of the club, which is now the third biggest in Tasmania; its inclusiveness; its succession planning with the development of juniors; its innovation particularly establishing the Annual Primary Schools Table Tennis Championships and its hard work, especially in exposing 1,200 primary school children to table tennis in 2022.



ALL TIME RECORD AT INAUGURAL PORT SORELL OPEN CHAMPIONSHIPS

The inaugural Port Sorell Open Championships held in Deloraine on the Australia Day long weekend saw a record 77 entries.

Many visiting players and families made a weekend of it with the event including several unique aspects, i.e. record number of juniors and players with special needs. For more information about the PSTTC, email portsorelltabletennis@gmail.com or phone 0400 841 121.

PORT SORELL TENNIS CLUB

The Port Sorell Tennis Club has three courts and a club room located in Kermod Street, Port Sorell.

The club offers Quadrant Tennis which is a doubles social competition where participants play against others of an equal standard. The lit courts enable Quadrant to be run of an evening year-round.

Quadrant runs on a Monday, Tuesday and Wednesday night, from 6:00 pm. The

competition will begin the week of 24 July for 8 weeks. Cost is \$40.

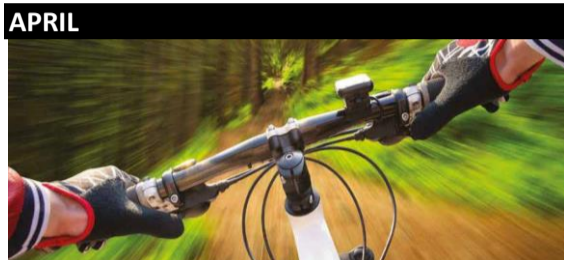
Junior coaching by a qualified Tennis Hot Shots coach is held every Thursday from 3:30 pm. For more information contact Peter Georgiades on 0439 637 301.

Social Tennis is held on Tuesday mornings at 10:00 am. Just turn up at the courts with your racquet.

Did you know it is easier than ever to book the Port Sorell Tennis Club courts? Simply scan the QR code on the

gate, enter your preferred time to play, add some contact details, pay by card and then unlock the gate via a code sent to your phone or visit their website at play.tennis.com.au/portsorelltennisclub. If you are interested in becoming a member of the Port Sorell Tennis Club (membership fees apply) or would like more information generally, please contact the club on Facebook or email them at portsorelltennisclub@hotmail.com.

COMING SOON TO A VENUE NEAR YOU



APRIL

29 Wild Penguin Quad Crown MTB Series at Wild Mersey Mountain Bike Trails (Latrobe) from 9:00 am.

30 Latrobe Cemetery Working Bee from 10:00am until 11:15am. BYO gardening implements and wear appropriate clothing. Food and drink at conclusion. ☎ 6426 4444

MAY

Throughout May - an abstract art exhibition by Karen Knight at The Crowded Lounge, 129 Gilbert Street, Latrobe

1-7 Youth Week Tasmania

4-6 AgFest

5 Lampshade Workshop with Annie from 10:30 am at The Crowded Lounge, 129 Gilbert Street, Latrobe. Cost: \$120 pp. Bookings online at <https://bit.ly/Lampshade5-5-23>

6 Silver Zephr performs at Mackey's Royal Hotel, 161 Gilbert Street, Latrobe from 8:30 pm. Free entry.

8 Latrobe Council Meeting at 170 Gilbert Street, Latrobe from 5:00pm. Attendance registration essential to 6426 4444.

13 Men's Health Forum at Hamilton Hub, 8 Hamilton Street, Latrobe starting with breakfast at 8:30 am. Registration essential to 0439 832 739 or email latrobecommunityshed@gmail.com

13 Intermediate Weaving Workshop from 10:00 am at the Arts Hub, 21 George Street, Latrobe. Cost \$60 pp. Bookings essential to 0419 298 254.

13 The Cream Team perform at Mackey's Royal Hotel, 161 Gilbert Street, Latrobe from 8:30 pm. Free entry.

15-21 National Volunteer Week

15-21 Early Settlers Display at the Tasmanian Family History Society front window as part of National Families Week.

18 Latrobe/Tarleton Community Information evening at the Latrobe Memorial Hall, Gilbert Street, Latrobe from 7:00 pm. Registration essential via Eventbrite. Enquiries to 6426 4444.

20 Jack Jumper Basketball Clinic at the Latrobe and Districts Youth Centre, Cotton Street, Latrobe from 1:30 pm (5-8 years olds) or 2:30 pm (9-12 years olds). Cost: \$50 per person includes a basketball. Bookings essential to <https://bit.ly/JackJumpersLatrobe>

20 Silver Lining perform at Mackey's Royal Hotel, 161 Gilbert Street, Latrobe from 8:30 pm. Free entry.

25 Australia's Biggest Morning Tea at 76 Chapel Road, Sassafras from 10:00 am. Donation \$5 pp. Please bring a plate of food to share and something for the Trade Table. There will be a raffle. RSVP by 22 May to Dianne 0409 907 281 or Annabel 0439 314 989

27 Mulled Wine in May at Shearwater Resort, 17-23 Shearwater Bvd, Shearwater from 5:30 pm. Admission by donation. No bookings required.

27 Platypus Patches Friendship Day at the Latrobe Bowls and Community Club, Victor Street, Latrobe. Enquiries to 0427 585 070.

27 Wotevas perform at Mackey's Royal Hotel, 161 Gilbert Street, Latrobe from 8:30 pm. Free entry.

28 North West Zone Dressage Competition at 291 Squeaking Point Road, Thirlstane from 8:30am until 4:00pm. Free spectator entry. Food and refreshments available. ☎ 0447 557 563

JUNE

Throughout June - "Dreams" exhibition by Isabel Farr-Aaberg at The Crowded Lounge, 129 Gilbert Street, Latrobe

3 Don't Come Monday perform at Mackey's Royal Hotel, 161 Gilbert Street, Latrobe from 8:30 pm. Free entry.

10 Matt and CJ perform at Mackey's Royal Hotel, 161 Gilbert Street, Latrobe from 8:30 pm. Free entry.

13 Latrobe Council Meeting at 170 Gilbert Street, Latrobe from 5:00pm. Attendance registration essential to 6426 4444.



27-29 Geneva Christian School presents **The Lion King** at the Latrobe Memorial Hall, Gilbert Street, Latrobe. Admission fees apply. Bookings through Eventbrite. Enquiries 6426 1053.

17 Chatter performs at Mackey's Royal Hotel, 161 Gilbert Street, Latrobe from 8:30 pm. Free entry.

18 Round 1 of the 90-Minute Series on the Wild Mersey Mountain Bike Trails (Railton) from 10:00 am. Enquiries to Mersey Mountain Bike Club - merseymtb@outlook.com.

24 Solstice Splash. Details at www.facebook.com/portsorellslsc

24 Monsters of Rock perform at Mackey's Royal Hotel, 161 Gilbert Street, Latrobe from 8:30 pm. Free entry.

25 North West Zone Dressage Competition at 291 Squeaking Point Road, Thirlstane from 8:30am until 4:00pm. Free spectator entry. Food and refreshments available. ☎ 0447 557 563

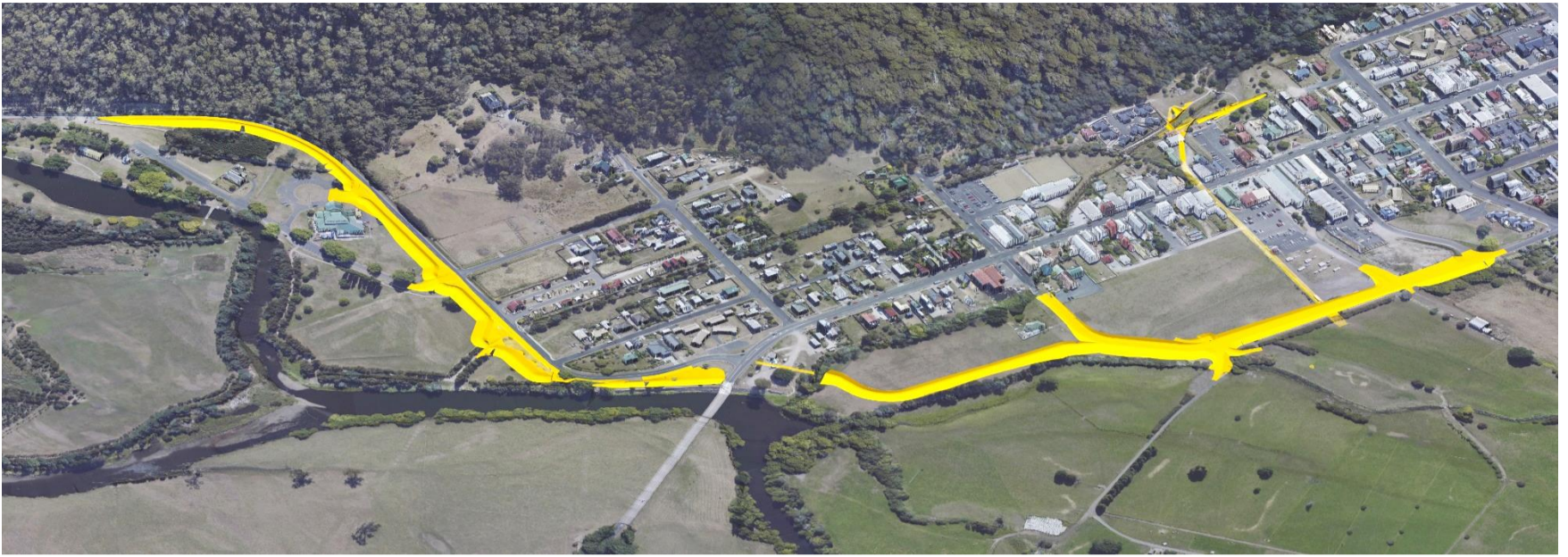
JULY

8 Devonport Stamp and Collectables Fair in the Latrobe Memorial Hall, Gilbert Street, Latrobe from 9:30 am until 2:30 pm. Includes a stamp hunt and a coin hunt with free stamp fun bags for the children. Cost: \$2 adults, kids free. Enquiries: 0407 335 487

10 Latrobe Council Meeting at 170 Gilbert Street, Latrobe from 5:00pm. Attendance registration essential to 6426 4444.

30 Round 2 of the 90-Minute Series on the Wild Mersey Mountain Bike Trails (Latrobe) from 10:00 am. Enquiries to Mersey Mountain Bike Club - merseymtb@outlook.com.

LATROBE FLOOD MITIGATION PROGRESS



The raising of Cotton Street, Latrobe to act as an earthen wall flood levee has concluded with the road reopen. As part of these works, a footpath was included on the northern side of the road, providing a safer route for pedestrians rather than mixing with traffic as was previously the case along Cotton Street. The kerb acts as a spillway at the highest point of the levee which will not erode in a flood that exceeds the design. The resulting road slope towards the outside of the corner complies with design standards for traffic at the posted urban speed limit. It is planned to install a centreline, and potentially black-on-yellow corner alignment markers depending on the level of compliance with the speed limit and user feedback.

Motorists travelling from Cotton Street are reminded to Give Way at the Victor Street bridge to all traffic coming from Gilbert Street. The Victor Street bridge is planned to be replaced with a dual lane plus footpath within the next few of years but, in the meantime, Give Way applies. BridgePro has commenced linking the Kings Park culvert to the Cotton Street discharge point which has reduced traffic on Gilbert Street to a single lane, alternating with the use of traffic lights. Several parking bays in Gilbert Street are consequently unavailable,

allowing for the single-lane flow.

A detour via Hamilton, Cotton, and Victor Streets is catering for heavy vehicles and motorists not wishing to be impacted by potential traffic delays. These works will continue throughout May and June. Simultaneously, inlet and levee work continue in the Kings Creek and Kings Park area, with adjoining walking tracks and the playground remaining closed. River Road works are continuing and should be nearing completion in June. You may have noticed that the current access to Bells Parade is lower than the adjoining levee banks. This height of the flood levee will act as a spillway if an extreme flood exceeds the design flood. The adjacent clay embankments are higher, so they are not overtopped, alleviating any wall failure. During project initiation discussions, TasWater indicated they were comfortable with the Gilbert Street sewage pump station's existing location and floor height near the Miles Ford Bridge, specifically remaining "outside" the flood-mitigated area.

TasWater representatives recently reconsidered this stance and requested to have the pump station located on the 'dry' side of the levee. This extremely late request was considered by Council in February, with Council unanimously

agreeing to accept a proposed precast wall option with a flood gate opening to protect the TasWater sewage pump station from flood inundation on the basis that all cost implications of this change would be fully borne by TasWater.

Levee works around TasWater's sewerage pump station and in the vicinity of the Latrobe Homing Club are scheduled to begin in June and at a similar time as the adjacent Kings Creek pump station is being constructed. During a flood event this pump station and associated gating prevents the Mersey River from backflowing into Kings Creek and pumps the local Kings Creek water into a flooded Mersey River.

An interim Emergency and Flood Response Plan has been developed for implementation during the construction phase, if required. Together with flood warnings and evacuations, the response plan details the temporary and longitudinal barricading along the lowest section of Gilbert Street as the remaining major source of floodwater into the lower reaches of Latrobe.

Once completed, the levee system and associated infrastructure is designed to protect property on the "dry" side of the levee from flooding, giving everybody greater time and safety to act and evacuate during a pending emergency.

LOCAL BUILDING UPDATE

67 applications comprising of 20 dwellings; 7 outbuildings; 3 commercial/industrial; 33 plumbing applications and 1 other application were received by Council in January/February inclusive with a conservative value of \$13,202,687.

DISCLAIMER - Although all care has been taken to ensure that information contained in this newsletter is correct at the time of printing, Latrobe Council gives no warranty or assurance and makes no representation as to the accuracy or reliability of any information or advice contained in the newsletter, or that it is suitable for your intended use. The publication of articles supplied by external organisations does not imply any form of endorsement by the Latrobe Council.

FUTURE EDITIONS

Article and event deadlines and distribution dates are provided to assist contributors with their forward planning

Deadline	Edition
1 Jun (Thurs)	Jul-Aug
27 Jul (Thurs)	Sept-Oct
28 Sept (Thurs)	Nov-Dec
13 Nov (Mon)	Jan-Feb '24

Articles must be submitted to the editor by the relevant deadline via email to council@latrobe.tas.gov.au or posting to P O Box 63, Latrobe, 7307.

Contributions must be relevant to the Latrobe Council area and suitable for inclusion. Submissions will be used at the discretion of the editor. Council does not pay for editorial submitted.