



# THE FUTURE OF LOCAL GOVERNMENT IN TASMANIA

The role of Local Government has changed a lot over time. This means that it is not always clear to the community when something is a job for their Council or other levels of government. For example, how many activities in the below picture do you think Local Government is responsible for?



Local Government exists under State legislation. The Local Government Board, created by the Minister for Local Government, was formed to review the fundamentals of the Local Government system: the role it should play in supporting communities, the services it should be delivering, and the more effective ways of doing so.

There are three stages to the review: Stage 1 - Community Engagement, Research, and Issues Identification (January - June 2022); Stage 2 - Options Development and Testing (July - December 2022) and Stage 3 - Reform Recommendations (January - June 2023). The Terms of Reference ask the Local Government Board to consider:

1. The future roles and functions that should be delivered by Local Government in Tasmania.
2. The organisational features and capabilities necessary to enable Local Government to effectively and sustainably deliver its future roles and functions.
3. The optimal future design to support the delivery of Local Government's proposed roles, functions, features and capabilities, individually and collectively, across representative and administrative roles and functions.
4. A practical transition plan for implementing the future design of Local Government in Tasmania, if required; and
5. Any other matters the Board considers relevant to the above.

Stage 1's Interim Report, contributed to by 1,400 community and stakeholder experiences and views, was released in July. Six 'priority reform areas' were shortlisted as potential ways to optimise the performance of Council services and functions and deliver on community needs and expectations. They are:

1. Defining Council's role in the 21<sup>st</sup> Century
2. Local representation and good governance
3. Strategic and regional capability
4. Efficient and effective infrastructure and service delivery

5. Sound and consistent planning and regulatory services to resolve the role council plays in planning.
  6. Operational sustainability to get a clear and detailed picture of the current and projected financial position of councils.
- Further submissions on the key findings and outcomes of that report closed in August. Engagement commenced for Stage 2 with a workshop involving a range of experts across Local Government, State Government, the private sector and community groups. The workshop identified a spectrum of reform options in each of these priority areas which are being explored through research and further stakeholder and community engagement during Stage 2. Those workshop attendees will meet again later in the year as part of smaller focus groups, to further refine the reform options identified through the workshop process.

## WHAT'S NEXT

With Local Government elections underway throughout October, the Local Government Board is mindful of respecting caretaker conventions and limiting its engagement with the sector during this time. Soon however, the Board will be releasing a report summarising the submissions received in response to Interim Report 1. Broader Stage 2 engagement is also well under way. In addition to further focus group meetings, the Board will soon be undertaking targeted engagement with young people and Tasmanian Aboriginal communities.

Moving forward, the Board is tasked with consolidating its research, analysis and engagement to develop some feasible reform options which will be presented to the public towards the end of the year. In exploring these options there will be further opportunities for the Board to hear from everyone so keep an eye on the website ([www.futurelocal.tas.gov.au](http://www.futurelocal.tas.gov.au)), social media ([www.facebook.com/futurelocaltas](https://www.facebook.com/futurelocaltas)) or subscribe to their newsletter ([www.futurelocal.tas.gov.au/newsletter](http://www.futurelocal.tas.gov.au/newsletter)).

Source: Future of Local Government Review

## COUNCIL'S WORKS REPORT

The following works are scheduled to be undertaken throughout the Latrobe Municipality during November and December.



### CIVIL CONSTRUCTION AND MAINTENANCE

- Roadside drains maintenance
- Rural roadside spraying and mowing
- Sealed road surface maintenance

### TOWN SERVICES

- Public amenities upgrades
- EPU Upgrade
- General building maintenance

### GREEN SPACES

- South Esplanade replace log fencing with bollards
- CBD and Parks waste/ recycling bin upgrades.
- Playground equipment maintenance and replacements
- Town drains and creeks cleaning
- General parks maintenance

Should you have any queries in relation to the above works, please do not hesitate to contact Council's Operations Manager on 6426 4453.

## AUSTRALIAN CITIZENSHIP

Becoming an Australian citizen can be a lengthy process with the last step being a Citizenship Ceremony.

Ceremonies are conducted by Local Government on behalf of the Federal Government, and they represent full and formal membership of the community of the Commonwealth of Australia.

Australian Citizenship brings responsibilities and duties; to obey the laws, to vote, to serve on a jury, and to defend Australia. But it also brings civil and social rights; the right to express your individual cultural heritage and beliefs

coupled with a responsibility to accept the rights of others to express their heritage and beliefs.

So far this year, Latrobe Council has conferred citizenship on 25 residents at five separate occasions.

To learn more about becoming an Australian Citizen please visit the Department of Home Affairs, Immigration and Citizenship website - <https://immi.homeaffairs.gov.au/> or contact 131 881.

## PUBLIC WASTE AND RECYCLING BIN ROLL OUT

Council is currently in the process of procuring a new truck with a hydraulic bin lifter to facilitate the upsize and



installation of dual waste and recycling public bins in the central business districts (CBD) and major parks of the Latrobe Council area. The bins (pictured) are now in stock,

ready for installation.

Unfortunately, increases in costs and delays with sourcing equipment for the fabrication of the truck have caused delays however its delivery is anticipated soon. This new method of waste management will improve the manual handling procedures for Council personnel. Upon the arrival of the truck, the new bins will replace existing bins in their vicinity and will be spaced 50m apart. CBD areas and major parks will be serviced with the new bins, with minor parks and other areas retaining their current bins.

The bin roll-out is due to occur during November.

## OPEN SPACE, SPORT AND RECREATION PLAN

In partnership with the Kentish Council, Latrobe Council has engaged Otium Planning Group to develop an Open Space, Sport and Recreation Plan.

The plan will provide direction to Council on the future development and management of open spaces, recreational areas and sporting facilities in the municipality.

To assist in formulating the Plan, Otium's team will engage with stakeholders and provide opportunities for input from the community.

If you would like more information about the Plan, or would like to be added to the mailing list, please contact Latrobe Council on 6426 4444 or email [council@latrobe.tas.gov.au](mailto:council@latrobe.tas.gov.au)

## MEMORIAL GARDENS AT LATROBE CEMETERY

The Memorial Gardens at the Latrobe Cemetery are a new option available as a lasting tribute of remembrance to those you love who have passed.

It provides a permanent, secure setting for the placement of ashes and for their life to be commemorated as well as an historical and genealogical record for future generations.

It provides a physical place where family and friends can gather to celebrate a life, mourn their loss or simply remember.

If you wish to reserve a space or require further information, a form is available on Council's website or contact Customer Service personnel on 03 6426 4444.

## YOUR ELECTED REPRESENTATIVES

Due to the 2022 Local Government Elections, the new Councillors will be sworn in prior to the 14 November Council Meeting.

## WHO WILL YOU NOMINATE?

Nominations are open for the 2023 Latrobe Municipality Australia Day Awards, which celebrate the achievements and contributions of highly respected residents who contribute to the vibrancy of the Latrobe Council area.



*Pictured are the 2022 recipients - Latrobe Senior Citizens Club Executive; Rod Bramich on behalf of the Port Sorell Heritage Trail; and Arabella Gillies (Young Citizen)*

They inspire us through their achievements and challenge us to make our own contribution to create a better municipality.

There are many people in our community that have made a difference and inspire and strengthen our community.

These are normally people that do not do what they do for recognition but because they want to contribute to the betterment of their community.

Categories include Citizen of the Year, Young Citizen of the Year (aged 15-30 years) and Community Event of the Year.

Not only will their story celebrate their achievement/s but it may inspire others. Nomination forms are available from the Latrobe Council office or online at [www.latrobe.tas.gov.au/community/austdayawards](http://www.latrobe.tas.gov.au/community/austdayawards), and close on 1 December.



# LATROBE FLOOD MITIGATION PROJECT UPDATE

If you've been in Latrobe recently it'd be hard to miss the flood mitigation works underway at various sites across the lower regions of the town including the Station Square Carpark, King Park Carpark, Victor Street, near the exit to Bells Parade onto River Road, River Road, Atkinson Park and Cotton Street.

Disruption has unfortunately been inevitable, including notably the TasNetworks relocation of power services across Gilbert Street, the works in the Station Square carpark and Cotton Street. Please be assured all contractors are aware of the difficulties of working in the middle of such a vibrant and busy town and are making all reasonable efforts to keep disruptions to a minimum.

50% of the full 330m long 4.5m wide and 2.5m high concrete box culvert has been installed from Cotton Street to Kobie Lane.

Cotton/Victor Street continues to be closed as works continue to reform the road surface as the flood levee. The levee in this section continues through to where Kings Creek joins the Mersey River.

The section from Kobie Lane to Gilbert Street will be installed and the laneway between Subway and the Latrobe Newsagency will be closed to through traffic during November and December.

Construction on the inlet structure at Kings Park will simultaneously commence in November. There will be some impact to the parking capacity at the rear of the Kings Park carpark and the recreation area in Kings Park. During these works, the footpath that meanders alongside Kings Creek and links to Sheehan Walk will be closed.

A concrete retaining wall has been installed between Atkinson Park and the Police Paddock, along River Road, Latrobe. The top of this wall will be the same height as the top of the River Road earthen levee bank. These works will commence in December and continue into the new year.

The section from the Kings Park inlet to Gilbert Street will be installed in December and January and access to Sheehan Memorial and nearby walking tracks will be temporarily closed.

The missing link across Gilbert Street will commence early in the new year but not until Cotton/Victor Street has reopened to traffic. To maintain traffic movements, Gilbert Street will be crossed in two stages - completing the culvert to the centre of the road and then transferring traffic to the other side for the completion of the other side.

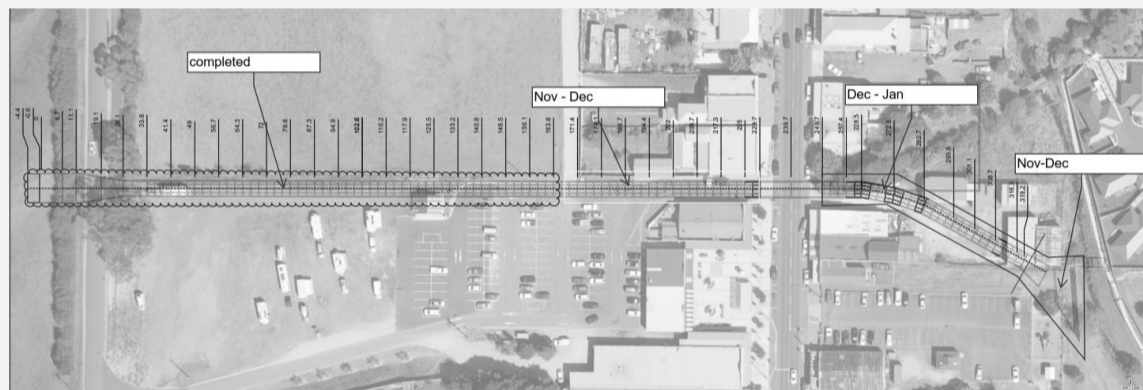
The work site is part habitat to the endangered Central North Burrowing Crayfish. During September the first unexpected recovery and translocation of crayfish to the formed offset areas occurred.



Information displays have been installed and are being kept updated as the project progresses in Station Square, Kings Park and River Road.

## Works and timeframes summarised

Kobie Lane-Cotton Street culvert	Completed
Cotton/Victor Street levee	current-Dec
Kobie Lane-Gilbert St culvert	Nov-Dec
Kings Creek culvert inlet (Kings Park)	Nov-Dec
Kings Creek-Gilbert St culvert	Dec-Jan
River Road, Latrobe levee	from Dec
Gilbert Street culvert	from Jan 2023



## FRIENDS OF THE RUBICON ESTUARY PROPOSAL

Council is seeking an agreed way to work with community volunteers on shared goals and complementary activities, such as enhancing natural values of the Rubicon Estuary through revegetation projects delivered by the community under the banner of 'Friends of the Estuary'.

There are four key goals to this concept -

- The establishment of shared values to work together and cooperate in a spirit of mutual understanding and to develop a relationship of goodwill and friendship.
- The participants will share information with each other to help promote mutual understanding.
- The participants will seek to use a highly collaborative approach, working across the community to invite input and participation from schools, social support groups, and connecting with other such community partnerships to give and receive knowledge.
- The participants will encourage and value contributions of all participants, respectfully, in the spirit of best use of

public funds and resources.

The work of 'Friends of the Estuary' will focus on revegetation activities to improve the natural values of the Rubicon Estuary with a priority on the Hawley Foreshore, including Rice Grass management.



Latrobe Council will provide funding and ongoing support in conjunction with other spheres of government.

This new group is proposed to be trialled for one (1) year and then be reviewed. Community input on this concept is invited by 12 December to council@latrobe.tas.gov.au. The draft document is available on Council's website - www.latrobe.tas.gov.au

## FACTOR THE TRACTOR

It's approaching the harvesting season in much of the North West Coast, and this means slow-moving tractors, crop harvesters and more heavy machinery on our roads, particularly in rural areas. Latrobe has significant areas of primary production farmland that see high volumes of farm machinery on the roadways.

Farmers play a vital role in our community; not only do they grow the food we eat, but chances are that they are our friends or family.

So, when you're in driving through rural areas, please slow down and always 'Factor the Tractor!'



## REGISTER YOUR BURNS

Landholders are urged by the Tasmania Fire Service (TFS) to register any burn-offs they are conducting on their property. Registering a burn is not a difficult task, nor is it designed to be a barrier to landholders conducting their bushfire mitigation activities.

The benefit of registering a burn is that the Tasmanian Fire Service (TFS) is aware of any fires and the risk of an unwanted callout from the local brigade is reduced. If you are planning to conduct a hazard reduction burn, please check fire restrictions and register your burn with TFS on 1800 000 699.

For more information about preparing your property, visit [www.fire.tas.gov.au](http://www.fire.tas.gov.au)

## NATIONAL HAZARD WARNING

A nationwide multi-hazard approach is being adopted for the implementation of the five hazards - bushfire, cyclone, severe weather/storm, flood and extreme heat - as part of Australia's warning system. For Tasmania, the bushfire system was implemented in September 2021 with the severe weather/storm warning system to be effected in 2023. The Australia warning systems is about consistent names, icons, colours and symbols.



Within Tasmania, TasALERT is the primary source of such warnings, both through its website - [tasALERT.com](http://tasALERT.com) - and <https://www.facebook.com/tasalert>. Make the time today to save these sites to your favourites so you always know what to do before, during and after an emergency.

## PLANNING AN EVENT?

Local councils are a useful source of information when planning a community event and can ensure you are aware of any approvals or conditions required and promote your event through event calendars or similar.

## SCHOOL'S TREE PLANTING DAY

National Tree Day, held annually on the last Sunday in July, is an initiative by Planet Ark to promote environmental awareness, and actioning community tree plantings around Australia. Since its conception in 1996, 26 million trees have been planted on National Tree Day. This year Latrobe Council partnered with Port Sorell Primary School to plant eight Sheoaks in Panatana Family Park at Port Sorell as part of School's Tree Planting Day.

Councillor Sommer Metske, on behalf of Latrobe Council's Tree Planting Committee, organised the event to provide

Council can provide resources on different aspects of planning and holding an event and while some information may be specific to a particular area, other information may have a broader application.

For more information, phone Latrobe Council on 6426 4444.

## EVENT READY GRANT

The Event Ready Grant Program provides funding up to \$5,000 for event organisers to help them develop and implement COVID-19 safe practices. They are not intended to provide general support for an event or organisation though.

Guidelines for the program are available at <https://bit.ly/EventReadyGrant>.

## HEALTHY TASMANIA GRANT

The Healthy Tasmania Fund is a grants program for health and wellbeing in Tasmania with the new-look Fund now even easier to apply for. Along with support to help you apply and develop your ideas, it also brings people together to share what they are doing so we can learn as we go and be part of a broader, more coordinated funding approach.

The Fund has \$8 million of funding over four years with four grant streams:

- Step Forward - grants up to \$5,000
- Healthy Focus - grants from \$20,000 to \$100,000
- Lift Local - grants of \$20,000 for councils
- Healthy Together - grants of \$300,000

To find out more, go online to [health.tas.gov.au/healthytasfund](http://health.tas.gov.au/healthytasfund), email [ahealthytasmania@health.tas.gov.au](mailto:ahealthytasmania@health.tas.gov.au), connect via Facebook or phone 6166 1691.

## TOP 10 GRANT WRITING TIPS

Grant writing is no easy feat but before you abandon your next grant application, consider these handy tips from The Grants Hub on how to write a grant application. They'll not only prepare you for what's expected but will also help you craft a high-quality grant submission, capable of winning a great opportunity.

1. Determine why you require funding
2. Ensure eligibility

3. Rally community and legitimate support
4. Research the funding body and previous grant recipients
5. Be proactive about grants
6. Set some realistic goals and ideas for your application
7. A good budget always helps
8. Write the proposal with life and passion
9. Revise, revise again and revise with friends
10. Submit ahead of time

By following these tips on how to write a grant application you'll be ready for your next grant submission.

## BASS HIGHWAY CORRIDOR STRATEGY

The Department of State Growth has been working on a Corridor Strategy for the Bass Highway between Launceston and Devonport to:

- improve safety outcomes for all users;
- improve efficiency, reliability and the resilience of road network; and
- support economic growth and development.

Public consultation throughout 2021 recorded consistently expressed concerns for road user safety and travel efficiency along the whole highway. These concerns generally focussed on factors such as:

- a lack of overtaking opportunities leading to dangerous overtaking actions and congestion.
- near misses and congestion at junctions with private properties and towns; and
- a lack of separation between lanes running in opposite directions causing confusion and near misses.

Community feedback also featured a serious frustration about road durability and maintenance issues due to poor road surface conditions at specific points along the highway north of Deloraine. Since then, development of the Corridor Strategy has progressed and is nearing finalisation which will lead into prioritised works over the next decade.

an opportunity for students to learn about Council's role in looking after our trees and how they too can play a role in enhancing our Green Spaces. Approximately 30 students and teachers from Port Sorell Primary School's Green Team attended Panatana Family Park on a beautiful winter's day and assisted in planting, staking, and unofficially naming the trees - Gary, Larry, Barry, Simon and a few more.

Latrobe Council's Tree Committee hopes to extend the day in 2023 to include other schools within the Latrobe Council area.



*Pictured: Students of Port Sorell Primary School planting Larry the tree.*

# CAMP BANKSIA PLAY SPACE

Play spaces are varied in our communities. At Port Sorell, the redevelopment of Camp Banksia will include an all ages play space that reflects its location and provides a point of difference with a seaside theme underlying the concept.

The play space consists of two main play spaces: a sand pit area and a nature-based play space.

Equipment has been carefully chosen for its multiplicity of play opportunities and fostering unstructured play. Each play element has both physical activities and a social aspect, interaction and inclusivity is woven throughout.

## SAND PIT

This area is focused on the younger age group with the activities based on a beach theme and organised around a sand pit.

The play activities include role play, climbing, sliding, swinging, rocking, spinning, theme and imaginative play. Being surrounded by a multi coloured forecourt will allow for prams and strollers to get closer to the action. Within this forecourt, three-dimensional

seals laze in the sun as well as a cringe of crabs scuttling across the sand, a double see saw and carousel and a beach hut are here also.

The sand pit is defined with play logs and rocks with four beach entries.

There is a central climber within the sand pit accessed across the sand seas via a series of play logs and rocks.

Presiding over the sand pit is a lighthouse with twin slides.

On the other side is a ship, wrecked on the rocks being chased by pirates on rafts. The ships passengers can escape up the steps to Banksia Bluff and across suspension bridges to the lighthouse and the slides. In a bay to the north is a three-bay swing.

Out the back of the sand pit and halfway to the Nature Play Area is a twin Zip Line, this has an accessible starting mound



connected with a path to the end.

There is free space around this element, and it is immediately adjacent to the shelter and toilet. This area is accessed either via a tunnel or a longer path, which also gives access to a secret walk thru the existing vegetation.

## NATURE PLAY

This space has three elements: The Logs, The Tunnels and The Whalebones.

The Logs is a climbing, scrambling, balancing element loosely representing a log pile, as seen on many of the coastal river mouths.

The logs are arranged in a sequence of challenges until you get to a junction where you can take the high road (a series of climbing elements) or the low road (via a criss cross of logs and a spider's web) to be able to exit by a track glide.

The Tunnels is a collection of precast concrete items arranged to hide a valley in which there is a climbing frame. Each tunnel is different.

Access to the valley is via one of the three tunnels or over the mounds.

Once inside the valley there is a central net structure. This climbing element has vertical, horizontal and sloping nets.

Around the sides of the valley are arranged several climbing handholds and ropes.

The Whalebones plays with the notion of a Southern Right Whale skeleton emerging from the sand.

The ribs of the carcass form a structure for a variety of climbing elements and nets.

This element provides for physical activity thru upper body strength, balance and co-ordination and social opportunities in and on top of the element.

## NOMINATE FOR BANKSIA FACILITIES COMMITTEE

The Banksia Facilities Management Committee is a special committee of Latrobe Council that oversees the continual improvement and management of Camp Banksia and the Banksia Centre. Individuals are currently sought to nominate as a community or user group representative for the Committee. The role of committee members is to:

- consult with the community (or user group that they represent) on the continual improvement of the Banksia Facilities,
- attend meetings and actively participate in discussion,
- contribute to the formation of recommendations for Latrobe Council's consideration.

The committee provides a valuable conduit to consulting with the broader community. If you are interested in filling any of these vacancies, phone Council on 6426 4444 or email [council@latrobe.tas.gov.au](mailto:council@latrobe.tas.gov.au) for details of the nomination process. Nominations close on 30 November.

## ARE YOU A CARING NEIGHBOUR?

Do you know your neighbours well enough to have a chat rather than wave from a distance? While it may not take much out of your day, conversations build social connectedness, a sense of belonging to a group, family, or community, which is an integral component of good health and well-being.

You don't need to live in each other's pocket but a genuine "how are you going" and listening and responding to the answer doesn't take much out of your day. Establishing this connection could give your neighbours the confidence to ask for help when needed or seek guidance based on your experience and knowledge.

How connected are you to your community? Can you recommend local groups? Do you know where to access services?

Some handy resources are Latrobe Council's online Community Service Directory ([www.latrobe.tas.gov.au](http://www.latrobe.tas.gov.au)) which is regularly updated and the statewide website [www.findhelptas.org.au](http://www.findhelptas.org.au)

## WALK YOURSELF HAPPY

There's a reason why walking is one of the most popular forms of activity in Australia. You don't need any fancy equipment, you can do it when and where it suits you, you can do it with friends, family, work colleagues, pets, or by yourself, and best of all, it's FREE.

Walking an average of 30 minutes or more a day can prevent and improve a range of health conditions, it has no side effects, and doesn't need a prescription.

Regular physical activity can help reduce your risk of heart disease and stroke; manage weight, blood pressure and blood cholesterol; prevent and control diabetes; reduce your risk of developing some cancers; maintain bone density, reducing risk of osteoporosis and fractures; improve balance and coordination, reducing the risk of falls and improve your mood and sleep, which can lead to better mental health.

To learn how the Heart Foundation Walking Program can support you go online to [walking.heartfoundation.org.au](http://walking.heartfoundation.org.au) or phone 0434 097 929.

# BUSINESS INFORMATION AND HAPPENINGS

## LATROBE NEWSAGENCY

The passing of an era has ended for the Latrobe Newsagency as we say happy retirement and finally some sleep ins to Ray and Natilie Callander.

While Myles, Georgie, Jeanice and Angela will continue to be familiar faces providing great in store service, the business is now under the management of Ranjeet Kumar.

## HALCYON WELLNESS AND GIFTS

The closure of Sorella Gifts and Accessories at 164 Gilbert Street, Latrobe has seen the establishment of Halcyon Wellness and Gifts.

Under the ownership of Jan and Neil Dixon, Halcyon Wellness and Gifts offers a wide range of holistic health and relaxation services, as well as a beautiful gift shop filled with wellness gifts and products.

## LATROBE MUM A BUSINESS FINALIST

Filipa Bellette, co-founder of Latrobe's health practice Chris and Filly Functional Medicine, was a recent finalist in the national Ausmumpreneur Awards.



The AusMumpreneur Awards, presented by The Women's Business School, celebrate and recognise Australian Mums in business achieving outstanding success in areas such as business excellence, customer service and health innovation as

## NORTH WEST TASMANIAN LILIUM SHOW SCHEDULED

The North-West Tasmanian Lilium Society moved its annual show to the Latrobe Memorial Hall in 2015, after 25 years at other venues.

Attendances doubled in the first year and have been most encouraging since then. Covid-19 restrictions and the ensuing reluctance of patrons to venture out to public events have taken their toll over the past couple of years and resulted in the cancellation of the 2022 Latrobe Lilium Show.

Good news though - the North West Lilium Show is returning to Latrobe on 28-

they balance motherhood and business in a way that suits their life and family.

There are many benefits to balancing business and motherhood as Filipa Bellette explains, "My health practice, Chris and Filly Functional Medicine, is specifically designed to help high-achieving parents juggling all the things to not only heal from body burnout, but to also create a life that supports health, happiness and a connection to oneself and family. I've achieved this in my own life, and I believe running a business has enabled me to create a lifestyle supportive of health and motherhood."

Filipa was delighted to be named as a finalist and is proud of her achievements, particularly during the challenging times over the past two years of the pandemic. The awards nomination was a testament to Filipa's purpose, and she encourages other business owners to enter business awards. "It's a great way to have your work recognised publicly, and it also helps to inspire your team and clients/customers about your business vision."

## LOCAL BUSINESS SUPPORT



The Kentish and Latrobe Independent Business Association (KaLIBA) supports every business across the Kentish and Latrobe Municipalities with free and paid memberships, from individual farmers, retailers, trades and new businesses, right up to our largest employers.

They offer you the opportunity to be successful by providing business support, expert advice, education, promotion, lobbying, networking, development projects, and mentoring.

Did you know that KaLIBA provide an online business directory? While free to be included, it is also a great tool to buy and sell locally.

KaLIBA support your access to free one-on-one professional advisors who are ready to help by phone or visit you on any business topic including Digital marketing and cyber security; Staff, hiring and disputes; Wages, awards and conditions;

29 January and they look forward to welcoming everyone to what will be a feast for the senses through amazing floral art; bulbs, plants, flowers and seeds for sale. There will be demonstrations as well as expert advice.

Morning and afternoon teas as well as light lunches will also be available.

Doors open to the public from 1:00pm until 4:00pm on the Saturday and from 10:00am until 4:00 pm on Sunday with flowers auctioned on Sunday at 4:00pm.

To learn more, please contact Neil on 6435 1298.

Business plans and risk analysis; Red tape and regulatory issues as well as Mental health and resilience. KaLIBA is here for you.

To contact KaLIBA to arrange a discussion with their executive or a local board member phone 0402 636 769 or email [contactus@KaLIBA.org.au](mailto:contactus@KaLIBA.org.au).

## 10 RULES FOR PROTECTING YOUR BUSINESS

Cybersecurity might seem like it is all about hackers taking down banks and big corporates, but are you prepared for your Point of Sale (PoS) to go down, your email lists to be spammed or your critical business as usual to be frozen.

Cybersecurity is for all businesses, and it can be a simple checklist to ensure that you are alert but not alarmed with a good contingency plan. These 10 key actions can help you to mitigate risk to your business and be able to focus on delivering your best products and services to your customers.

1. Don't download files or click on links from unknown senders
2. Check your firewalls are up to date on all machines
3. Use current virus protection on all devices and update regularly
4. Insist upon strong passwords
5. Update your operating systems regularly
6. Use a virtual private network (VPN) which provides an encrypted connection so data being shared can't be seen by a third party
7. Multi-factor or two-factor identification on all devices and accounts where offered
8. Make sure mobile devices used for work are secure, don't store important passwords
9. Have a disaster recovery plan
10. Never send sensitive data unencrypted and unsecured via email

To view the complete presentation, go online to <https://digitalready.tas.gov.au/resources/presentations/cybersecurity-update-presentation/>

## LOCAL PLAYGROUP OPENS

After a long break due to Covid-19 regulations, the Latrobe Community Playgroup has commenced at the Latrobe Baptist Church, 123 Gilbert Street, Latrobe.

All pre-school children are welcome to attend this playgroup session, along with a carer, which is held from 10:00am until 12 noon each Friday during school terms. A wide variety of activities and play items are available. Cost is just \$2.

For more information contact Lorraine (0401 266 302) or Nelleka (0405 464 023).



## PLANTS AND PROSE

If you are interested in pressed plant species and prose poetry then the book “*pressed specimens: Prose Poems from the Medicinal Plant Herbarium, Southern Cross University*” by Shearwater resident, Dr Moya Costello (PhD), is a must have.



Dr Costello was formerly a full-time, continuing creative-writing lecturer at Southern Cross University (SCU) with this publication long listed for the Laurence Sterne Award from the press.

In her review of the book, Anne Elvey, poet and Adjunct Research Professor, School of Languages, Literatures, Cultures and linguistics at Monash University stated “Alongside images of plants that surrendered themselves to their colonial flattening, Moya Costello’s poetry deftly evokes their lives and liveliness. In the traditions of Peter Larkin and Louise Crisp, and with echoes of Gerard Manley Hopkins, Costello creates a lush language,

## GOING FOR GOOD, BETTER, BEST WITH RECYCLING

To avoid contamination in at least 90% of all kerbside recycling bins in North West Tasmania, thousands of randomly selected bins across several Council areas will be placed under the spotlight over the next three months.

This will be the tenth year that this survey has been conducted by the Cradle Coast Waste Management Group (CCWMG) and



melding close observation with inventive conjunctions of imagery, in relationship with the plants themselves.”

For more information or to purchase your own copy, go to <https://bit.ly/MoyaCostello>

## MEMORIAL BRICKS

### AVAILABLE FROM COUNCIL

Stamped memorial bricks for installation at the Port Sorell Defence Memorial are still able to be purchased.

With the closure of Bendigo Bank at Port Sorell, Latrobe Council has agreed to manage this process on behalf of the Port Sorell Lions Club.

When there is the minimum quantity to enable the bricks to be made, they will be ordered and installed by the Club.

## SAUSAGES, CRAFT AND SCIENCE



The Rotary Club of Latrobe have a busy November and December planned, starting with a Sausage Sizzle at Bunnings on

19 November. What do you prefer - your onion on top or under the sausage?

From 4-7 November, Club members are assisting with the Tasmanian Craft Fair at Deloraine. While a busy time, it is an opportunity to chat with many people. Local High School students will benefit from the Rotary Club of Latrobe’s support with attendance at the Santos Science Experience in Hobart.

The club’s Annual General Meeting will be held in December with the new appointees taking up their role next July.

This allows the current incumbent to mentor the incoming person in this role and assists with a smooth transition.

If you want to help make a difference in your community, contact the club about joining as they are always looking for community minded people. The club meet monthly, on the 1<sup>st</sup> and 3<sup>rd</sup> Wednesday, at Hamilton Hub. If you want to know more, please call Secretary John (0457 883 006) or Membership Director Peter (0404 871 137).

## KINSHIP CARER INPUT SOUGHT

Are you raising a relative’s child or children? If so, Mission Australia would love to hear from you via their first comprehensive survey of Kinship Carers along the North West and West Coast of Tasmania?

This survey will take between 5-10 minutes to complete and is focussed on capturing the joys and challenges for Kinship Carers.

The results will enable Mission Australia to advocate for better services for amazing Tasmanian families like yours.

The survey is accessible at <https://bit.ly/KinshipCarerSurvey> and closes on 31 January 2023.

## STAMP AND COLLECTABLES FAIR

The Devonport Stamp and Collectables Club will be holding a Fair on 12 November at the Latrobe Memorial Hall, Gilbert Street, Latrobe from 9.30am until 2.30pm. Admission is \$2.00 for adults and free for children.

Tasmanian and interstate dealers will be in attendance with items for sale and to answer all your questions on stamps, coins, militaria, badges, medals and lots more. There will also be a Stamp Hunt and free philatelic show bags available for the kids. Enquiries: 0407 335 487.

assists to improve public education on recycling contamination, and increase the recovery of valuable, recycling resources.

Veronica Schilling, the Cradle Coast Waste Authority CEO, says that recycling contamination is an issue whenever there is co-mingled recycling collection.

Co-mingled recycling is where recyclable items are not separated, but instead placed in one bin that is then sorted at the recycling facility. This type of recycling is the most convenient option for residents, because it collects most common household recyclable waste in the one bin: paper, cardboard, hard plastic, bottles and tubs, steel cans, aluminium cans, glass bottles and jars. Anything outside of these materials is classed as contamination. It’s costly to remove and makes it less likely that good recyclables can be re-used.

For the past nine years, North West Coast residents have achieved between 80-85% near zero contamination. While a terrific result, it is hoped to reach 90% this year. Your help is needed to achieve this target!

The most common causes of recycling contamination are recycling items packed inside plastic bags and loose soft plastic items such as shopping bags, food wrappers and cling wrap.

Please place recycling items loosely into kerbside bins, and not inside a garbage or shopping bag.

While soft plastics can’t be recycled from your kerbside bin (bags and food wrappers included) - you can still recycle these in the REDCycle bins at Coles and Woolworths supermarkets.

So be a good sort! Help us go for good, better and best in kerbside recycling!

For more information on kerbside recycling, go to <https://rethinkwaste.com.au/>

## STEPPING INTO THE DIGITAL ERA

The Mersey Valley Ladies Probus Club Inc celebrated its 35<sup>th</sup> Anniversary in October.

Formed in October 1987, it was the first ladies Probus Club on the North West Coast of Tasmania and began with a membership of twenty. Today's membership is 47.

Probus is open to retired or semi-retired people to provide an avenue to meet and expand their interests. In conjunction with their monthly gathering (from 10:00am on the 4<sup>th</sup> Monday of each month - February to November - at Hamilton Hub, Latrobe), activities include inspiring guest speakers, social bus trips, indulgent coffee mornings, delectable dining out, and enthusiastic book groups, to name a few.

Earlier this year the Club received a generous grant from Latrobe Council to purchase their own laptop which will help to keep all records together and encourage members to become digitally confident, to keep up with changing times and better connect members with family and friends.



The Club is most grateful to Latrobe Council for this grant and appreciative of the assistance of the Latrobe Rotary Club for many years.

If you are interested in coming along to a meeting, contact Secretary Lesley (0407 429 025) or email [merseyvalleyprobus@gmail.com](mailto:merseyvalleyprobus@gmail.com).

### TIP SHOP EXPANSION



The Lions Club of Port Sorell are excited with the possibility of further encouraging recycling in the community through the expansion of the Tip

Shop at the Port Sorell Waste Transfer Station, that members operate voluntarily. The proposal includes an under-cover area which has the potential to encourage the recycling of larger items. Not only is this a recycling service, but the funds enable the club to deliver services benefitting the community.

Club members are continuing their raffle ticket sales at Shearwater Resort with the funds raised through to December being distributed to support diabetes charities. Along with the Port Sorell Fire Brigade, Lions will assist with cooking a barbecue for attendees at the Reel Keen Fishing Competition at Port Sorell.

The Carols by Candlelight event on 11 December at the Port Sorell Primary School is the club's last event in December. Club members will be doing what they do best on that occasion - loudly and joyously singing Christmas Carols as they cook a bounty of delectable snags.

### SACRED CIRCLE DANCING

Sacred Circle Dancing has returned to Bells Parade, Latrobe on the 2<sup>nd</sup> and 4<sup>th</sup> Monday of each month, including Public Holidays, and continues through until the end of March.

Sacred Circle Dancing is a collective dance experience that draws from ancient and traditional folk dances, many from Eastern Europe and the Balkans.

Cost is \$10 per person.

For more information, contact Sacred Circle Dance - NW Coast via Facebook.

### CROQUET INTEREST

The Latrobe Croquet Club held its Annual General Meeting in August with Chris West elected President, Penny Anderson - Secretary and John Sumpton - Treasurer. The club recently hosted students from Latrobe High School with two groups of fifteen learning the game and becoming quite competitive. It is very encouraging to see them really enjoying croquet.



The National Championships were played in Adelaide in September with Patsy Paine from the Latrobe Croquet Club selected to play for the Tasmanian team. This competition is exceptionally fierce with the level of play at a much higher standard than typically played in Tasmania. It was great to see the Tasmanian team do well. Croquet can be played at any level, either competitively or socially, so why not come and give it a go. The first three introductory sessions are free, and all equipment is supplied. Phone Chris on 0499 990239 if you would like to try.

### LATROBE CHAT 'N CHOOSE

Latrobe Chat 'n Choose is held at the Latrobe Baptist Church, 123 Gilbert Street, Latrobe each Wednesday (during school terms) from 10:00am until midday.

A wide variety of craft is offered, including knitting, crochet, hardanger, card making, as well as woodturning.

Cost is just \$2 which includes morning tea. For information contact Nelleka (0405 464 023) or Lorraine (0401 266 302).

### 90 AND STILL PLAYING

Since 1950, Mrs Patricia Stewart of Thirlstane has played the organ at St George's Church, Newground. She first stepped into this role as Newground didn't have a reliable organist at the time.



Historically, Mrs Stewart started playing the organ during the reign of King George VI, continued throughout the whole of Queen Elizabeth II's reign and is now under her third monarchy.

Her passion for the organ hasn't been restricted to St George's though. Mrs Stewart can state that she has played the organ at all churches in the Parish. This huge commitment reached a milestone last month when Mrs Stewart turned 90. Congratulations Mrs Stewart.

### RUBICON RIVER ARTS



Rubicon River Arts

Serving the Latrobe Council area, Rubicon River Arts welcomes members from the wider North West Region.

Joining Rubicon River

Arts provides an opportunity for you to explore your creativity with like-minded persons. It also provides opportunities to display your art at the Latrobe Arts Hub and participate in or host workshops and other learning experiences.

From 5-7 November, Rubicon River Arts will be open and have a table of specials for sale at the Latrobe Arts Hub and gallery, an opportunity to stock up for Christmas.



Rubicon River Arts meet on the first Saturday of the month and alternates business and social meetings.

For information about Rubicon River Arts, visit the Latrobe Arts Hub, co-located with the Latrobe Visitor Information Centre, 21 George St. Latrobe, just behind the Latrobe Memorial Hall, go online to [www.facebook.com/rubicon.river.arts](http://www.facebook.com/rubicon.river.arts) or [rubicon-river-arts@googlegroups.com](mailto:rubicon-river-arts@googlegroups.com)

### WHEN VIC, DOUG AND JOE MEET QUEEN ELIZABETH II

Woodchopping events were a feature of all Royal tours of Australia. At the Australian Axeman's Hall of Fame at Bells Parade, Latrobe, a trophy axe from the 1954 Royal Tour is one of the featured exhibits.

It was made by Hytest Axe and Tool Company Pty Ltd as the prize for an invitation tree felling exhibition. This event was held at Dubbo, NSW, on 10 February 1954 in front of Queen Elizabeth II and Prince Phillip.



One newspaper reported that *"the Queen sat tensely in the warm sunshine, gripped by the thrill of such an event."*

The winner was Queensland champion axeman and Axeman's Hall of Fame Legend, Vic Summers. So popular was the event that it was filmed and sent by plane to be shown on 108 television stations in the USA.

In 1966 an Australian touring team gave woodchopping demonstrations and competed in Britain, again in front of Queen Elizabeth II. The team included Tasmanians Doug Youd, Ron Sherriff and Queensland's Elwin Griggs. A Victorian, Joe Jelleff, was the team manager.

Joe had served in the Royal Australian Engineers Forestry Company in Scotland and England during the Second World War and wanted to display the unique and thrilling sport of woodchopping to the British public.

### NO TESTS, JUST FUN

The University of the Third Age (U3A) is an international movement dedicated to the social, recreational, creative and educational enrichment of people in their 'third age' of life.

U3A Port Sorell members volunteer to share their interests, enthusiasm, and knowledge through both short and ongoing courses. There are no tests, just fun and companionship.

If you like learning in a relaxed, friendly environment, why not consider U3A Port Sorell? You might like to try Mature Movers, Pickleball, Photography, Walking Netball, Reading Food Labels, Conversations, Fun with Worms and Friday Flicks to name a few.

Phone 0499 162 539 during office hours 10:00 am to 12 noon or go online to [www.portsorellu3a.org.au](http://www.portsorellu3a.org.au) for details.

### ACACIA PLANTED FOR PLATINUM JUBILEE

It was a case of all hands-on deck for the planting of two special Wattle trees at the Port Sorell Surf Club in September.

Enthusiastic Port Sorell Garden Club members and canine support team, ably assisted by Latrobe Council's personnel, planted an Acacia Bailyana Purpuria and an Acacia Floribunda.

These native trees were planted in recognition of Wattle Day on 1 September, and in commemoration of Queen Elizabeth II's Platinum Jubilee, celebrating her 70 years on the throne. As we watch the trees grow, we will be able to celebrate and remember the Queen's amazing life and times.

Thank you to Leah Revell for proposing and urging the members to carry out this project.

For more information about the Port Sorell Garden Club and their activities, simply email [psgardenclub18@gmail.com](mailto:psgardenclub18@gmail.com).



### A SOLDIERS MEMORIAL

The Tasmanian Family History Society Inc Mersey Branch at Latrobe will commemorate Remembrance Day with a pictorial display of soldiers and nurses who served in WW1 in the windows of the family history library, located down the laneway beside the Latrobe Library in Gilbert Street, Latrobe. These photos are part of a collection gathered by Mersey Branch members in 2018 to commemorate the Centenary of the WW1 Armistice with information continually added.

The Mersey Branch recently received an anonymous donation of old plans of the Latrobe Cemetery. These maps are on display at the family history library and add to the Latrobe Cemetery publication. Other information about Latrobe and beyond at the family history library includes details of smaller cemeteries in

the area, early Church records, land valuations, local family histories.

The Mersey Branch will be conducting a raffle leading into Christmas. Please look out for members selling tickets in town or they can be purchased from the Mersey Branch on the days they are open.

The Branch will be from 9 December, re-opening on 11 January.

For more information and bookings, please contact the Secretary, Sue-Ellen 6428 6328 or Ros on 0476 008 531.

### RUBICON PROBUS CLUB INC

The Rubicon Probus Club offers friendship and fun to retired or semi-retired men and women through social outings, trips and many interesting speakers.

Recent activities included a visit to "Simon Martin Whips and Leathercraft" and manning an information stall at the Port Sorell Spring Fair. Net up is the Christmas Lunch at "Tranquilles".

Probus is not a fundraising group and is open to membership beyond the Port Sorell area. There is a joining fee of \$10, annual subscription of \$20 with the monthly attendance fee is \$5 including morning tea and lucky door prizes.

Meetings are held on the 4<sup>th</sup> Wednesday each month at 10:00am at the Port Sorell Golf Club. For more information contact President Lynette (0409 965 341) or Secretary Margaret (0427 261 244).

### LATROBE MEN'S SHED

The Latrobe Men's Shed in King's Lane, Latrobe is held every Tuesday and Friday from 9:00am until 12 noon.

The Latrobe Men's Shed provides an opportunity for you to work on your own projects as well as assist with a wide variety of community projects, using a selection of well-maintained tools and equipment. All men are welcome, with a barbeque following the Friday event. Annual Membership is \$20 with a \$3 charge each week for morning tea and the BBQ.

For more information contact the Secretary, Ralph (0405 464 023).

### PORT SORELL TENNIS CLUB

The pressure clean of the Port Sorell Tennis courts have come up a treat and, combined with a new court hire system, the Port Sorell Tennis Club looks forward to locals and holiday makers enjoying a great sporting activity. To book court time simply scan the QR code and follow the prompts.

Did you know that junior tennis coaching is offered by a qualified Tennis Hot Shots coach every Thursday afternoon from 3.30pm? Contact Peter Georgiades on 0439 637 301 for information.

The Port Sorell Tennis Club will be hosting a School Holiday Summer Tennis Camp in January 2023. Keep an eye on [www.facebook.com/PortSorellTennis](http://www.facebook.com/PortSorellTennis) for a confirmed date.

## BRINGING THE COMMUNITY TO THE BEACH

The Port Sorell Surf Life Saving Club's (SLSC) Nippers can't wait for the start of the new 2022-23

surf club season. Not only does it mean they can get back to having fun on the beach, but it is a wonderful way for children aged 5 to U14 to enjoy the beach in a safe environment.

The Junior Development Program is designed to ensure children have fun at the beach while participating in lessons that will give them a pathway to becoming a fully rounded participant in both lifesaving, leadership and sport.

More information on the Port Sorell SLSC Nipper program can be found at <https://portsorellslsc.org.au/nippers/>.

As well as the volunteer patrol teams keeping a close eye on the local waterways over the summer, an important part of the club's focus is to help the locals and visitors to the area enjoy being part of a connected and welcoming community.

The summer festival feel will continue this season with 30 December and 13 and 20 January being ear-marked as the dates for the club's annual market and music nights - Market by the Beach.

Interested vendors should contact [marketbythebeach1617@yahoo.com](mailto:marketbythebeach1617@yahoo.com)

To see the Nippers in competition mode on their home sand, pop down to North Freers Beach on 29 January when PSSSLSC hosts one of the most popular statewide nipper carnivals on the calendar. Over 350 juniors attending last year, and they look forward to providing the same inclusive atmosphere again in 2023.

To keep their volunteers on their toes, the club will host the annual Penguin Island Open Water Twilight Swim on 4 February commencing at 5:00pm.

There is something for anyone interested in volunteering at the PSSSLSC - even if you aren't keen on sand. Please contact [portsorellslc@gmail.com](mailto:portsorellslc@gmail.com) or call in one Saturday morning to talk to club members if you would like to help.

## NEVER TRIED GOLF BEFORE - HERE IS YOUR CHANCE!

Summer provides an ideal opportunity to experience the game of golf with the Thirlstane Golf Club currently offering beginner clinics on a Wednesday evenings. Located at 291 Squeaking Point Road, Thirlstane, the Thirlstane Golf Club has one of the best nine (9) hole courses in Tasmania.

No experience is necessary with golf clubs available for use from the clinic.

Participants can join in at any time - there is no commitment to attend each week. The sessions commence at 6:00pm and cost \$10 per person per session.

For those with more experience, or as your skill level improves, a competition is offered.

Now is the time to get over that mid-week hump with a hit out involving guided tuition. Spend time with friends and/or make new friends while learning a new sport and socialising.

Toasted sandwiches will be available at the end of the session, and the bar will be open. Everyone is most welcome.

A variety of memberships are available. For further information contact Bev (0408 108 169) or Wendy (0499 990 347).

## TRULY TASMANIAN CRAFT EXHIBITION AND SALE



The Apex Club of Latrobe's Truly Tasmanian Craft Exhibition and

Sale returns on 5-7 November.

Held in the Latrobe Memorial Hall and surrounding grounds, over 60 stalls will feature woodwork, to jewellery to pictures made of pebbles, garden features, children's clothing, paintings, handmade handbags, dog beds and more.

The venue will be open to the public from 9:00am until 4:30pm Saturday and Sunday and 9:00am until 3:00pm on Monday.

Admission is \$5 for adults and \$3 for children aged between 5-15 years.

All money raised by Apex is reinvested in the community and has previously funded Bells Parade parkrun, a new score bench for the Latrobe Basketball Club and blinds for the Latrobe Croquet Club.

## REEL KEEN FISHERS

The second Reel Keen Fishing Competition will be held on 19-20 November at the Port Sorell Boat Ramp. Open to boat crews of 2-4 people, the main prize is \$1,000. The Tuna prize is \$500 donated by DKL Electrical with the Squid prize is \$300. There will also be rod and reel prizes donated by Seamaster Tackle and BCF.

Don't forget the major raffle of a \$500 gift voucher from Deegan Marine.



Ulverstone Air Sea Rescue will patrol the ocean side of the event with interviews with competitors screened in the Reel Keen tent.

On shore activities include food and refreshments as well as face painting for the kids and musical entertainment by Gina Timms. CoastFM will be broadcasting live.

Entry is \$100 per boat and for every entry received, \$10 is donated to Paul's Kitchen, Devonport.

Want to know more, phone Mike on 0419 887 678 or go online to <https://bit.ly/ReelKeen>.



## COMMUNITY CHRISTMAS CELEBRATIONS RETURN

In the lead up to Christmas, the Latrobe Federal Band will be Carolling in the streets of Latrobe and Port Sorell, commencing on 5 December. They love you enjoying their music and they will take requests. Funds raised support the purchase and maintenance of musical equipment.

On 11 December, the Lions Club of Port Sorell will be hosting Carols by Candlelight at the Port Sorell Primary School, commencing at 6:00pm. Come and join the occasion by singing away with your neighbours, enjoy a free snag and the kids may even receive a treat from Santa! Instead of a Christmas Parade this year, the Lions Club of Latrobe will be presenting a Christmas Character Party at Bells Parade on 17 December from 5:30pm until 8:00pm.

Dress up as your favourite Christmas character, enjoy the entertainment, food and refreshments, arts and crafts, activities and a special visit from Santa. You can even BYO food.

This is an alcohol and smoke free event. Please bring a non-perishable food item or toy to donate to the Giving Tree and for distribution to the needy in the community. Santa's visit to the Latrobe Council area concludes on Christmas Eve when the Port Sorell Fire Brigade take him on a tour of the Port Sorell area to see all the children - big and small. He'll have lollies, a big smile, and a wave for everybody so listen out for the Christmas music and fire trucks as they move around the streets.

Keep an eye on the Port Sorell Brigade Public Facebook page for the start time and the route Santa will be travelling.

## COMING SOON TO A VENUE NEAR YOU ...

### NOVEMBER

- 1 Melbourne Cup Luncheon** at Tranquilles, 9 Gumbowie Drive, Port Sorell from 1:00pm until 5:00pm. Cost: \$38.50 p0 includes Champagne on arrival and 2-course meal, sweeps, fashion parade, best homemade hats, lucky door prizes. Phone: 6428 7555.
- 1 Melbourne Cup Luncheon** at the Lucas Hotel, 46 Gilbert Street, Latrobe. Cost: \$48 pp includes 2-course luncheon, glass of sparkling wine, sweeps and prizes. Phone: 6426 1101
- 5-7 Truly Tasmanian Craft Exhibition and Sale** at the Latrobe Memorial Hall, Gilbert Street, Latrobe from 9:00am until 4:30pm Saturday and Sunday and 9:00am until 3:00pm Monday. Admission: \$5 adults and \$3 children from 5-15 years.
- 5-7 War Records Display** at the Sassafras Community Hall, 76 Chapel Road, Sassafras from 10:00am until 3:00pm on Saturday and Monday and 10:00am until 1:30pm on Sunday. Cost \$10 per person includes light refreshments.
- 5 Not a Bumblebee** performs at Mackey's Royal Hotel Bar, 161 Gilbert Street, Latrobe from 9:00pm.
- 6 Songs that Won the War** performed by "In The Groove" at the Sassafras Community Chapel, 76 Chapel Road, Chapel Road, Sassafras 1:30pm for a 2:00pm start. Cost: \$25 per person includes afternoon tea. BYO refreshments and glasses. RSVP by 28 October to Dianne (0409 907 281) or Annabel (0439 314 989)
- 6 Dylan Boys Trio** perform at Shearwater Resort, 17-23 Shearwater Blvd, Shearwater from 6:00pm until 9:30pm. Free entry.
- 5-7 Truly Tasmania Craft Exhibition and Sale** Saturday and Sunday, from 9:00am to 4.30 pm and Monday, from 9:00am to 3:00pm at Latrobe Memorial Hall, Gilbert Street, Latrobe. Entry: Adults \$5, U16 \$2.
- 6 Latrobe Federal Band's 150<sup>th</sup> Anniversary Dinner.** RSVP's essential to 0408 262 187 or 0407 309 511
- 5 Gypsy Rose** performs at Shearwater Resort. 17-23 Shearwater Blvd, Shearwater. Doors open at 6:00pm. Tickets via Eventbrite.com.au, \$22 per person. Restaurant open but no bookings taken on this night and ticket required for entry
- 11 Remembrance Day Services** at 10:50am at the Latrobe Cenotaph and Port Sorell Defence Memorial Wreath layers are asked to register by 4 November by emailing latrobersl2@gmail.com for the Latrobe Service or phone 0407 852 946 (Rod) for the Port Sorell Service
- 11 The Austadium Tour - Australian Motley Crue Show, Def Replica (The Australian Def Leppard Tribute),**

- Poizon'Us (The Australian Poison Tribute Show)** at Shearwater Resort. 17-23 Shearwater Blvd, Shearwater. Tickets via trybooking.com.au, \$40 per person. Restaurant open but no bookings taken on this night and ticket required for entry
- 12 Port Sorell Golf Club Annual Car Park Sale** selling produce, books, plants, raffle, sausage sizzle, Bric-a-Brac, homemade cakes, preserves, and Christmas puddings from 8:00am until 2:00pm at the Port Sorell Golf Club, Shearwater Bvd, Port Sorell.
- 12 Devonport Stamp and Collectables Fair** at the Latrobe Memorial Hall, Gilbert Street, Latrobe from 9.30am until 2.30pm. Admission: Adults \$2, Children free. Phone 0407 335 487
- 12 House/Building Drawing Workshop** with Josie Badcock at the Latrobe Arts Hub, 21 George Street, Latrobe (co-located with the Latrobe Visitor Information Centre. Josie is well known for her publications of pencil drawings of old and colonial houses of the North-West. For further details: email josephenebadcock@gmail.com
- 12 Psychic Mediumship with Andy Lang and Paulette Harding** from 5:00pm at Tribe Connections Wellness Centre, 187 Gilbert Street, Latrobe. Join Paulette & Andy as they connect with audience members giving spontaneous readings and messages from the loved ones who have passed over. Cost: \$120 pp. Bookings to 0456 007 421 or hello@tribeconnections.com.au
- 12 Don't Come Monday** performs at Mackey's Royal Hotel, 161 Gilbert Street, Latrobe from 8:30pm Free entry.
- 14 Latrobe Council Meeting** at 170 Gilbert Street, Latrobe from 5:00pm. Registration essential. Phone 6426 4444.
- 15-16 Weber Women's Big Bash League Match - Hobart Hurricanes vs Melbourne Stars** at the Latrobe Recreation Ground, Gilbert Street, Latrobe from 3:00pm. Tickets: Adults \$10, U15 free - available at <https://bit.ly/WBBL-Latrobe>.
- 18 International Men's Day**
- 19-20 Reel Keen Fishing Competition** at Port Sorell Boat Ramp, East Esplanade, Port Sorell. Features fishing and squid competition, cash and gear prizes, family fun weekend, live music. For more information, phone 0419 887 678.
- 25 Chapter V** performs at Shearwater Resort, 17-23 Shearwater Blvd, Shearwater from 6:30pm until 10:00pm. Free entry.
- 26 Matt and CJ** perform at Mackey's Royal Hotel, 161 Gilbert Street, Latrobe from 8:30pm Free entry.
- 28 Electric Vehicles - Everything You Want To Know** presented by Port Sorell U3A at the Banksia Centre, Pitcairn Street, Port Sorell from 2:00pm. Register at [www.portsorellu3a.org.au](http://www.portsorellu3a.org.au)

- 30 Elevate ME Candle Making Workshop from 7:00 pm** at Tribe Connections Wellness Centre, 187 Gilbert Street, Latrobe. "ELEVATE ME' A candle designed to help with study, focus, career, learning, stress, motivation, retaining information and advancing oneself to achieve the next level. Cost: Small \$40, Large \$55. Bookings to 0456 007 421 or hello@tribeconnections.com.au

### DECEMBER

- 2 Don't Come Monday** at Shearwater Resort, 17-23 Shearwater Blvd, Shearwater from 6:30pm until 10:00pm. Free entry.
- 3 Monsters of Rock** perform at Mackey's Royal Hotel, 161 Gilbert Street, Latrobe from 8:30pm Free entry.
- 3 Port Sorell Surf Life Saving Club beach and waterway patrons commence.** portsorellslc@gmail.com
- 5 Carolling throughout Latrobe and Port Sorell** by the Latrobe Federal Band
- 10 Ironcliffe** performs at Mackey's Royal Hotel, 161 Gilbert Street, Latrobe from 8:30pm Free entry.
- 11 Port Sorell Carols by Candlelight** at the Port Sorell Primary School from 6:00pm.
- 12 Latrobe Council Meeting** at 170 Gilbert Street, Latrobe from 5:00pm. Registration essential. Phone 6426 4444.
- 16 Drew Grey** at Shearwater Resort, 17-23 Shearwater Blvd, Shearwater from 7:00pm until 10:30pm. Free entry.
- 17 Latrobe Lions Christmas Character Party** at Bells Parade, Latrobe from 5:30pm until 8:00pm. Food, refreshments, entertainment and activities for all and a visit from Santa. This is an alcohol and smoke free event.
- 17 The Ringmasters** perform at Mackey's Royal Hotel, 161 Gilbert Street, Latrobe from 8:30pm Free entry.
- 21 Latrobe High School Leavers Parade** at the Latrobe Recreation Ground from 5:00pm - 6:45pm.
- 21 Summer Solstice Sacred Circle** at Moorland Beach Road, Wesley Vale from 5:15pm until 7:00pm. Free event. Bring a small item that has personal meaning to you, something you care about, wrapped in plain paper to give away. Phone: 0438 809 748.
- 24 Santa's Tour of Port Sorell.** Check out the Port Sorell Fire Brigade's Facebook page for route and timings.
- 24 Christmas Banquet Pick Up** from Tranquilles, 9 Gumbowie Drive, Port Sorell. Save yourself the trouble of cooking this Christmas with antipasto platter, appetizer, mains and dessert catering for families of 4 through to 8 - costs vary. Orders must be placed by 12 December. Phone: 6428 7555
- 30 Market by the Beach** at the Port Sorell Surf Life Saving Club from 5:00pm. marketbythebeach1617@yahoo.com



# NEW COMMITTEE SOUGHT FOR HENLEY-ON-MERSEY 2024

The Henley-on-Mersey Management Committee advise that they are disbanding due to an inability to resource the festival's delivery. The future of the Henley-on-Mersey festival is currently in limbo and will not be going ahead in 2023; however, community consultation will determine whether it will relaunch in 2024.

Comprising of the Rotary Club of Latrobe and Lions Club of Latrobe, the Henley-on-Mersey Management Committee stated last year that the current incumbents would be stepping down from the coordination of this festival. Due to limited and ongoing resource issues, resulting from dwindling membership and an aged cohort, there was an inability of the parent organisations to continue to be involved

Henley-on-Mersey was first held in 1911 as a picnic day for the community with funds raised going into the ongoing development of the Bells Parade area. This has provided the picturesque and highly used reserve that is Bells Parade today.

Throughout the many years of staging Henley-on-Mersey, its delivery has involved various groups who have presented their own festival format, so this situation is not unique. While the management committee pre-empted this moment and sought support from the community to assist as volunteers, and subsequently offered to mentor another organisation or group of organisations to facilitate the smooth transition of the festival to

another's management, neither call was answered. While persevering with the coordination of the 2022 festival, a surge in COVID-19 cases saw many personnel withdraw their ability to assist, resulting in the cancellation of that festival. "This has not been an easy decision by the management

committee, and many avenues have been pursued to keep the festival going however it is simply not sustainable for us as individuals to continue our involvement," said Henley-on-Mersey Management Committee Chairman, Mr David Crampton. "The key challenge faced by the committee was the huge resource commitment. It takes many people to present this festival in its current format and at a time of the year where many potential helpers have family commitments," he added. While the festival will not proceed in 2023, Latrobe Council are considering what support they might be able to provide to another organisation to relaunch Henley-on-Mersey in 2024 and beyond.

Latrobe Council's General Manager, Mr Gerald Monson said "learning from the resourcing that the current festival requires, all considerations will be explored for the 2024 festival. Latrobe Council's Citizen of the Year Award presentations and Citizenship Inductions will continue to be held on Australia Day. In coming months, a community meeting will be called to gauge support for the continuation of Henley-on-Mersey and whether there is an organisation willing to put their hand up to take it on"



## CHANGE TO OFF LEASH DOG AREAS

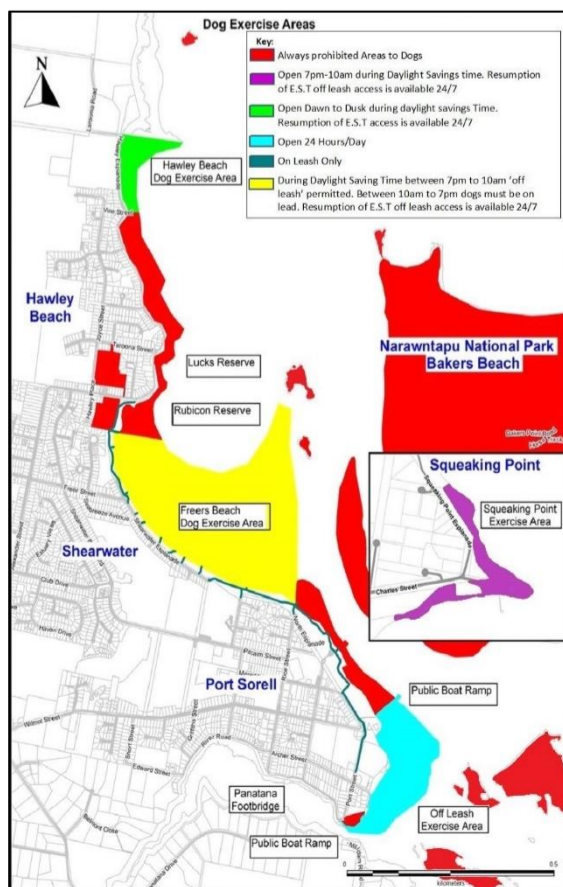
With the resumption of Daylight-Saving Time, some of Council's off-leash dog exercise areas have restricted Off Leash Times, specifically:

- Squeaking Point Exercise Area - 7pm to 10am Off Leash permitted.
- Hawley Beach Dogs Exercise Area - Dawn to Dusk Off Leash permitted.
- Freers Beach Dog Exercise Area - 7pm to 10am Off Leash permitted

All dogs in a public place outside Councils off-leash exercise areas must be on a lead not exceeding 2 metres, and all dogs in the leash-free area must remain under effective control and be responsive to their owner's command.

Failure to maintain effective control of your dog or not abide by the change in Off Leash times, may result in an 'on the spot fine' of \$181.00 for each offence.

To find out more, go online to [www.latrobe.tas.gov.au/animalcontrol/animal-welfare](http://www.latrobe.tas.gov.au/animalcontrol/animal-welfare).



## FUTURE EDITIONS

Article and event deadlines and distribution dates are provided to assist contributors with their forward planning

Deadline	Edition
15 Nov	Jan-Feb '23
2 Feb	Mar-Apr
27 Mar	May-Jun
1 Jun	Jul-Aug
27 Jul	Sept-Oct
28 Sept	Nov-Dec
20 Nov	Jan-Feb '24

Contributions must be relevant to the Latrobe Council area and suitable for inclusion. Submission will be used at the discretion of the editor. Council does not pay for editorial submitted. Articles must be submitted to the editor by the relevant deadline via email to [council@latrobe.tas.gov.au](mailto:council@latrobe.tas.gov.au) or posting to P O Box 63, Latrobe, 7307.

**DISCLAIMER** - Although all care has been taken to ensure that information contained in this newsletter is correct at the time of printing, Latrobe Council gives no warranty or assurance and makes no representation as to the accuracy or reliability of any information or advice contained in the newsletter, or that it is suitable for your intended use. The publication of articles supplied by external organisations does not imply any form of endorsement by the Latrobe Council.