



LOCAL GOVERNMENT REFORM UNDERWAY

The opportunity for Local Government reform is now very much upon us and we in Tasmania have a once in a generation opportunity to set our state, our communities and our councils up for the decades to come.

The last major reform in the sector occurred back in 1993 when the standard approach to reform delivered a reduction of councils from 46 to the current 29. Much has changed since 1993, not least of which is the formation of TasWater and the transfer of responsibility for delivery and maintenance of water and sewerage infrastructure from councils to that entity. That single issue has impacted massively on councils across the state and comprehending that impact will no doubt form a component of the review process. Our communities need and expect more from their local councils than ever before. Just as there have been many changes since 1993 so too will there be into the future. The current review will offer Latrobe and Kentish residents the opportunity to consider, and feed into the process, what it is our councils will need to provide in the years to come.

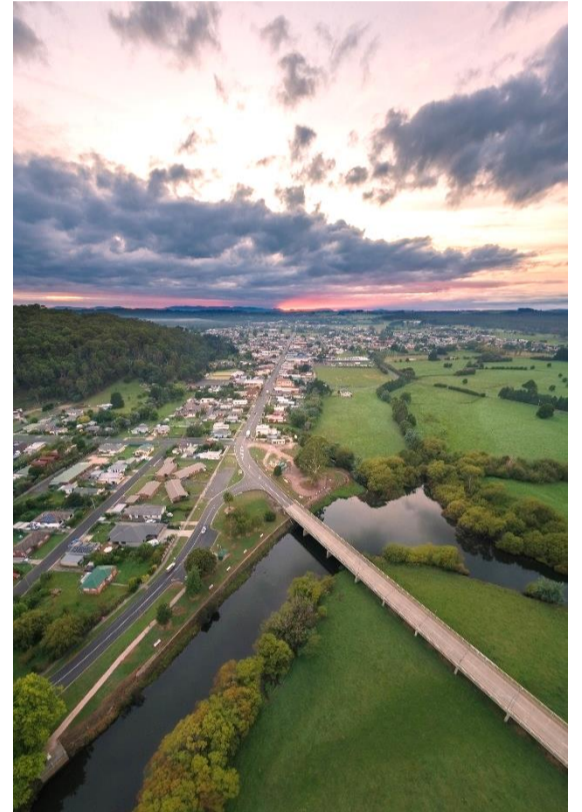
How will those services, projects, programs, etc be best delivered? How will we retain that sense of place and belonging that most of us value about the towns and communities in which we choose to live.

Are some current State Government responsibilities better able to be delivered at a regional or local level, and vice versa? Will councils across the state be financially viable and capable of delivering for their communities. Will there be recognition of the unprecedented, nation leading resource sharing between our two councils and the extraordinary efforts of our staff to deliver the associated benefits to our two communities?

Can or should the current Municipal Alliance between the Kentish and Latrobe Councils be replicated elsewhere in the state?

So many questions and so few answers. Who knows what the outcomes will be but what is known is that this process will be different.

The absolute key and first priority is to determine what our communities will need



Local Government to provide into the future.

To best understand that we need your input and support. Please take the opportunity to attend public information sessions, make submissions and talk to your Local and State Government representatives. Help us shape Local Government reform in this state so that you are the beneficiary rather than one of the silent majority who choose to let change happen without having any input.

Our two councils have been committed to a continuous improvement ethos for over a decade and we will make every effort to influence the debate and outcomes of the current reform process so that we help shape the reform rather than have the reform shape us.

Mayor Peter Freshney



Photos by Neil Hargreaves

Shearwater Summer Markets

MARKET BY THE BEACH

at North Freers Beach, Shearwater

7 and 14 January

4:30pm until 9:00pm

marketbythebeach1617@yahoo.com

SHEARWATER VILLAGE MARKET

at 8 Club Drive, Shearwater

8, 15 and 22 January

9:00am until 1:00pm

thevillagemarketshearwater@gmail.com

SHOW ME THE MONEY

Stronger Communities

This program aims to support the Australian Government's commitment to delivering social benefits in



communities across Australia. Funding between \$2,500 and \$20,000 is available.

Closes - 19 January 2022

<https://www.infrastructure.gov.au/territories-regions-cities/regions/regional-community-programs/stronger-communities-programme>

Further information, Department of Industry, Science, Energy and Resources, clientservice@infrastructure.gov.au or 132 846.

AgriFutures Australia - Rural Women's Award

This Award aims to empower and celebrate women's inclusive and courageous leadership in Australia's rural and emerging industries, businesses, and communities.

Closes - 28 January 2022

<https://www.agrifutures.com.au/people-leadership/rural-womens-award/>

Further information, AgriFutures Australia, rwa@agrifutures.com.au or 02 6923 6900.

COVID-19 Creative Economy Support Package RISE Fund

This program seeks to support the development, delivery and presentation of activities across all art forms to audiences across Australia. Grants between \$25,000 and \$2 million are available.

Closes - 31 May 2022

<https://www.arts.gov.au/funding-and-support/rise-fund>

Further information, Office for the Arts, RISE@arts.gov.au or (02) 6271 7971.

Small Scale Renewable Energy Scheme

This program encourages investment in small-scale renewable energy and creates a financial incentive for individuals and small businesses to install systems that produce electricity and deliver hot water.

Closes - Ongoing

<http://www.cleanenergyregulator.gov.au/RET/About-the-Renewable-Energy-Target/How-the-scheme-works/Small-scale-Renewable-Energy-Scheme>

Further information, Clean Energy Regulator,

enquiries@cleanenergyregulator.gov.au or 1300 553 542.

Skilling Australians Fund

This program aims to support the training of apprentices and trainees to help employers gain skilled workers to drive innovation and growth.

Closes - Ongoing

<https://www.dese.gov.au/skilling-australians-fund>

Further information, Department of Education, Skills and Employment, 1300 488 064.

COMING SOON

Latrobe Council's Arts, Culture and Festivals Sponsorship AND Emerging Needs Grants for the 2022-23 financial year. Open in March, close May for allocation from July 2022.

YOUR ELECTED REPRESENTATIVES

Mayor Peter FRESHNEY0417 287 006

D/Mayor Graeme BROWN..0417 598 116

Shayne (Cush) ALLISON0409 792 648

Michael McLAREN6426 2777

Vonette MEAD0407 055 180

Sommer METSKE0409 622 710

Garry SIMS 0419 139 053

Gerrad WICKS0488 325 590

Lesley YOUNG.....0419 326 250

COUNCIL'S WORKS REPORT

The following works are scheduled to be undertaken throughout the Latrobe Municipality during January and February:



Civil Construction and Maintenance

- Various carpark re-surfacing in Shearwater
- Various road resealing in Port Sorell area, Bakers Beach and Squeaking Point
- Stage 2 of Tarleton Road reconstruction - between Cornicks Road intersection and the municipal boundary
- Squeaking Point Road safety improvements project
- Warrawee carpark upgrade works
- Rural roadside spraying
- Rural roadside mowing
- Gravel road resheeting and maintenance grading program

Town Services

- Port Sorell Memorial Hall side access upgrade
- Public amenities priority upgrade works
- Elderly Persons Units maintenance and refurbishments - ongoing
- Town footpath and facility maintenance and pressure cleaning
- Various town signs and furniture maintenance

Green Spaces

- Parks mowing - crews have seen more growth than normal with consistent rainfall
 - General parks and gardens maintenance
- Should you have any queries in relation to the above works, please do not hesitate to contact Council's Operations Manager on 6426 4453.

BANKSIA REDEVELOPMENT GOES TO MARKET

Council's November 8 meeting approved the tender process for the Banksia Facilities Centre Redevelopment. The decision follows a significant amount of work to rescope the project following ongoing impacts from COVID-19. These impacts resulted in a cost increase of approximately 30% for the delivery of construction projects, from when the project was first scoped, and is considerable of the evolving change to existing and potential user needs. For example, the significant growth in sport and recreation activities undertaken at the venue and that public schools are also now less likely to offer students multi-day camps due to changes to how school levies are calculated and general increased risks relating to COVID-19.

The key changes to the project include a staged upgrading of the accommodation; specifically, two blocks will be built rather than the initial four, with some of the existing cabins upgraded. Council will consider the construction of the other two blocks in the future.

The other significant change is a move away from further upgrades of infrastructure specific to performing arts. Instead, the redevelopment will focus on expanding the use of that venue space to provide for the significant demand for recreation activities, such as pickleball, table tennis etc. There will be no loss of any existing performing arts functionality. The revised redevelopment has also considered the needs of the Port Sorell Heritage and Tourism group, with Council personnel actively working with them on better-suited alternatives. It is expected to announce more on this in due course. These revisions have been the subject of extensive community consultation, primarily via -

- the Port Sorell Advisory Committee, on which many in the community are engaged via their organisational representatives on this committee;
- user groups of the Banksia Centre; and
- the Banksia Management Committee.

Council is aware of insinuations that the revisions were made to modify Camp Banksia to better house Seasonal Workers into the future. Council reiterates that these statements are inaccurate and played no part in this decision-making process. The primary considerations to this decision resulted from the fixed budget and how to best deliver a redevelopment that addresses both historical and evolving needs for all demographics. Once Council has assessed the tender submissions, it will be able to announce a construction timeline.

SEASONAL WORKERS RETURN TO BANKSIA

Following significant positive feedback from the local agriculture sector and community and an inability for the private sector to offer temporary housing for up to 150 seasonal workers simultaneously, Council has agreed to Seasonal Worker Accommodation's (SWA) request to allow those agricultural workers to stay at Camp Banksia this summer. The workers will be primarily engaged in supporting local agricultural enterprises in picking berries and are expected to arrive this month, following a period in quarantine. On their vacation of the site, Council anticipates a smooth transition to the commencement of the Banksia Facilities Centre redevelopment works.

This support relieves pressure on an already overheated residential tenancy market and negates the need for seasonal workers to be accommodated in dispersed locations and potentially in non-compliant and sub-standard housing, as has previously been experienced.

As a camp open for bookings from near and afar, Camp Banksia has capacity to sleep 155 people in various compliant accommodations. Primarily clusters of six-berth cabins with shared amenities, the site also offer capacity for smaller groups in self-contained facilities (two types) and unit accommodation.

The site provides a range of indoor and outdoor experiences for dining, social and sporting pursuits over its 5.939 Ha.

Occasionally, large groups seek additional requirements not generally offered at the camp. While camp management continues to work with all users of the camp to achieve solutions to these special requests, it may not be practical on every occasion.

Council is aware of suggestions that it cannot offer accommodation support, citing among other things, sections of Workplace Health and Safety Legislation and the Interim Planning Scheme. These statements are false and baseless and are being propagated by a few disgruntled individuals to further their personal agendas.

Council is aware of a complaint to the Economic Regulator based on National Competition Policy compliance. At the time of writing, this was being assessed by the Economic Regulator as to whether it had



INCREASING COMMUNITY CONSULTATION

With the Port Sorell Advisory Committee recommending to reduce the frequency of meetings to quarterly, it was important for Latrobe Council to maintain the momentum of community consultation and information sharing.

Port Sorell Community Information sessions will be held at the Banksia Centre, Pitcairn Street, Port Sorell on 17 March, 16 June and 15 September, commencing at 7:00pm.

While more information will be circulated prior to those meetings, booking attendance will continue to be essential via Eventbrite.

HYDROTHERAPY POOL UPGRADE UNDERWAY

Hydrotherapy services are one step closer with works commencing on the redevelopment of the site by local construction company, Fairbrother Pty Ltd late November.

"The provision of hydrotherapy services is a key component to improving the quality of life and mobility of many people in our community," said Mayor Peter Freshney.

"Council has championed that need and continues to work through the issues associated with the re-establishment of those services in Latrobe. The redevelopment is being funded by a \$400,000 investment by the State Government. That cost is reflective of the ever-increasing demands on the construction industry and provision of infrastructure during a time of unprecedented demand. I do thank the Tasmanian Government for their investment and support of this project," said Mayor Freshney.

In developing the facility redesign, Latrobe Council has consulted with local service providers to ensure the hydrotherapy pool meets their needs and those of their clients. Council also investigated how it could provide opportunities for broader community use of the facility.

Consequently, the redevelopment will include amenities that are disability compliant, including a ceiling-mounted hoist and a new pool heating system to reduce operational costs while providing improved reliability. Security and privacy are also a high priority and lockers will be

merit for investigation. Should this progress, Council will engage in that process openly.

Ms Rachel Cornelius from Seasonal Worker Accommodation, who booked Camp Banksia, stated that the use of the Camp Banksia facilities was invaluable to their service provision.

Ms Cornelius added, "we have been progressing the identification of appropriate sites within the Latrobe Council area to develop purpose specific housing for 600 seasonal workers, built in three clusters. We are currently negotiating with a property owner and anticipate lodging a development application with Latrobe Council very soon, commencing the build in 2022."

included to store personal belongings while clients are utilising the hydrotherapy pool and associated facilities.

"Council is conscious of balancing the health benefits of this service while at the same time working to minimise any financial shortfall and associated impact on ratepayers," said Mayor Freshney. Fairbrother is working to a six-month redevelopment timeframe which, all going well, should result in the reopening of the facility in late April/early May.

CARAVAN PARK REDEVELOPMENT

With the issue of a planning permit, Stage 2 of the Port Sorell Caravan Park redevelopment will commence early this year and be completed over the summer holiday period.

Stage 2 includes the construction of a new caretaker residence/reception area and new cabin accommodation which should result in minimal impact on campers.

Future stages of this project will see the Port Sorell Caravan Park entry relocated to Darling Street and additional amenities constructed throughout the grounds.

PROPOSED NORTH-WEST COAST HARNESS AND GREYHOUND TRACK

Tasracing, the Principal Racing Authority in Tasmania, has identified its preferred location for new harness and greyhound tracks on the north-west coast - private and Crown land at Palmers Road at Latrobe. Tasracing has proposed to construct new racetracks for both the harness and greyhound codes with an \$8 million contribution from the Tasmanian Government over two years.

Tasracing CEO Paul Eriksson said the company had engaged with residents about its initial plans and explained directly what the proposal looked like.

“These conversations will be ongoing,” he said.

Mr Eriksson said while initial planning work commenced after Tasracing reached an agreement to vacate the Devonport Showgrounds, it had not been able to formally release or discuss publicly its plans until last November.

“We completed work on a draft masterplan for the precinct in November and commenced our engagement with the residents in late November,” he said.

“It is proposed that we build the racing facilities first, followed by other facilities to be determined at a later date.”

Mr Eriksson said at the conclusion of the master planning process, and community and stakeholder engagement, Tasracing would finalise and submit a Development Application to the Latrobe Council.

“This will be subject to a further consultation period as part of the council’s normal decision-making as the planning authority,” he said.

To assist Tasracing in this work, the company appointed Dalton Consulting Engineers (DCE) to provide design and engineering services for the facility, and engaged with track design experts Professor David Eager, regarding the greyhound track, and Wayne Edgeloe for the harness track.



Sam Tucker, of Commercial Project Delivery, is project managing the proposed track development project.

Tasracing will schedule ongoing meetings with stakeholders to outline in detail the draft masterplan for the area and answer any questions as they arise.

An industry project committee was established comprising Clare McDonald, Mike Castles, Nathan Rockliff and Adrian Duggan from the harness code, and Robyn Johnston, Ben Englund, Justin Crawford and Graeme Barber from the greyhound code.

The committee has provided feedback direct from industry to Tasracing and information has been fed back to industry directly through these committee members.

PROTEST COMES TO COUNCIL

Several resident and non-resident protestors attended Latrobe Council’s November 8 Ordinary Meeting, bearing placards and a mock coffin to raise grievances relating to housing seasonal workers at Camp Banksia.

Council believe that this action is a coordinated attack on Council, based on false or incorrect assumptions, and an attempt to divide the community.

Through its usual business processes, Council has responded to the questions raised during public question time.

Council welcomes all constructive forms of engagement with the democratic process and would like to thank those who acted in a respectful manner and abided with COVID-19 requirements.

Sadly, a small number of protestors acted in an improper manner which included inappropriately approaching an elected member, defacing Council property, and recording a Council meeting without consent. Council will not tolerate such behaviour.

Council is also concerned that some placards contained statements with racist imputations. Council has a zero-tolerance approach to such behaviour on its premises or in our community.

PUMP TRACKS APPROVED

A skills park was initially identified for construction in the 2019 Bosworth Park Master Plan. This was recently reviewed by the Latrobe Sport and Recreation Committee who have recommended to Council that a pump track be created instead. Council endorsed this recommendation.

So what’s the difference?

A skills park generally has a gravel base and includes timber and rock sections as well as other obstacles. It is predominantly used by mountain bikers to develop their skills prior to taking to the proper mountain bike trails.

A pump track has an asphalt base, enabling it to be used by bikes, scooters, skateboards, in-skaters etc and includes rollers and bermed corners providing a facility encompassing of a wider age group and skill level.

The pump terminology came about from the concept that bike riders can maintain momentum around the track by compressing the front suspension of their bike. Confidence is gained as riders move from pumping to manually manoeuvring then doubling up (increasing speed). Riders can set themselves challenges and goals and refine a lot of skills on this compact track prior to taking to the Wild Mersey Mountain Bike Trails.

As well as a pump track in Latrobe, Council has approved the inclusion of a pump track as part of the Camp Banksia redevelopment works.

The siting of this pump track will be near the existing tennis courts.

International trail builders, Trailscapes Pty Ltd, have completed the design of both these tracks and pricing is currently underway for construction this financial year.

For information on the project, please contact Council on 6426 4444.

CLEAN UP AUSTRALIA DAY

For generations of Australians, Clean Up Australia Day remains one of the most iconic environmental events in the Australian calendar.

The massive uptake in single-use items, including face masks and coffee cups, as well as the spike in online shopping and home deliveries and the associated packaging waste, means that Clean Up Australia Day’s mission remains critical. Will you step up to clean up?

Key dates for 2022:

- Business Clean Up Day - 1 March
- Schools Clean Up Day - 4 March
- Clean Up Australia Day - 6 March

For more information, visit <https://cleanup.org.au/cleanupaustaliaday>.

PRIZE MONEY ENOUGH TO BUY A CAR

If you visit the Australian Axeman's Hall of Fame at Bells Parade, Latrobe, you might be excused for not paying much attention to a nondescript Eucalyptus regnan block that has been smashed in two in a woodchopping contest. It has a few bent nails hammered around the top edge and has been stuck back together, varnished, and is displayed in a simple plywood frame.



You may ask yourself what's so special about this block of wood? Well, the reason for saving this block is that it has a story to tell.

This 12-inch block was cut by the very first winner of the prestigious Tasmanian Thousand, Reg Purton from Forth,

Tasmania. In 1962 a grant of £1,000 from the Tasmanian State Government under Eric Reece made it the richest handicap woodchop event in the world. The prize money was enough to buy a new car at the time, so the event attracted axemen from all over Australia.

The inaugural contest took place in Scottsdale with 5,000 spectators flocking to the country oval to witness the event. The cheering drowned out the starter's voice, making it difficult for the backmarkers to hear. Latrobe-born Purton, a Public Works Department employee who was 40 years of age and weighed a substantial 17 stone, won by a blow from Meander dairy farmer Graham Johnston. First prize was £750, a specially struck gold medal and a racing axe. From then on, the event rotated anticlockwise through all the chopping associations in the state: from North East to North, North West, West and South. It has produced winners from every State in Australia.

If you want to experience the thrills of this unique and historic sport, visit the 61st Tasmanian Government Thousands Woodchopping Carnival which will take place on 15 January at the Deloraine Showgrounds. This is the 60th Anniversary of that original 1962 Scottsdale event. The Eric Reece Memorial Thousand 300mm Standing Handicap is now worth \$10,000 and will attract many fine axemen wishing to demonstrate their skills in pursuit of the prize.

INFRASTRUCTURE PROJECTS BOOST APPRENTICESHIPS

Local firm BridgePro has welcomed four new trade apprentices in civil construction, joining the 12 apprentices already employed.

BridgePro credits the recent surge in infrastructure projects, such as the Latrobe Council Flood Mitigation Project, with their growth.

"With projects like the Latrobe Flood Mitigation and civil construction hotting up right across Tasmania, our industry will soon be busier than ever," said Mr Ben Seymour, BridgePro Project Engineer. In addition to the 16 trade apprentices, BridgePro is providing summer internships for four engineering students.

"BridgePro is committed to doing our bit to train the construction workforce of tomorrow," said Mr Seymour.

BridgePro is in the final stages of finalising the design specifications for the project, inclusive of feedback from the community consultation sessions.

One of the key changes resulting from the feedback is that part of the levee will now run under Cotton Street.

Latrobe Council is presently working through the State and Federal approval process and is in active discussions with impacted landowners.

Construction on the project is anticipated to begin in early 2022, subject to relevant approvals. BridgePro was awarded the Flood Mitigation Project tender in early 2021.

\$37M REDEVELOPMENT IS UNDERWAY AT THE MERSEY

A \$37m State Government-funded redevelopment at Mersey Community Hospital (MCH) will begin this year.

Works will include:

- Construction of an additional endoscopy unit
- Redeveloped day procedures unit
- Expansion of recovery and theatre spaces
- Upgraded and expanded outpatient clinics, including a separate, dedicated paediatric consulting area
- New and upgraded staff facilities
- New and upgraded building services and equipment

MCH Nursing Director of Operations Anthony Hurst said, "this will allow MCH to undertake a broader range of procedures, with an aim to reduce the number of patients on wait lists in a range of elective surgery and endoscopy categories," Mr Hurst said.



Mr Hurst said patients and visitors to the hospital would notice a few changes at the hospital throughout the redevelopment period. "The biggest change will be the re-location of the MCH outpatients' clinic to a demountable building, which will be situated at the Torquay Road end of the "Old Nurses' Home," Mr Hurst said.

"People should look out for signage regarding accessing services and car parking."

"There will undoubtedly be increased noise and disruption throughout the project - we really appreciate everyone's patience as we work to upgrade our facilities."

The redevelopment is expected to take up to three years to complete.

These works are part of the broader \$55 million Expanded Mersey Community Hospital project planned for the hospital in coming years.



ABUNDANT SWIMMING OPTIONS - FRESH WATER, SALTY SEA & POOLS

Aquatic activities are numerous throughout the Latrobe Council area, including -

- the peacefulness of the fresh water and tree lined banks of the Mersey River that meanders west of the town of Latrobe;
- the salt water and sand of the Port Sorell Estuary which is patrolled by the Port Sorell Surf Life Saving Club along Freers Beach; or
- the chlorinated and life guarded facilities of the Latrobe Swim Centre in George Street, Latrobe.

The Latrobe Swim Centre boasts two pools. The main pool (25m x 10m with a lap clock) caters for patrons seeking to better their swimming abilities through timed lap swims or general water play with a variety of free aquatic play equipment available. The paddlers pool is sun shaded and caters for the very young. The venue also has a fenced children's playground area, kiosk, first aid facilities, covered seating areas, an extensive grassed area with basketball hoop and BBQ facilities. So why not make a day of it?

Open to the public from 10:00am until 6:00pm every day of the week, the Latrobe Swim Centre is also available for private hire at the discretion of the Pool Manager.

Latrobe Swim Club activities are held on site each Monday and Wednesday from 3:30pm until 6:45pm. The public are also able to use the pool simultaneously, until 6:00pm.

Admission costs apply with the Latrobe Swim Centre season continuing until late March. For more information, please contact the Latrobe Swim Centre direct on 6426 1843.



ADD YOUR DIGITAL CERTIFICATE TO A STATE OR TERRITORY CHECK IN APP

The Check in Tas App allows you to store your COVID-19 digital certificate on your device and display it from the Check in TAS app.

To use this new functionality, follow this easy four step process:

1. Upgrade the Check in TAS App to the latest version (some devices will do this automatically; others will ask you to upgrade manually);
2. Access your COVID-19 Vaccination Digital Certificate through either your Medicare online account, MyGov, or through the Express Plus Medicare App;
3. Select to share your COVID-19 vaccination digital certificate with Check in TAS; and
4. You will then be directed to the Check in TAS app to click 'accept' to add the digital certificate to your profile, which then shows a 'green tick' next to your name on the Check in TAS home page.

Your digital certificate is not stored in the Check in TAS app, but on your device. Did you know that the Check In TAS App is compatible with the check in apps used in Queensland, Northern Territory and Australian Capital Territory. This means that you can use the Check in TAS App in these jurisdictions to check in to venues and events.

For more information about the Check in TAS App, go to <https://www.coronavirus.tas.gov.au/check-in-tas>

TOURISM OPTIMISM

Two years ago, the world watched and waited as COVID-19 spread from country to country. Since that time, many industries have been significantly impacted - not least the tourism and hospitality sector. But today, there are many reasons to feel optimistic about the future of tourism in our region, and in the Latrobe Council area specifically.

Mr Tom Wootton, West by North West Regional Tourism CEO, said, "Tasmania's North West can be Australia's preeminent agritourism destination. There's no doubt we have more to offer than agritourism, but the clearer our regional tourism offering, the greater our market cut-through. We can own agritourism in a way that other regions can't, and the current tourist appetite for analogue, agri-based experiences is enormous."

This is particularly relevant to the Latrobe Council area, given its critical mass of producers on the new-look Tasting Trail and interest from its local farmers in our Accelerating Agritourism program," said Mr Wootton.

"We are also working with the Latrobe Council to further enhance the Wild Mersey MTB trails, leveraging a seemingly ever-growing market. Then we add in the coastal pathway, Port Sorell Heritage Trail and cultural opportunities at Narawntapu National Park and Latrobe's tourism potential suddenly becomes very clear."

"Here's to the next chapter of tourism in Latrobe. I'm convinced it's going to be exciting!"

SCHOOL SIGNAGE UPDATED

The Tasmanian Government has funded the installation of new electronic school speed limit signs across Tasmania.

Locally, this includes signage near Port Sorell Primary School, Andrews Creek Primary School at Wesley Vale, St Patrick's School at Latrobe and Latrobe High School.

This project is being undertaken between 7:00am until 5:00pm Monday to Friday with works scheduled to conclude by 14 January 2022.

Some work will involve the use of machinery which generates noise. Every effort will be made to minimise this impact with machinery and vehicles being turned off when not in use.

There will also be some temporary traffic changes at some school locations to ensure the safety of workers and road users. Lane closures and a reduced speed limit may also be in place, affecting travel time. Motorists are asked to please keep to the speed limits and follow the direction of traffic controllers and signs.

For more information on the Department of State Growth projects, visit transport.tas.gov.au

BUILDING UPDATE

A total of 130 building, plumbing, and commercial applications and notifications of works were received by Council during August, September, and October 2021. They comprised of 36 dwellings; 4 dwelling addition/alteration; 24 outbuildings; 16 commercial/industrial and 54 plumbing applications and 3 others with a conservative value of \$21,334,430.

OBEDIENCE CLASSES RETURN

15 months have passed since Latrobe Council first offered dog obedience training for residents and their puppies and dogs over 6 months of age with little or no prior training.

The Foundation Dog Obedience course is an excellent way to develop trust between dog and owner and has seen the graduation of some 50 handlers and their dogs.

The course delivers handler proficiency in all the basic obedience commands as well as imparting knowledge in relation to all matters relating to dogs, such as taxonomy, foods to avoid, how and to what degree they “sense”, how they think and most importantly, how to develop the best relationship with your dog.

The courses are conducted by Mr Brian Patrick who has many years of experience as an Obedience Instructor, with his own dog, “Taak”, competing at the highest level of Obedience, both locally and nationally.

Foundation Dog Obedience courses will be continuing in the Latrobe Council area during 2022 but relocating to Shearwater Park to encourage participation from the Port Sorell area on a site that is not impacted by broad community use and associated distractions.

Each lesson is approximately 1 hour in duration and held early on a Sunday morning. All dogs must be on lead.

These 6-week courses are being offered in 2022 on -

Course 1 February 13, 20 and 27 and March 6, 20 and 27

Course 2 May 1, 8, 15, 22 and 29 and June 5

The Foundation Dog Obedience course is run on a focused engagement and reward system with participants required to maintain training between classes.

The low cost of \$27.50 for the 6-weeks has been maintained to encourage participation.

Additionally, the completion and passing of this course will affect a discount off the full dog registration rate with Latrobe Council.

Further information and registration forms are available online at www.latrobe.tas.gov.au/services/animalcontrol.

Participants that pass the Foundation course will be invited to participate in more advanced training.

MAKE SUMMER SAFE - REDUCE YOUR FIRE HAZARD

We are now in bushfire season with owners of urban blocks responsible for slashing them to reduce their fire potential. While many property owners are diligent in keeping their properties fire safe, there are still a few who regularly fail to conduct fire safe maintenance.

Please ensure your property is clear of excess vegetation, and a fire break has been constructed. Many blocks may require multiple slashing given the late Spring rains.

Council issues fire abatement notices to property owners where an assessment has been made that the property requires slashing, mowing or vegetation removal. If works aren't completed in a timely manner, Council will organise to have the work completed and charge the cost back to the owner. Fines also apply.

Council customer service staff have a list of contractors who can complete this work. If you are concerned with vegetation growth in the urban environment, please contact Council's fire abatement officer on 6426 4444 or go to the Tasmania Fire Service website - www.fire.tas.gov.au - or contact your local Fire brigade for advice.

COMMUNITY

NOMINATION SOUGHT

How would you like to be a change driver and positive influence in the development of the Port Sorell area?

The Port Sorell Advisory Committee (PSAC) is a special committee of Latrobe Council, comprising of representatives of key organisations from throughout the Port Sorell area.

Through PSAC, Latrobe Council seeks to gain an understanding of community issues and concerns and consult with the community on the good development of the Port Sorell, Hawley and Shearwater areas.

Currently, a vacancy exists for a community representative on this committee.

Applications are open to residents that can:

- attend and participate in quarterly meetings;
- involve the community by consulting and representing their views, concerns and issues rather than present your own personal opinion, individual view or interest; and
- act as a two-way communication link between Latrobe Council, PSAC and the broader community, ensuring the community is well informed and the decision-making process is transparent.

A positive attitude to community participation, including valuing the knowledge of community members, is important in effective partnerships with communities in decision-making processes.

If this sounds like you and especially if you are not currently represented by member organisations, please contact Sarah Cairns at the Latrobe Council office on 6426 4444.

ROUNDABOUT U-TURNS OPTIMISE TRAFFIC FLOW

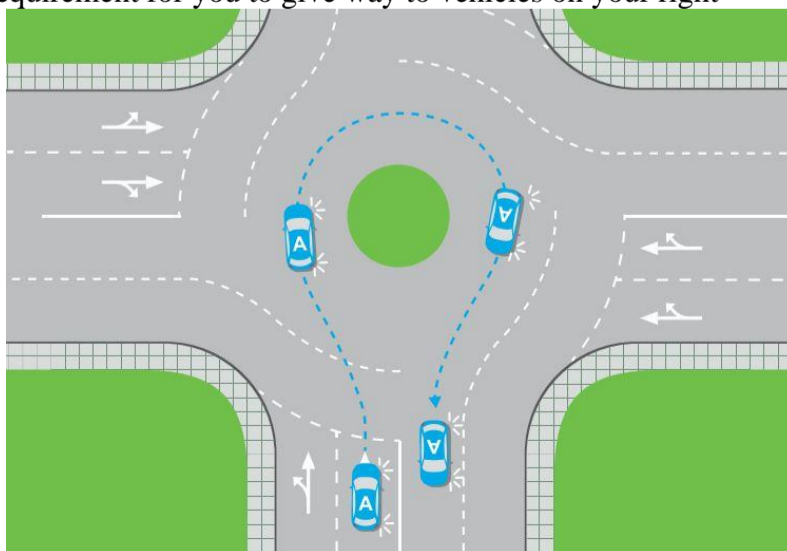
Have you ever wondered about the right way to navigate through a roundabout? Roundabouts significantly increase road safety and improve traffic flow by directing drivers to fluidly move around a central traffic island however most readers are probably using them incorrectly and, consequently, teaching future generations the same way.

Ideally, there is minimal “stop” and “start” at a roundabout.

When entering a roundabout, you must give way to **any vehicle that is already in the roundabout**. There is no requirement for you to give way to vehicles on your right

that have not yet entered the roundabout. If you were to stop and wait for a vehicle on your right to approach, enter and proceed through the roundabout, people could start to queue behind you. This is not the intention of a roundabout.

On approaching a roundabout, drivers must slow or stop to give way and use their indicator if they intend to turn left or



right or make a U-turn at the roundabout. You should indicate left when exiting the roundabout, where practical. The important thing is that you must give other road users sufficient notice of your intent to turn.

The U-turn option at roundabouts is however underutilised.

This is especially relevant in Latrobe, where there are three roundabouts along Gilbert Street. Many motorists continue to bank up traffic by attempting to turn right from the left lane.

This is further exacerbated when someone in that lane also wants to cross over their already banked up lane.

This situation could be avoided if the turning vehicle/s had simply continued to the nearest roundabout and completed a U-turn; putting them on the same side of the street that they want to turn into.

Source: Tasmanian Road Rules Handbook



Tasmania prides itself on its clean air, water and land, yet litter is often visible in our parks, reserves and roadsides.

Not only is litter unappealing, but it also ends up in our waterways and in the ocean. Reducing and preventing littering and dumping is everyone's responsibility: governments, businesses and individuals. The Environment Protection Authority (EPA) Tasmania has established a Report Rubbish web portal, enabling you to easily report litter and dumping on public land on your smartphone, tablet, and computer via <https://bit.ly/3HHIGKh>.

This simple web application requests information about the type, quantity and location of litter and forwards the report automatically to the relevant land manager.

The EPA acknowledge that this improved reporting mechanism may result in additional impost on land managers in responding to such reports. It has therefore partnered with the Department of Justice to provide an allocation of labour and support for rubbish clean-up activities from Community Corrections through the Community Service Order scheme. As well as addressing litter hot spots, this partnership can be extended to provide a regular regime of cleaning up litter by people on Community Service Orders.

TOURISM GATEWAY FOCUS

Local Government and tourism representatives recently attended a briefing on the Department of State Growth's "Gateway Project".

The Tasmanian Government has allocated \$2.66m to each region, over five years, to support Tasmania's visitor economy with upgrades to state roads at key entry and tourism points to Tasmania.

Additional consideration is also being given to improving wayfinding to tourism features in the region.

Improving the amenity at these entry points seeks to incorporate and reflect each region's unique character, beauty, and opportunities.

While the focus is on the cities, the North West coast could potentially be viewed as a "linear city", incorporating towns adjacent to the major cities such as Latrobe and Ulverstone.

Delivery of the Gateway Project is expected to start in early 2022.

SAFE CHEMICAL DISPOSAL

Unused chemicals pose a risk in landfills and are not permitted in kerbside recycling. Fortunately, a special opportunity is being provided so you can safely clean out old and unwanted laundry, hobby, home and garden chemicals at the Port Sorell Waste Transfer Station on Thursday, 10 March, from 12 noon until 4:00pm.

Items accepted include solvents and household cleaners, floor care products, ammonia-based cleaners, pesticides and herbicides, poisons, pool chemicals, hobby chemicals, acids and alkalis.

NOT permitted for disposal are motor oil, asbestos, pharmaceuticals, farm vet chemicals, fire extinguishers, ammunition and explosives, and chemicals from commercial businesses.

For safety reasons, early and late drop-offs cannot be accepted, and each item must be no larger than 20 kilograms or 20 litres.

This free event is the best way to dispose of household chemicals that are no longer needed or are beyond their use-by date.

The Port Sorell Waste Transfer Station is located at Hawk Hill Road, Shearwater.

KALIBA IS LIVE!

The Kentish and Latrobe Independent Business Association (KaLIBA) is now operational following the first meetings of its Board of Management.

As a not-for-profit incorporated association, KaLIBA is dedicated to supporting local businesses in the Latrobe and Kentish municipalities for their wellbeing and prosperity.

All businesses across the Latrobe and Kentish Municipalities are automatically free members of the Association.

KaLIBA is working on a portfolio of benefits to deliver business support, education, promotion, lobbying, networking, and mentoring, and will engage with all businesses to create a united voice to foster increased economic activity for the benefit of businesses and communities.

To be the voice of business, KaLIBA has sent the first of what will be ongoing surveys so local businesspeople can inform the Association which programs and projects best meet their needs. This feedback will chart the future direction of business support programs and directly assist the prosperity of all local businesses.

KaLIBA is now regularly communicating by email to around 500 local business people and stakeholders. If you are not receiving these communications, please register as a free member, to get access to the zero-cost projects, support, expert services and events being developed.

If you are not receiving KaLIBA communications, please contact its Executive Officer, Gordon Williams, at gordon.williams@kaliba.org.au

PREPARING FOR SCHOOL

While you will be reading this newsletter before school even breaks for Summer, time flies when on holiday.

The following are important dates to ensure students are ready for their return to the 2022 school year -

Book sales	Term 1 starts
Andrews Creek Primary School 1 Feb	9 Feb
Geneva Christian College NA	8 Feb
Latrobe High School 18-20 Jan	9 Feb
Latrobe Primary School 21 Jan & 1 Feb	9 Feb
Port Sorell Primary School 28 Jan	9 Feb
Sassafras Primary School 27-28 Jan	9 Feb
St Patrick's Catholic Primary School NA	3 Feb

AMBASSADORS SHARE TOURISM KNOWLEDGE

Ambassadors at the Latrobe Visitor Information Centre prides themselves on their knowledge of Latrobe and Port Sorell however, they are equally at ease with information regarding other tourism opportunities and destinations across Tasmania.

Meet and discuss travel plans with the friendly team of Ambassadors, some of whom have been serving visitors and locals for close to two decades. Browse through the extensive range of brochures and maps from locations and attractions across Tasmania. The Visitor Information Centre will soon sell Parks passes as well! Whether you need recommendations for bookings, advice on where to travel, formulate an itinerary, find out what the "must-see's and must-do's" are, or just have a chat - the Latrobe Visitor Information Centre is there to help.

The Centre at 21 George Street is open from 9:00am until 3:00pm Monday to Friday and 10:00am until 2:00pm on Saturday and Sunday.

While at the Centre enjoy the artwork of members of the Rubicon River Arts. If an in-person visit isn't possible, phone 6426 2240 or email tourism@latrobe.tas.gov.au for remote assistance.

CONNECTING COMMUNITY

The Meet, Greet and Eat social evenings are continuing at the Wesley Vale Community Church Hall during the daylight-saving months, on the third Friday of each month from 6.30pm. Bring a plate to share. Tea, coffee etc., are provided. Children are most welcome. The evenings are free with plenty of parking available.

Please do not attend if you are feeling unwell or experiencing cold or flu-like symptoms.

FESTIVITIES AT STRATHDEVON

The festive season lived up to its name for residents at the Uniting AgeWell Latrobe Community Strathdevon.

Not only were residents treated to performances by the Joybells and the Grey Nomads, they also attended a live-streamed performance by the Tasmanian Symphony Orchestra (TSO). Because Uniting AgeWell and the TSO are long-standing partners, classical concerts are regularly live streamed on the big screen for residents to appreciate.

One of the main events in December was a visit from therapy pony Stella Bella. Residents took great joy in patting and stroking the pony, which in turn basks in all the attention.

Christmas is always festive with artwork themed to 'The 12 days of Christmas' created to decorate the front window of Kids on Gilbert at 148 Gilbert Street, Latrobe, part of the Lions Club of Latrobe Decorated Window Competition to encourage people into the CBD for Christmas.

Then, of course, there was the feast on Christmas Day with all the festive trimmings. One thing's for sure; there's never a dull moment at Strathdevon!

COMING EXHIBITIONS

An exhibition by James Killian and Anna Waters titled "Wild Wings" and "Floral Fantasy" is being held at The Crowded Lounge, 127-129 Gilbert Street, Latrobe throughout January.

James Killian has always painted but has recently focussed on it more.

His first career path was as a horticulturist who essentially grew up in New Zealand. He says the inspiration for his paintings comes from his vivid childhood memories of visiting family in Samoa.

Anna demonstrates beautiful 3D landscapes that look like they are growing. With visual and practical benefits to any indoor space, she draws on her skills as a florist and memories of her Nan's award-winning Tasmanian garden.

'My Flora Gardens' offer greenery and colour without the costs, fuss or time to keep it looking perfect.

For February, The Crowded Lounge are seeking interest from photographers to exhibit in a collective display. If you are interested in sharing your images, please contact Michelle at The Crowded Lounge on 0459 239 192.

Art classes are continuing for beginners and seniors with after-school classes commencing when school returns. If you are looking to meet with clients or hold small corporate meetings, The Crowded Lounge offers a meeting room facility. With seating for up to nine people ensuring COVID-19 compliance; catering is also an option. For more information, contact the Crowded Lounge on 0404 223 929.

MISSING FAMILY PHOTOS

The 'Missing Family' wedding photo is at the Tasmanian Family History Society Inc. (TFHS) Mersey Branch - the house behind the Latrobe library. If these are your ancestors, please come and see staff. It will be a pleasure to return the photo to their family.

TFHS is also trying to track down a member of the 'Rudd' family regarding two testimonials, one for Robert J Rudd in 1884 & R R C Rudd 1931. These are beautifully drawn and need a home too.

This year TFHS will be opening on Wednesdays as well as Fridays from 10:00am until 3:00pm starting from Friday, 7 January. TFHS looks forward to seeing you.

If you have any TFHS enquiries, please phone Sue Ellen 6428 6328 or Ros 0476 008 531.

KUDOS FOR CLUB

Port Sorell Table Tennis Club (PSTTC) Coach Christa Foulis is conducting a specialised table tennis program at the Banksia Centre for girls aged between 5-12 years.

The program - 'My Gender, My Strength' - was initiated by the International Table Tennis Federation under the auspices of Table Tennis Australia and the Port Sorell Table Tennis Club.

The Club is one of only five table tennis clubs to be selected in Australia, and the only one in Tasmania, to run this program. Female Coaches are presenting these programs.

'My Gender My Strength' has been enthusiastically received by the girls. It is hoped the program will serve to give girls new skills and build their confidence to take on new and bigger challenges in their lives ahead.

Anyone, young or old, interested in playing or learning to play table tennis is welcome to contact Christa at PSTTC on 0400 841 121.

100 YEARS OF PIGEON RACING

In May 2022, the Latrobe Homing Society will celebrate 100 years of pigeon racing in the Latrobe Council area.

An Advocate newspaper dated 1926 portrayed a large and thriving pigeon club and describes the Latrobe Homing Society as the leading club in Tasmania and one of the best in Australia. There is anecdotal evidence that dates the Club back to 1922. The original committee featured some familiar names, including E.G. Broomhall, C Gardner, W Collins, J Munro, J Lucas, J Broomhall and G Boatwright. Some of these surnames still run strong in Latrobe today.

The current committee and members are in the process of refurbishing the Clubrooms in readiness for the centenary celebrations in 2022.

While the Club does not know the history of the different club rooms provided by Latrobe Council over the past 100 years, they can only assume that it was varied and different to where they are now. During the past 100 years, the Latrobe Homing Society and the sport of pigeon racing has changed dramatically however the journey has been successful thanks to the ongoing support from sponsors and the Latrobe Council.

WORKSHOP PROGRAM REVEALED

The Latrobe Arts Hub Gallery at 21 George Street, Latrobe is filling up with small and large artworks. New members



Rubicon River Arts Inc.

are also exhibiting works, which add to the variety on display. Rubicon River Arts (RRA) also now have EFTPOS available for purchases.

As the Gallery is manned by volunteers, it is prudent to check opening times by emailing rubicon-river-arts@googlegroups.com.

Despite COVID-19 limiting interstate visitors, RRA completed a wonderfully successful year and looks forward to 2022 being even better, not only for the Gallery but for the community generally.

Already our workshop program includes workshops by Rasa Dunlop and Kim O'Brien with more to be added as they are confirmed, such as Shibori, basket making, acrylic resin pouring, improving your digital platform and presence in the digital world, and introducing watercolour.

The first meeting of RRA will be held on 15 February.

Membership fees will be due at or before the meeting. New members are very welcome.

TENNIS FOR ALL AGES

If you are interested or new to the area and want to dust off your tennis racquet, the Port Sorell Tennis Club holds weekly social doubles on Monday, Tuesday, and Wednesday nights from 6:00pm. The cost is \$40 for 8 weeks with the next roster commencing on 7 February.

Additionally, junior tennis group coaching sessions are held weekly on Thursday nights for children aged 5-16, commencing week 2 of the school year.

If you are interested in these, please contact Peter Georgiades on 0439 637 301.

The club has successfully expanded into hosting weekly Pickleball roster at the Banksia Centre on a Friday night from 6:00pm. Cost is \$5 per person with all ages welcome.

You can find more details about the Port Sorell Tennis Club on Facebook or visit the website: www.play.tennis.com.au/portsorelltennisclub or email portsorelltennisclub@hotmail.com.

SEEDLAB SISTERS

With support from Cradle Coast Authority, and funding from the State Government, a group of inspiring entrepreneurial Tasmanian women are thrilled to announce: Seedlab Sisters Cradle Coast will commence in early 2022. This will build on the success of Seedlab Tasmania, which has supported over 100 start-up agri-food and agri-tourism businesses State-wide over the last two years, with around 15 based in the North-West. The program will provide Inspirational Workshops throughout 2022 in the North-West to inspire, inform and connect women who are passionate about agri-food, with the tools to help them develop their ideas, know where to start, and support them to build diverse businesses. The program has been awarded a grant of \$179,400 under the Tasmanian Government's Supporting women to Succeed Grants Program 2021. The project will focus on nine council areas of West and North-West Tasmania. Registrations of interest in participating will shortly open at www.seedlabt Tasmania.com.au. For more information contact either reversole@swin.edu.au or hazel@seedlabt Tasmania.com.au

NEIGHBOUR DAY

Loneliness and social isolation continue to affect the health and wellbeing of Australians, with Relationships Australia seeking your help to shift the tide to building respectful relationships and strong communities.

Research shows that communities where people know each other have better mental health, are safer for children, and are more resilient generally.

Sunday, 27 March marks the 20th anniversary of Neighbour Day.

Relationships Australia offer a multitude of ideas/tips and downloadable resources of resources at <http://neighbourday.org/>. To support Neighbourhood gatherings, Council is pleased to offer a Neighbour Day branded prize packs - consisting of a drink container, pencils, connection postcards, stickers, a small bag and tea towel - to the first five Neighbourhood Day initiatives registered in the Latrobe Council area on neighbourday.org/get-involved/.

VOLUNTEERS SOUGHT

The Rotary Club of Latrobe is busy preparing for Henley-on-Mersey during January in partnership with the Lions Club of Latrobe and supported by Latrobe Council.

This event does however need your help. If you can assist with a few hours volunteering to run a few fun activities, please contact John on 0457 883 006 for more information.

Future plans for Rotary include another Trivia Night and a Car Boot Sale. Keep an eye on their Facebook page for all the details of when and where - <https://www.facebook.com/Rotary-Club-Of-Latrobe-330425567015230>.

If you are a business or professional leader with an interest in humanitarian service, have high ethical standards in all vocations, and can help build goodwill and peace locally and throughout the world, you may be interested in becoming a member of the Rotary Club of Latrobe. Email info@rcol.org.au for more information.

HERITAGE AND TOURISM

The Port Sorell History group will now be known as Port Sorell Heritage and Tourism. The decision to change the name is to reflect the natural and manmade attributes of the area.

The recent installation of Stage 1 of the "Explore our Heritage" heritage trail is a great example of how the group plans to share the history of Port Sorell and the surrounding areas.

Other installations, such as storytelling and tours, are intended to combine the experience of exploring the regions natural assets with history and stories from the area.

Port Sorell Heritage and Tourism group meet on the 3rd Monday of each month from 3:00 pm at the Port Sorell Men's Shed, 14 Burgess Way, Shearwater. Meetings will reconvene in February 2022. Contact Mary on 0407 045 458 for more information.

YOUR NBN DOWNLOAD SPEED

During the 2021 restrictions, Australians stayed connected to one another via video calls with loved ones and co-workers, online lectures, streaming, and gaming. The average Australian household has likely spent more time online this year than ever before.

With restrictions easing, it may be time to re-evaluate your needs and internet plan. Those looking to test their internet speeds can do so at www.reviews.org/au/internet/nbn-internet-speed-test/

Why is this important?

Tasmanians should be informed on what internet speeds they are paying for and what they're getting. If your internet speed is not suitable for your needs, you may choose a new plan to fit your needs better.

LIBRARY APP RELEASE

Libraries Tasmania now has a lending App! The free App provides you with easy access to the library and is available for download on iOS and Android smartphones and tablets.

With the Libraries Tasmania App, you can search and find lending materials in the Libraries Tasmania collection, sign into your account to view your loans and renew them, and place or manage holds.

You can also link your family's cards, access your digital library card, scan and search for ISBNs and locate your nearest library to find their opening hours and contact details.

If you need help downloading the App, call in and chat to staff at the library within the Public Buildings in Gilbert Street, Latrobe.

The opening hours for the Latrobe Library are 1:00-5:00pm every Monday, Tuesday, Thursday and Friday.

FASTEST GROWTH SPORT

Pickleball is often referred to as 'the fastest growing sport globally that no one has ever heard of'. If recent statistics reflecting the growth in Tasmania alone are anything to go by, then this statement is certainly true.

The game's popularity has grown dramatically in less than six months, culminating in the inaugural North vs South Tournament in Launceston last October.

The North was represented by players from Port Sorell, Launceston, Swansea and George Town. The whole event was a fabulous success, including the presentation party, which did indeed see some sweetly pickled participants!

Pickleball is a social, fun sport that combines elements of badminton, table tennis, and tennis. It attracts players from all age groups, even those who don't consider themselves at all sporty! This is all made possible thanks to generous sponsors for their support - Brewstone Café, Roosters Rest Bed and Breakfast, Rocky Gardens Café and Latrobe Council. A shout too to the staff at Camp Banksia.

Port Sorell Pickleball look forward to 2022 and hope everyone will have more opportunities to get out and "get pickled"!

CROQUET SUCCESS

2021 was another successful year for the Latrobe Croquet Club. In October, Latrobe member Curtis Mead won the Tasmanian Under 21 State Championships.

Also, in October, the Club held its Doubles Championships, with Division Two won by Marie Day and Robyn Lamprey and the Open Division won by Chris West and Patsy Paine.

In early November, the Club once again hosted students from Latrobe High School. This was the third visit from the school, and the numbers have increased with each successive visit. This time there were 32 students and two teachers. Club volunteers found it a pleasure to work with such polite and friendly young people.

In early December, the Club held its annual Christmas lunch at the Thirlstane Golf Club.

Croquet can be played at any level, either competitively or socially, so why not come and give it a go. The first three

introductory sessions are free, and all equipment is supplied. Call Chris on 0499 990 239 if you would like to try.

BOOKS, BARBIES AND WATERSLIDE

The Port Sorell Lions Club remind readers that they will be serving barbecue delights at Bunnings on 2 January. It's well known that a greasy snag hits the spot and helps

cure any holiday overindulgence! This is followed by Lions Club members greeting patrons at the gates at the Devonport Harness racing on 15 January. A word of warning though, don't listen to any free tip given by them, especially the member that is not there at the conclusion of the evening!

Another Book Sale and BBQ at the Port Sorell Memorial Hall is planned for 22 January so make sure to circle that date on

your calendar so you can refresh your summer reading supplies.

COVID-19 restrictions permitting, the Club will be resurrecting the popular Australia Day Waterslide and Car Show on 26 January at Meredith Street, Port Sorell from 9.00 am. More details about this on the back page.

For more information about the Port Sorell Lions Club, please contact either Neil on 0411 222 432 or Denzil on 0467 286 234.

COMING EVENTS

COVID-19 safe requirements continue to be in effect. When attending an event, please comply with COVID requirements as directed by the event host.

DECEMBER

- 13 Latrobe Council Meeting** at the Latrobe Council Chambers, 170 Gilbert Street, Latrobe commencing at 5.00pm. All welcome. ☎ 6426 4444.
- 13 Latrobe Council Annual General Meeting** follows the monthly general meeting at the Latrobe Council Chambers, 170 Gilbert Street, Latrobe. All welcome. ☎ 6426 4444
- 18 Shearwater Village Market** at 8 Club Drive, Shearwater from 9:00am until 1:00pm. ☎ 0467 580 270
- 19 Latrobe Lions Walking Christmas Parade and Carols** from 6:30pm at the Latrobe Recreation Ground, Gilbert Street, Latrobe. Gates open from 5:00pm. Numbers limited. More info: www.facebook.com/latrobelionsclub.
- 19 Christmas Carol Service** at the Wesley Vale Community Church, Port Sorell Main Road, Wesley Vale and led by Ben James from 7:00pm. All welcome.
- 24 Santa's Tour of Port Sorell** with the Port Sorell Fire Brigade. Route and timings at <https://bit.ly/3DxwPf5>
- 24 Christmas Banquet Pickups** from Tranquilles, Gumbowie Drive, Port Sorell. Order your Christmas Banquet: Family of 4 - \$150.00; Family of 6 - \$210.00 or Family of 8 - \$260.00. Order at 6428 7555 or 0415 723 874
- 27 Latrobe Speedway** featuring Sprintcars, Super Sedans, Street Stocks, Junior Sedans and Wingless Sprints at Speedway Dr, Latrobe. Gates open at 3:00pm; infield racing from 4:00pm; main track from 6:00pm. Costs apply.
- 28 Market by the Beach** at the Port Sorell Surf Life Saving Club commencing from 5:00pm. Enquiries to marketbythebeach1617@yahoo.com
- 31 Acoustic Duo** live at Shearwater Resort from 6:00pm then **Leonard 'n Tome Band** from 9:30pm until 1:00pm. Enquiries to 6428 6205

JANUARY

Dual Exhibition by James Killian and Anna Waters titled "Wild Wings" and "Floral Fantasy" at The Crowded Lounge,

127-129 Gilbert Street, Latrobe. Refer to separate article.

- 7 Tasmanian Family History Society Mersey Branch** resumes
- 7 Market by the Beach** at the Port Sorell Surf Life Saving Club commencing from 5:00pm. Enquiries to marketbythebeach1617@yahoo.com
- 8 Shearwater Village Market** at 8 Club Drive, Shearwater from 9:00am until 1:00pm. ☎ 0467 580 270
- 8 Moriarty Reubaix Cycling Road Race** from 11:00am until 3:30pm along Frankford Road, Moriarty Road and Hermitage Lane. ☎ 0417 582 266
- 8 Devonport Anglers Club Twilight Junior Fishout Day** at Taylor's Dam, opposite the House of Anvers Chocolate Factory, Bass Hwy, Latrobe from 3:00pm until 8:00pm. Date subject to change. For more information, go to www.facebook.com/juniorfishingtasmania
- 14 Market by the Beach** at the Port Sorell Surf Life Saving Club commencing from 5:00pm. Enquiries to marketbythebeach1617@yahoo.com
- 14-15 Super Sedan Grand Prix** along with Tassie Sizes, Street Stocks, AMCA and Wingless Sprints on night 1 and Street Stocks, Formula 500's, AMCA and Modifieds on night 2. Latrobe Speedway at Speedway Drive, Latrobe. Gates open at 3:00pm; infield racing from 4:00pm; main track from 6:00pm. Costs apply.
- 15 Shearwater Village Market** at 8 Club Drive, Shearwater from 9:00am until 1:00pm. ☎ 0467 580 270
- 15 Beginning Weaving Workshop** with Rasa Dunlop. For more information, email rubicon-river-arts@googlegroups.com
- 22 Book Sale and BBQ** at the Port Sorell Memorial Hall from 8:30am until 3:30pm. ☎ 0419 162 691
- 22 Shearwater Village Market** at 8 Club Drive, Shearwater from 9:00am until 1:00pm. ☎ 0467 580 270
- 22-23 Latrobe Liliu Show** at the Latrobe Memorial Hall, Gilbert Street, Latrobe. Open Saturday 1:00pm until 4:00pm and Sunday from 10:00am until 4:00pm. ☎ 6435 1298

- 26 Henley-on-Mersey Australia Day Festival** at Bells Parade, Latrobe. Gates open at 8:30am, activities start from 9:00am through to 3.30pm. ☎ 0438 24 11 29
- 26 Australia Day Waterslide and Classic Cars** at Meredith Street, Port Sorell from 9:00am. ☎ 0419 162 691
- 28-29 Australian Super Sedan Title** along with Street Stocks, Formula 500s and Wingless Sprints on night 1 and Street Stocks, Formula 500's and Tassie Sixes on night 2. Latrobe Speedway at Speedway Drive, Latrobe. Gates open at 3:00pm; infield racing from 4:00pm; main track from 6:00pm. Costs apply.

FEBRUARY

- 1 Resumption of Latrobe Senior Citizens Club for 2022** at Hamilton Hub, 18 Hamilton Street, Latrobe. All welcome.
- 3 St Patrick's School Term 1 commences**
- 8 Geneva School Term 1 commences**
- 9 Education Department Term 1 commences**
- 12 Latrobe Speedway** featuring Sprintcars, AMCA, Modifieds, Street Stock, Formula 500's and Wingless Sprints at Speedway Drive, Latrobe. Gates open at 3:00pm; infield racing from 4:00pm; main track from 6:00pm. Costs apply.
- 12 Devonport Anglers Club Twilight Junior Fishout Day** at Taylor's Dam, opposite the House of Anvers Chocolate Factory, Bass Hwy, Latrobe from 3:00pm until 8:00pm. Date subject to change. For more information, go to www.facebook.com/juniorfishingtasmania
- 12 Midnight Messengers** live at Shearwater Resort from 6:30pm until 10:00pm. This will be a ticketed event. Enquiries to 6428 6205
- 25 Neil Gibson** live at Shearwater Resort from 6:00pm until 9:30pm. Enquiries to 6428 6205

MARCH

- 1 Business Clean Up Day**
- 4 Schools Clean Up Day**
- 6 Clean Up Australia Day**

CELEBRATING AUSTRALIA DAY

January has arrived and with that comes Australia Day on the 26th. A day that we reflect on what we love about living in Australia and take the time to revel in that.

At Port Sorell, the waterslide down the Port Sorell Bowls Club hillside in Meredith Street runs from 9.00am until 11.30am. Simultaneously, an Aussie Car Display along with barbecue fare and pancakes are also hosted by the Port Sorell Lions Club. The major celebration of Australia Day for the Latrobe Council area, though many say for Tasmania, is the Henley-on-Mersey Australia Day Festival at Bells Parade, Latrobe from 9:00am until 3.30pm.

This festival features much of the quirkiness that other nationalities endear about Australians. Relax and view the numerous activities or “have a go” at the abundance of competitions and win fantastic prizes and potentially boasting rights.

Try belting out a tune on the Thongaphone, try archery, novelty events, disc golf, gumboot tossing and egg throwing. How are you at hobby horse dressage? Will your ferret win the race? Check out the canoe antics on the river. There are classic cars and historic machinery on display as well as musical entertainment by the Latrobe Federal Band. The competitiveness of wood chopping will have you amazed and the extreme bicycle stunts by Borys Zagrocki will leave you gasping.

Latrobe Council’s Australia Day Citizen of the Year, Young Citizen of the Year and Community Event of the Year will be presented at Henley-on-Mersey, reverting to the former time of midday.

At the time of writing, preliminary advice had been received that the Australia Day Ambassador for Henley-on-Mersey would be Mr Mitch McPherson.

Few people have the drive and dedication of Mitch McPherson. When

his younger brother Ty took his own life in 2013, Mitch, a glazier by trade, turned the devastating loss into the successful suicide prevention charity SPEAK UP! Stay ChatTY. Mr McPherson will undoubtedly inspire many with his Australia Day address.

To assist the festival to maintain COVID-19 compliance, additional measures will be in place, including a reconfiguration of the site to ensure queues maintain 1.5m distancing; additional amenities and cleaning as well as a large screen to enable patrons to spread out seating to view the wood chopping and other activities.

The event this year will also be ticketed with details continuing to be updated at www.henleyonmersey.com.au or www.facebook.com/HenleyonMersey/ The final event on Australia Day is a Citizenship Ceremony at Hamilton Hub, 18 Hamilton Street, Latrobe.

Commencing at 3:00pm, this ceremony will see the investiture of six new citizens as they take their pledge of Australian citizenship. This event is free to attend however bookings will be required. Watch out for more details.

So how are you planning to celebrate this recognition of our Australian identity, as it has expanded culturally over many years?

FUTURE EDITIONS

Article deadlines and distribution dates are provided to assist contributors with their forward planning promotion -

Deadline.....	Edition
3 Feb	Mar-Apr
24 Mar	May-June
2 June.....	July-Aug
4 Aug	Sept-Oct
6 Oct	Nov-Dec

Contributions must be relevant to the Latrobe Municipality and suitable for inclusion. They will be used at the discretion of the editor, in whole or part in the next or future editions. Council does not pay for editorial submitted.

Articles may be submitted to the editor by the relevant deadline date via email to council@latrobe.tas.gov.au or posting to Latrobe Council, P O Box 63, Latrobe, 7307.

DISCLAIMER

Although all care has been taken to ensure that information contained in this newsletter is true and correct at the time of printing, Latrobe Council gives no warranty or assurance, and makes no representation as to the accuracy or reliability of any information or advice contained in the newsletter, or that it is suitable for your intended use. The publication of articles supplied by external organisations does not imply any form of endorsement by Latrobe Council.

