



GOING, GOING, GONE

Going, going, gone seems to be the way vacant shops are heading in Shearwater Village with three new businesses recently defying the national doom and gloom of starting a small business during COVID. Quinlan SAS (SAS standing for Street Art Style) is a funky new mixed arts studio established collaboratively by Tara Felts, Phil Dutton and Maya Aleksa at 2/4 Quinlan Crescent, Shearwater. Within Quinlan SAS, you will find a tattooist/street artist; graphic designer/tattooist and nail artist/jeweller. This isn't your stereotypical tattoo studio though, with walls plastered with tattoo designs. Instead, they will spend time with a client to create a design unique to the customer's personality. While they love being creative with unique tattoos, Tara and Phil are also skilled with tattoo corrections and overlay tattoos where the client has had lasering. Phil's skill in graphic design extends from logos to posters through to signage and branding. He plans to progressively expand into the sale of specialised art supplies and unique aerosols. This links with Tara's street art creds with her skill prominently displayed on several buildings throughout Devonport. Tara and Phil met Maya through a collaborative RANT (Regional Arts Network Tasmania) exhibition. Maya is trained as a nail technologist and hand makes original, abalone infused jewellery and has recently started in clay jewellery. "I wanted to work in a business where I could be creative with my hands but also connect with people. This took me in two directions - study as a nail technologist with a focus on nail health and the jewellery making where industry and nature come together. For the past eight years these have been hobbies with the timing just right now to join Tara and Phil at Quinlan SAS," said Maya. Collectively, the team at Quinlan SAS seek to engage the community in multiple arts activities and make personal connections so swing by, have a chat, and welcome them to the community.



Pictured: Maya Aleksa, Phil Dutton and Tara Felts - the talent behind Quinlan SAS

At 2-4 Club Drive, Shearwater, Anita Mulligan is providing a busy dog wash and grooming service at The Grooming Diva. Trained under a master groomer, Anita owned a mobile business in Melbourne but, when COVID-19 hit, relocated to Tasmania to be closer to family. "I like the Tasmanian lifestyle and found the shop quite by accident. The Port Sorell area is a beautiful spot," said Anita. "I've been fortunate to have been booked out since opening a couple of months ago. I even had people trying to book before my doors were open. I'm quite pedantic with the skills I've developed and that shows in how my clients look when they leave here," she added. First time client, Mrs Williams agreed that her dog Emmi was looking terrific, adding "This is great for Shearwater. It's good to see business confidence and diversity."

Chia Podiatry Clinic will soon open at Shop 2, 8 Quinlan Crescent, Shearwater. Yuh Xin Chia (pronounced "U sing") said that "opening my own podiatry clinic fulfills a childhood dream to work in the health industry in a profession where I can help people and have the skill to provide holistic care, meeting the individual needs of my clients." Services include routine foot care; ingrown toe-nail surgery; diabetes foot assessment and wound management; pediatric assessment and management; diagnosis and treatment of sports and neuromusculoskeletal injuries; footwear advice and orthotic prescription; some adjunct therapies such a dry needling and deep massage; nursing home services and HICAPs services are available. Medicare and DVA referrals are accepted. Chia Podiatry Clinic will open Monday to Friday and cater for urgent cases on Saturdays.

YOUR ELECTED REPRESENTATIVES

Mayor Peter FRESHNEY0417 287 006
 D/Mayor Graeme BROWN..0417 598 116
 Shayne (Cush) ALLISON0409 792 648
 Michael McLAREN6426 2777
 Vonette MEAD0407 055 180
 Sommer METSKE0409 622 710
 Garry SIMS 0419 139 053
 Gerrad WICKS0488 325 590
 Lesley YOUNG.....0419 326 250

COUNCIL'S WORKS REPORT

The following works are scheduled to be undertaken throughout the Latrobe Municipality during November and December:

Civil Construction and Maintenance

- Tarleton Road reconstruction and widening
- Squeaking Point Road safety improvements
- Old Deloraine Rd safety improvements
- Warrawee carpark upgrade
- Moriarty Road - new footpath along western side between Forth Street and Torquay Road
- Resurfacing of parking bays in various areas in Shearwater
- Gravel road maintenance program
- Roadside spraying
- Rural roadside mowing program
- Stormwater pipe network upgrades at Sankey Street, Hawley

Town Services

- Shearwater Park - new shelter near playground
- General public building maintenance

Green Spaces

- Freers Beach - pedestrian access ramp upgrade at Freer Street
- Upgrades at Shearwater Waste Transfer Station to general waste disposal area
- Landscaping upgrades at Shearwater Industrial Estate
- Park mowing and spraying program

Should you have any queries in relation to the above works, please do not hesitate to contact Council's Operations Manager on 6426 4453.

SOCIAL MEDIA IMPLICATIONS

A recent Facebook defamation ruling by the High Court has determined that the owner of social media pages is legally responsible for user comments on their posts.

With social media being an integral part of everyday life and a 24/7 medium, this ruling also requires 24/7 moderation.

With an inability to resource this requirement, Latrobe Council has implemented changes that limit the ability to comment on Council's Facebook pages until further notice.

This means that we can still provide you with information that you can share but you just can't tag someone or publicly share your opinion.

Council encourages you to continue to have an open dialogue with Council by phoning 6426 4444, emailing council@latrobe.tas.gov.au or even calling into the Latrobe Council office at 170 Gilbert Street, Latrobe.

LATROBE FLOOD PROJECT

A lot of positive feedback for the alternative design proposal, that was presented to the community during August, has been received.

Council has engaged local construction company BridgePro Engineering to undertake the flood mitigation project based on this alternative design solution. Approvals for the revised design are currently being sought, with a construction commencement date proposed for January 2022, subject to approvals being received. In summary, the alternative design removes the need for a levee behind Kobie Lane and the concrete walls beside Kings Creek and replaces these with the Kings Creek Levee, Cotton Street Levee, Kings Park diversion structure and a box culvert running from Kings Park to Cotton Street. Once finalised, the plans will be made available on Latrobe Council's website.

CHANGES TO SPEED LIMITS

Residents are advised that the new 60km/hr speed limit for Parkers Ford Road, from the roundabout on Port Sorell Main Road through to Gardams Road,

along with Mill Dam Road and Charles Street at Squeaking Point is now in effect.

SANKEY STREET, HAWLEY

The stormwater improvement project to increase the pipe network capacity, due to a deficient overland flow path in the lower portion of Sankey Street, was awarded to ATM Civil Contracting.

Works commenced in October and are expected to take four weeks to complete, subject to weather and ground conditions. Road users are reminded of full and partial road closures during the works, and residents may incur some delays in accessing their properties. It is recommended through traffic avoid the area and take alternative routes. In the interest of safety, Council asks road users to comply with all signage and instructions given by the contractor's employees during the work.

HAWLEY ESPLANADE

SHARED PATH UPDATE

Revised plans for the shared path were tabled at Latrobe Council's August Meeting along with submissions received about the previous reversion.

The revised plans adopted by Council include the removal of the proposed car parking area in the vicinity of 'Little Beach' and the possible inclusion of a 60m long elevated walkway section. A copy of the revised plans can be viewed on Council's website: <https://bit.ly/3FfpWR3> These plans have been lodged with the Department of Primary Industries, Parks, Water and Environment (DPIPWE) as the first step in obtaining the necessary approvals and permits.

The approximate alignment has been temporarily marked out on site to assist with undertaking the detailed site assessments and survey.

Once complete, the detail will be finalised along with construction documentation. Depending on the timeframe of this process and availability of contractors, it is planned for construction to commence in the new year.

Latrobe Council thanks the community for their involvement and interest in this project.

SPEAK UP FOR ROAD WORKER SAFETY

While you might be tempted to complain about the number of worksites on our roads and grumble about having to slow down, it is a good thing. Road surfaces degrade over time and require maintenance and repair.

While road crews undergo extensive safety training and use safety procedures, they are generally only separated from motorists by an orange safety cone, a concrete barrier, or nothing at all.

MY DADDY WORKS HERE

Slow down for road workers.



If you've ever been tempted to dismiss the terrifying nature of this type of work, try spending all day next to vehicles zooming by every few seconds, especially in the dark and rain.

Just one error can change a driver, passenger, or road worker's life forever. That's why knowing how to navigate a road works site and obey speed limits and warning signs is so important. At the end of the day, the daddies and mummies working on our road crews deserve to arrive home safely to their families.

HARVEST JOBS - TAKE YOUR PICK

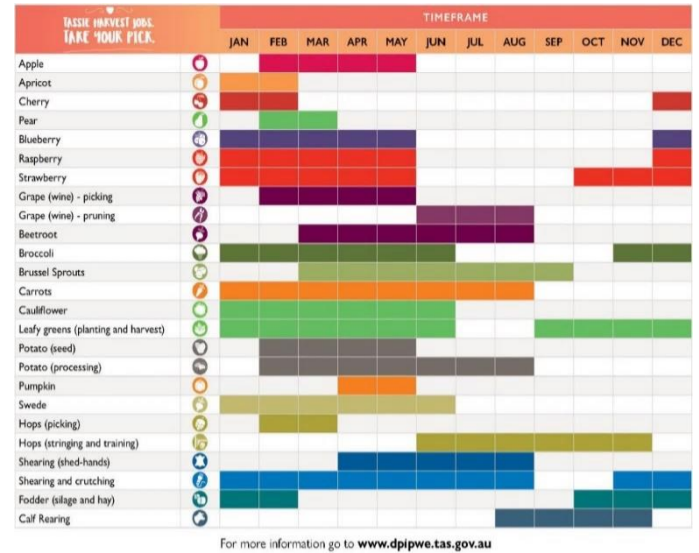
Tasmania's peak harvesting period occurs from December to March each year and usually requires about 9,000 seasonal workers.

While Tasmanians are prioritised to fill the picking, sorting, packing, driving, and pruning positions to ensure an effective workforce, local food security, job security and keeping our key local agricultural economy going, there may not be enough job seekers to fill the vacancies. To manage the expected shortfall, experienced seasonal workers from out of state are employed. Their management and housing is based on public health advice and can only proceed in a COVID-19 safe way.

To find out more about harvest work opportunities that are available now and over the coming months visit <https://dpiwwe.tas.gov.au/harvest-jobs>

On the Harvest Trail website use the 'Filter by' location option under the map and select TAS to find your Tassie harvest job.

To speak directly with someone about job opportunities and how to register for jobs call the Harvest Trail Information Service on 1800 062 332.



VOLUNTEERING - BE CONNECTED

Volunteering is a vibrant and economically significant part of our community.

All volunteers are a vital part of connecting and contributing to our communities, and across the state they are relied on to strengthen support services and program delivery, as well as drive a range of community activities and help in times of need. It's also good for you. The nature of our communities and the ways in which people connect and support each other through volunteering is changing though.

With community needs and demographic shifts already impacting volunteer supply and demand, it is imperative steps are taken now to ensure a robust and adaptable local volunteering workforce remains a vibrant part of our community.

If the decline in volunteering (0.7% annually) remains consistent with current trends, Volunteering Tasmania estimates that the Latrobe Council area will have a shortfall of 2,683 volunteers aged 15+ by 2029. This decrease will have a very serious impact on community services and events going forward.

For many organisations, they may find their service provision unsustainable.

Our demographics will also influence volunteering with 40% of volunteers expected in welfare and community services (predominantly aged and disability services) by 2029.

Source: *Volunteering Tasmania*

WHEEL RACE DISPLAY

The Court House Museum in Gilbert Street, Latrobe is presently showing a display of photographs and memorabilia about the annual Cycling Carnival and the famous Wheel Race.

If anyone in the community has anything to donate to the Museum or to lend for the display, please contact the Museum on 6426 1289, or call in on Tuesday to Friday 1.30pm to 3.30pm and leave your name and contact details.

RETURN TO DEBT COLLECTION PROCESS

Throughout the peak of COVID-19, Latrobe Council paused its debt recovery collection processes in response to potential economic hardship.

Following a review of this financial support reflecting that the non-payment of accounts were predominantly by those with a pre-COVID history of non-payment, Council has now reimplemented its normal collection process.

Council understands that there are genuine cases of financial hardship. If this is relevant to you, please speak to our Finance Team to discuss a payment plan. You will still have to pay your account with Council however, an arrangement may be able to be implemented that gives those with legitimate reasons longer to pay.

Council's Finance Team are reachable on 6426 4444.

BLACKSPOT FUNDING

Council has nominated the intersection of Gilbert and Percival Streets, Latrobe for the construction of a roundabout under the Australian Government's 2022-23 Black Spot Program.

The Black Spot Program funds the treatment of roads and sites which have a proven crash history or have been identified as an 'accident waiting to happen' by a road safety audit.

The aim of the program is to reduce the risk of crashes, and such treatments include the installation of traffic signals and roundabouts.

An inspection identified several interim improvements including repainting the holding lines, increasing the level of lighting, and dual signing the Percival Street approaches with additional larger "Give Way" signs to make it more prominent that motorists travelling along Percival Street have to "give way" to traffic on Gilbert Street.

MORIARTY ROAD FOOTPATH EXTENSION

The design for the footpath extension on the western side of Moriarty Road, Latrobe, between Forth Street and Torquay Road, is complete and currently out for quotations.

It is expected that a successful contractor will be appointed soon with the works to be completed before the end of the year. Residents impacted by the works will be notified prior to works starting onsite. This project is funded substantially by the State Government under the Vulnerable Road User Program.

BUY LOCAL, EAT LOCAL, STAY LOCAL

This holiday season, visit local shops, boutiques and art studios when searching for that perfect gift.

Buying local supports small business owners, makers, and artists who bring vibrance to the community and limit carbon emissions that shipping items from the mainland (or around the globe) would create.

Tasmania's crisp, clean air, fertile soil, and skill generational agricultural community means that locals get some of the best food in the country. Support local cafes and restaurants by dining in or taking away knowing you are purchasing locally grown produce and reducing your carbon footprint.

With interstate borders opening and closing and international travel still uncertain, holiday at home this year and experience the local area through the eyes of a tourist.

For ideas on where to shop, dine, explore, or holiday visit the new Visit Latrobe & Port Sorell website, Facebook page, or Instagram page. Or stop in at the Latrobe Visitor Information Centre for help from one of the knowledgeable volunteers. The Latrobe Visitor Information Centre is located on James Street, Latrobe, behind the Latrobe Memorial Hall.

Act locally and think globally!

REGISTER YOUR BURNS

Local landholders are urged by the Tasmania Fire Service (TFS) to register any burn-offs they are conducting on their property.

“At this time of year, we start to see an increase in calls to escaped burns and burn-offs that are in control but have not been registered on the TFS map,” said Regional Chief Shane Batt.

“Registering a burn is not an onerous task, nor is it designed to be a barrier to landholders conducting their bushfire mitigation activities. It provides TFS with information that populates a map on the TFS website so people can check for burn-offs before they report a fire.

If TFS receives a call to a smoke sighting or a vegetation fire and there is a burn registered in the area, the landholder will be contacted before the brigade responding to see if assistance is required. If the burn is not registered and it is reported as a fire, the local volunteer fire brigade will respond to the property as an emergency incident.

So, the benefit of registering a burn is that TFS is aware of any fires in the landscape, and the risk of an unwanted callout from the local brigade to your burn off, is reduced,” Mr Batt said.

People who want to conduct hazard reduction burns are encouraged to use the Spring months, provided the winds are light, temperatures are low, and they have preparations in place.

Anyone planning on conducting a hazard reduction burn should remember to:

- Check fire restrictions with your council and register your burn with TFS on 1800 000 699.
- Apply for a fire permit if required.
- Check and monitor weather conditions - particularly wind.

- To avoid unnecessary calls to emergency services, notify your neighbours beforehand.
- Leave a three-metre fire break, free from flammable materials down to bare earth around the burn.
- Have sufficient equipment and water to stop the fire from spreading.
- Never leave a burn unattended - stay for its entire duration.
- If your burn-off gets out of control, call triple zero (000) immediately.
- For more information about preparing your property, visit www.fire.tas.gov.au

YOLLA CO-OP

EXPANDS TO LATROBE

The Yolla Co-Op, specialising in rural merchandise, premium pet food and supplies, is opening on 1 December at the former Cherry Shed on the corner of Gilbert Street and the Bass Highway, Latrobe.

Retailer owned by Tasmanian farmers with profits staying in Tasmania, the Yolla Co-Op was established 45 years ago and continues to maintain a competitive pricing structure in rural products across its existing stores at Wynyard and Smithton.

Ben Davis, General Manager, said “with a considerable number of members in the area and people that already purchase from us along with potential for growth in that space, the opportunity to expand the Co-Op at such a strategic location - right on the Bass Highway, central to the whole of northern Tasmania but so close to town - was hard to pass up.

I’ve spent a bit of time at the Latrobe site since acquisition and have been surprised at how busy the town of Latrobe is. It is so hard to be a thriving and vibrant township so close to a major centre

however it is obvious that locals support local businesses, and we are really looking forward to value adding to the community.”

The Yolla Co-Op at Latrobe will employ five new employees and open Monday to Friday from 8:30am until 5:00pm and Saturdays from 9:00am until 12 noon.

HAVE YOUR SAY ON MENTAL HEALTH

Relationships Australia has been engaged state-wide to develop municipal based Community Action Plans (CAP) to identify opportunities to keep communities as safe as possible when it comes to positive mental health and wellbeing, while also working to reduce rates of suicide.

The first step in this is to talk with you about what a CAP could look like in your community.

To achieve this, Relationships Australia will be facilitating community consultation sessions in the Latrobe and Port Sorell areas over coming months.

By sharing your thoughts and opinions, you can help guide where to focus efforts to develop appropriate and relevant actions to improve community wellbeing and positive mental health, as well as opportunities for you to be directly involved in making a difference in your community.

If you are interested in participating in the community consultation, please register your name, email address and preferred consultation location with Melanie of Relationships Australia at melaniec@reltas.com.au. You will be informed when a date and time has been determined.

This project is funded by the Tasmanian Government with support from Latrobe Council.

NEW EXHIBITION AT AUSTRALIAN AXEMAN’S HALL OF FAME

When was the last time you visited the Australian Axeman’s Hall of Fame? If it was prior to 2021 then you’re missing a wonderful new exhibition.

It is generally thought that the thrilling sport of woodchopping started with a controversial wager between a Victorian and a Tasmanian axeman at Sprent in 1876. The history was less certain, with wagers and bets taking place wherever two or more axemen, or their backers, had spare cash and a competitive streak.

The official sport with handicapping, rules and multiple competitors began in Latrobe in 1891, at Atkinson’s saleyards. If you wander down Barclay Street you’ll see a plaque that marks the spot.

A local newspaper described the scene: *“Before the events began the ground resembled Stonehenge or some other equally druidical scene, the massive and regular blocks to the number of eighty having been placed in regular position on end.”*

Between 3,000 and 4,000 people attended (Latrobe’s population at the time was only about 1,500) and special trains from Launceston and Ulverstone brought patrons and the Governors of Victoria and Tasmania. Competitors came from all Eastern States and New Zealand. Tom Reeves of Barrington took out the Champion Chopping Match (30” standing log) in 6 minutes and 22 seconds.

The sport has since spread from its spiritual birthplace, Latrobe, to all Australian States and to many other countries around the world.

If you want to learn more about this unique sport, its history, and amazing champions, visit the Australian Axeman’s Hall of Fame Museum at Bells Parade, Latrobe on Tuesday to Saturday 10.30am to 3:00pm and Sunday 9:00am to 3:00pm.





KEEP ON TOP OF COVID

COVID-19 VACCINATIONS

Get vaccinated to protect yourself, your loved ones, and your community from COVID-19.

Book now. Call the Public Health Hotline 1800 671 738 or book online at coronavirus.tas.gov.au/booking

LOCAL COVID VACCINATION OPTIONS

The expansion of local COVID vaccination options to include walk in capacity at pharmacies continues to provide residents with the ability to be get vaccinated against COVID.

So where can you go to get vaccinated?

The Latrobe Family Medical Practice at 45b Gilbert Street, Latrobe have opened their Pfizer clinic to the public aged over 30. Bookings are essential by calling the practice on 6426 1141. The Port Sorell Medical Centre at 81 Club Drive, Shearwater are vaccinating their existing clientele by appointment on 6428 7720. Both Terry White Chemmart at 45 Gilbert Street, Latrobe and Amcal Pharmacy at Shops 4-6, 11 Poyston Drive, Port Sorell can vaccinate those aged 12 years and over with the Moderna COVID-19 vaccination. This includes those aged over 60. Bookings can be made by phoning 6426 1102 or 6428 6548 respectively.

MERSEY HOSPITAL REDEVELOPMENT REVIEWED

In 2017, the Australian Government transferred ownership of the Mersey Community Hospital to the Tasmanian Government through a ten-year funding deal of \$730.4 million, *“more than twice the amount provided for the Royal Hobart Hospital Redevelopment”*. These funds are quarantined for use at the Mersey with a numbers of facility upgrades occurring to date.

A Parliamentary Standing Committee are currently considering the proposed \$37m theatre and outpatient clinic redevelopment project for the Mersey Community Hospital.

This project involves an additional endoscopy unit and redeveloped day procedures unit; expansion of recovery and theatre spaces; expanded outpatient clinics; new and upgraded staff facilities and new and upgraded building service and equipment.

A new Rural Medical Workforce Centre will also be established at the Mersey to support the recruitment and retention of permanent doctors for the region, with an investment of \$4.3 million.

The Parliamentary Committee’s role is to gain an understanding of the current facilities, the need for the redevelopment and the works that will be undertaken as part of the redevelopment.

At a recent public meeting in Latrobe, the Department of Health presented its case that the works are needed and are a good use of funds. The public were also invited to comment.

The Committee also participated in an onsite inspection, meeting with personnel who clarified many technical matters around the project.

The committee is considering all the evidence received and will decide on whether the works can proceed. The committee can only approve or not approve the works. It does not have the power to amend or recommend changes. Once the committee makes its decision, a written report is prepared summarising the

evidence and formally relaying the committee’s decision. The decision is made public once that report is tabled in Parliament, and only once this has occurred can work commence, if indeed the project is approved by the committee. Further information will be published on the Committee’s webpage - www.parliament.tas.gov.au/ctee/Joint/PWC/pwc.html - at various stages, concluding with the publication of the Committee’s report.

DEMENTIA CAFE

The term dementia refers to a range of different conditions which have an impact on thinking, memory, and behaviour. There are over 100 different conditions that can cause dementia, the most common being Alzheimer’s Disease and Vascular Dementia.

People living with dementia and their care givers often experience loneliness. Their social world can become much smaller as friends and family may drop away, and the stigma associated with dementia can make people feel unwelcome in their own communities.

Social connections are important for all of us and that includes people living with dementia and their care givers.

Dementia-friendly cafés can increase opportunities for connections and social support for people living with dementia and their care givers in a shared community setting.

Michael Dixon is seeking expressions of interest to establish a dementia café in the Port Sorell area. To register your interest, please phone Mr Dixon on 0484 194 729.

CHECK IN TAS APP UPDATE

If you frequently visit the same shops or want to save time checking into your own workplace, the Check In Tas App has now created a *‘Quick Check In’* button.

To access this feature, go to the top, right hand side of the App where you will see a clock. When you tap the clock, it will bring up a list of places that you have been to recently. Click on the correct listing and it will check you in again without the need to scan at the venue.

Have you noticed that public playgrounds, skate parks, parks and ovals now have a Check In Tas QR code?

As these locations do not have staff present, councils are not required to provide alternative check in options.

The Department of Health advise that requiring a QR code at these locations is a precaution in case, or when, we get community cases of COVID-19, to provide effective contract tracing. For full details of locations where the Check In Tas App applies, go to <https://bit.ly/3mo85ic>



A TRAIL EVENT FOR GARDEN LOVERS

For those who delight in beautiful gardens and appreciate art and nature combined, a wonderful opportunity awaits you over the weekend of 4-5 December.

Six unique gardens of members of the Latrobe Garden Club will be open for viewing throughout Latrobe and Tarleton from 10:00am until 4:00pm each day. Inhale the fragrant perfumes of cottage gardens; stroll through larger rose gardens set around an historical home; be enchanted by the lakeside birdlife and beautiful gum trees set on many acres; look out over the sea beneath the large spreading oak trees and wonder at the sculptures dwelling beside rare species of plants.

All this with morning and afternoon tea to tempt the taste buds, plant stalls, and art to admire and purchase.

Don’t miss this wonderful weekend with all gardens COVID compliant.

The cost is a low \$10 for the six gardens. Pre-bookings for this event can be made online at <https://bit.ly/3msvrmT>.

For more information, contact Mandy (0429 590 249) or Cheryl (0418 517 577).

FREE PUBLIC CPR WORKSHOPS

The Port Sorell Surf Life Saving Club (SLSC) is encouraging residents to learn CPR through a series of free public workshops. "9 in 10 people won't survive an out-of-hospital cardiac arrest, so the more people we have in our community who know how to perform CPR the better" said the club's Training Manager, Neil Hargreaves.

"Over 70 of our volunteer surf life savers are trained in CPR, but we would like to offer this opportunity to maximise the number in the community who have the knowledge to assist others in their time of greatest need."

The initiative was made possible through Latrobe Council's annual community grants scheme, which provided funding to purchase new training manikins for the club. These new manikins assist the club in training its surf life savers in high performance CPR, providing instant feedback on the effectiveness of the CPR. First aid and CPR training are also delivered as part of the club's Youth Development program.

Residents, community groups and businesses are asked to contact

the club if they are interested in participating in an informal session to practise CPR at 10:00am on Sunday, 14 November. Further details, and a list of other dates, can be found on the PSSSLSC Facebook page - www.facebook.com/portsorellslsc.



BUSHFIRE READY NEIGHBOURHOODS

The Squeaking Point Phone Tree Network was set up in 2017 after a meeting with residents was held by the Tasmania Fire Service (TFS) to discuss the high risk of a bushfire in the immediate area. With only one way in or out of the area, it was important that residents had a bushfire plan and an early warning system. Squeaking Point extends from Gardams Road and Manouka Drive and along Parkers Ford Road to Woodbury Lane and Squeaking Point Road back to the Rubicon Estuary.

A Phone Tree is a system where all those registered residents in that area are contacted by a local area "Activator" via text if there is a serious bushfire risk in the zone. This enables them to instigate their Bushfire Survival Plan - whether to leave or stay and defend their property. After several trials, the Phone Tree has evolved to what it is today, where an Activator simply sends out a text to all on the list which makes it easier to manage. This is a community-based network, it does not involve the TFS (although they are always there to advise), the work is undertaken by the community as a group. With Linda Cornford deciding to step down as Activator and several committee members also stepping away from the Phone Tree, more residents are sought to become involved to keep this important network going.

The work required needs you to speak with residents. Linda and other committee members will be available to support new members of the committee as they find their feet.

If, you would like to know more or if you would like to join the Committee, please contact Linda by emailing: lindacornford@bigpond.com or by phoning 0409 631 418.

THE POWER OF PEOPLE INSPIRES!

It's not hard to imagine what campers can do to 15 pushbikes - when they have perfect riding conditions and the shops, and coastal paths are only a short ride from the camp. They were certainly showing more than the average wear and tear. Thanks to the generosity and the skill of Patrick Calmels and John Wanless those bikes, plus maybe a couple more, will be at Camp Banksia, in the shed, with a few new parts, or second-hand parts that have come from bikes that could not be repaired or bikes that Pat found at the recycle centre, and the fun will be on again. It is so easy for Camp Banksia and the Latrobe Council to say thank you to Pat and John and they do so with the greatest of sincerity, but there will be no greater appreciation for their amazing contribution than the smiles they will see on the faces of the campers as they ride their bikes to the shops and the beaches. It is hoped that Pat and John get to see that regularly. Thanks, Pat and John - your efforts are greatly appreciated.



FENCING WILDLIFE FROM GOLF COURSE

The management of wildlife in and around the Port Sorell Golf course has provided a significant challenge for the club and major issues in the management of the fairways and greens for golfers and those using the area for recreation.

The club is making every effort to ensure gates are provided on existing walkways and access points to ensure traditional use of the area can continue. They have also undertaken to design those gates to ensure they remain effective in minimising wildlife access to the course.

The Port Sorell Golf Club was recently successful in securing \$58,000 through the Tasmanian Government's 'Improving the Playing Fields Grant Program' to assist with the construction of a vermin proof fence to further protect the golf course. This work will involve the establishment of a fence offset along the boundary of the golf course to limit the potential impact on the neighbouring properties and vegetation while protecting the manicured golf course from the dining delights of wildlife.

This is particularly the case along the boundary adjoining Pitcairn Reserve where a fence established on the boundary would require significant clearing and removal of vegetation to allow construction and future maintenance of the fence. The club's initiative in choosing to realign the fence inside the existing boundary will minimise vegetation clearing and alleviate potential concern of reserve users and the public more widely. All up, this project is estimated at \$70,000, inclusive of members in-kind support. Council commends the club for their initiative in accessing funding through the State Government's program and will also contribute \$7,500, which will see the course maintained as a viable recreational area for golfers and residents of the local area.

LATROBE PARKRUN

Efforts to establish a parkrun in Latrobe have been steadily progressing since first raised in March, and it is hopeful that approval from parkrun Australia is just around the corner to enable this event to commence.

The main barrier to the preferred route, along the coastal pathway from Bells Parade towards Ambleside and return, has been that vehicles can potentially intermingle with parkrun participants. From a risk mitigation perspective, the safety of participants is paramount. parkrun Australia also didn't want a solution that would create work for the volunteers, who are essential to making this event happen.

We believe that a solution has been identified with the event proponent waiting on the final sign off from parkrun Australia prior to submitting the final details to Latrobe Council for approval. If you are interested in assisting with the staging of parkrun in Latrobe on Saturdays, please email michelled@latrobe.tas.gov.au.

NEW CARAVAN PARK MANAGERS

We welcome Gavin Connor and Michelle Jungfer as the new Managers of the Port Sorell Caravan Park.

Since moving to Tasmania 30 years ago, Mr Connor has spent most of his time working in parks, reserves, and stormwater management for several southern councils. He was even part of a crew that stripped Bellerive Oval and installed a new irrigation system. Mr Connor has also worked as a horticulture trainer and still does the occasional class, teaching

Antarctic expeditioners how to grow food hydroponically.

Ms Jungfer's customer service credentials come from her time working in administration at Drysdale and managing the box office at the Tasmanian Symphony Orchestra. She has been working as a data analyst for the State Government for the past ten years.

They have both recently spent the past year travelling about Tasmania and were ready for a change. They are delighted to have been appointed as the new managers/caretakers of the Port Sorell Caravan Park. *"We'd like to say thanks to everyone who has welcomed us to Port Sorell and to the caravan park,"* said Ms Jungfer.

WHO WILL YOU NOMINATE?

Nominations are open for the 2022 Latrobe Municipality Australia Day Awards, which celebrate the achievements and contributions of highly respected residents who contribute to the vibrancy of the Latrobe Council area.

They inspire us through their achievements and challenge us to make our own contribution to create a better municipality.

This year has been particularly tough but there are still people in our community that have made a difference and inspire and strengthen our community.

These are normally people that do not do what they do for recognition but because they want to make a difference in their community. Please take the time to nominate them so we can all show our appreciation and celebrate their achievements and inspiring stories.

Nomination forms are available from the Latrobe Council office or online at www.latrobe.tas.gov.au/community/austda awards, closing on 1 December.

SNAKES ALIVE

Summer is the season of snakes and we have all three Tasmanian species in the Latrobe Municipality.

Sighting a snake can be an alarming experience and may be seen in the most surprising of places including towns and industrial areas. Many of us react with alarm when we see a snake but, if you stand still and watch (from a safe distance), you can observe a fascinating reptile go about its everyday life.

The most important thing to do to avoid a bite is to leave snakes alone.

Although most will only be passing through, snakes do occasionally take up residence in backyards or parks to soak up the warmth from the sun to regulate their body heat. If you do find a snake at home or outdoors:

- Stay calm.
- Do not approach the snake and secure children and pets safely away from the area.
- Stand very still or back away slowly, always watching the snake.
- Keep a safe distance so the snake does not feel threatened.
- Never try to kill or capture a snake as most bites occur whilst attempting to do this.

If you are concerned about snakes on your property, trained snake handlers can catch and relocate snakes. Watch the snake from a safe distance and contact either Reptile Rescue (0499 116 690) or Snake Relocation (0487 389 123). Costs apply but what's the value of peace of mind?

If you are bitten by a snake, apply first aid immediately and call '000' for ambulance assistance.

CHECK YOUR (PARKING) DISTANCE

When parallel parking on a street, it is common sense to park as close as you can to the kerb or side of the road, but did you know that you must also park in the same direction as vehicles going along that side of the road.

To allow vehicle maneuverability, a gap of at least 1m must be between your car and other vehicles in front or behind you (where there are no parking bays).

One of the most common and frustrating situations is not being able to drive along a street when cars are parallel parked on each side.

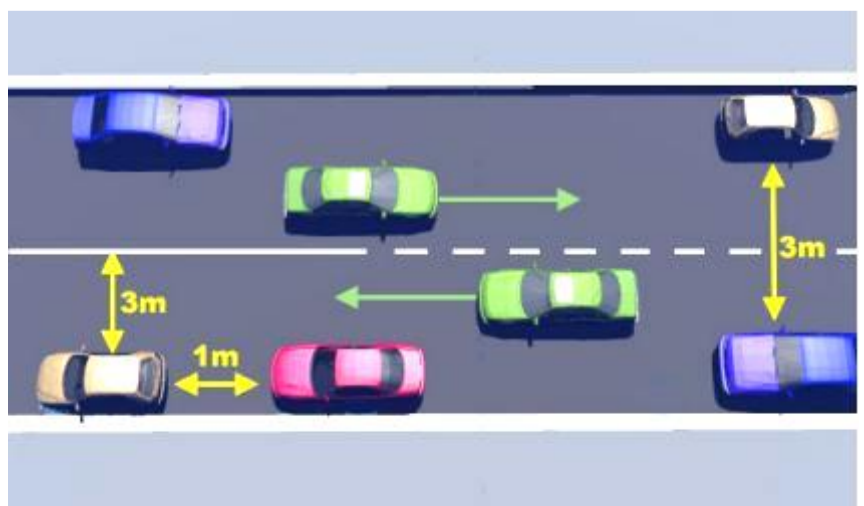
Under the Tasmanian Road Rules, a gap of at least 3m must be left between the side of your car and double continuous dividing lines, a single continuous line, or a median strip OR if a broken or no dividing line, at least 3m of the road next to your car clear to enable traffic to pass, as shown in the diagram to the right.

While you think that you may have sufficient space, the width of most streets (other than main streets) is generally insufficient for vehicles to be parked parallel to each other. In these instances, please park further along a street so moving vehicles can weave along the street.

Parking is also prohibited on a bicycle path, footpath, shared path, dividing strip, painted island or nature strip (except your own nature strip).

Parking or stopping too close to a driveway can obstruct vehicular access to/from a property. Never park on or across a driveway, even your own, unless you are picking up or dropping off passengers or goods, but even then, for no more than 2 minutes and don't leave your vehicle.

So, before you park and leave your vehicle, check your distance. The enforcement of parking infringements is a Tasmania Police responsibility. If you have any ongoing concerns, please phone their non-emergency number (131 444).



HOW DOES YOUR GARDEN GROW?

In November it is time to plant flowers and food plants to grow through summer and autumn. Water new plantings and edibles regularly, especially on hot or windy days.

WHAT TO SOW AND PLANT IN NOVEMBER:

ORNAMENTALS: Alyssum, amaranthus, arctotis, aster, begonia (tubers), bellis, calendula, california poppy, candytuft (seedlings), canterbury bells (pots), carnation (pots), celosia, cornflower, cosmos, dahlia (tubers), delphinium (seedlings), geranium (pots), gerbera, impatiens (seedlings), larkspur, lawn seed, lobelia (seedlings), marigolds, native plants (pots), nasturtium, petunia, rose (pots), russell lupins (pots), salvia (pots), scabiosa, snapdragon, succulents (pots), sunflower, tithonia, zinnia.

PLANT: Potatoes, globe artichokes and seedlings of Brussels sprouts, tomato, capsicum, kale, eggplant, zucchini, cucumber, sweetcorn, cabbage, cauliflower, celery, broccoli, silverbeet, lettuce, leek, Asian brassicas, and roots.

SOW DIRECT: Asparagus, bush and climbing beans, beetroot, broccoli, Brussels sprouts, cabbage, Asian brassicas, capsicum, carrot, cauliflower, celery, eggplant, kale, kohlrabi, leek, lettuce, salad onion, parsnip, late peas (cold districts only), pumpkin, winter squash, radish, rhubarb, summer spinach, swede, sweetcorn, tomato, turnip, and zucchini

By December, there's lots of growing time for flowers and edibles. Plant seeds to produce flowers in autumn and mix it up by choosing a range of varieties to grow so your garden has a range of ripening times to extend your harvest and flower colour.

WHAT TO SOW AND PLANT IN DECEMBER:

ORNAMENTALS: Alyssum, amaranthus, arctotis, aster, california poppy, canterbury bells, carnation, celosia, cornflower (seedlings), cosmos, cyclamen, delphinium, everlasting daisy, geranium (seedlings), gerbera, gomphrena, hydrangea (pots), impatiens (seedlings), lobelia (seedlings), native plants (pots), marigold, nasturtium, petunia (seedlings), primula (seedlings), rose (pots), salvia, succulents (pots), sunflower, tithonia, zinnia.

PLANT: Late potatoes, globe artichoke suckers and seedlings of Brussels sprouts, tomato, capsicum, kale, eggplant, zucchini, cucumber, sweetcorn, cabbage, cauliflower, celery, broccoli, silverbeet, lettuce, leek, Asian brassicas, and roots.

SOW DIRECT: Asparagus, bush and climbing beans, beetroot, broccoli, Brussels sprouts, cabbage, Asian brassicas, capsicum, carrot, cauliflower, celery, eggplant, kale, kohlrabi, leek, lettuce, salad onion, parsnip, pumpkin, winter squash, radish, rhubarb, summer spinach, swede, sweetcorn, tomato, turnip, and zucchini.



STATION SQUARE BEAUTIFICATION PLANS

With a new committee come new ideas for clubs. The Latrobe Garden Club have adopted the regular maintenance of the Darrell Baldock Memorial at the Latrobe Recreation Ground and their recently proposed project for the beautification of Station Square, Latrobe with the installation of hanging floral baskets has received in principle support from Latrobe Council.

“The club strongly believe that hanging baskets and plants of colour will bring a vibrancy and energy to this public space that will invite both residents and visitors to spend time enjoying the ambience” said Ms Lewis.

While the proposal still needs to be fleshed out a little more, it is hoped that the hanging baskets will be ready for installation early in the new year.

The Latrobe Garden Club's proposal is to pot up four 60cm wide hanging baskets with sphagnum moss to retain moisture, potting mix and a water retention product and then plant them up with annuals for installation during Spring, Summer and Autumn. Council would be responsible to watering the baskets then, in Winter, the baskets would be taken down and Latrobe Garden Club members would replenish the plants and nurture them for reinstallation the following Spring.

The Latrobe Garden Club meets during the day on the 3rd Monday of the month. To find out more, contact either Ann (0410 686 306) or Donna (0400 341 418).

HAWLEY RESERVE PLANNED BURN

The Parks and Wildlife Service are planning to undertake a fuel reduction burn during this Spring in the Hawley Reserve, as part of the state-wide Fuel Reduction Program, subject to favourable burning conditions.

This program aims at reducing the bushfire risk to help protect lives and communities. The total area of this burn will be approximately 22 hectares and is likely to take 1-2 day/s to complete.

This burn will occur at short notice under suitable weather conditions and will generate smoke, flames, and ash.

Residents near this burn are requested to assist to minimise impacts from this planned burn to themselves by taking some important steps prior to the planned burn commencing.

During burning operations public access to this area will be restricted. The public will be asked to remain well out of the burn site while the burn is taking place and for the following days until safety checks have been made along tracks and trails. Please comply with directions from personnel and signage in the area.

Smoke may persist some days afterwards depending on wind conditions.

If you have queries in relation to this planned burn please contact Nat Brown, Fire Operations Officer on 0409 868 467 or Prospect Office on 6777 2179.

You can learn more about the fuel reduction program at www.fire.tas.gov.au.

MOUNTAIN BIKING BENEFITS ECONOMY

The Wild Mersey Mountain Bike Trail Warrawee Trailhead has been the starting point for two Mersey Valley Devonport Cycling Club (MVDCC) MTB events. MVDCC MTB hosted a 90-minute race throughout the Wild Mersey Warrawee trails with over 70 riders registered. The race showcased the local and talented mountain biking community distributed amongst five groups, one of which was dedicated to e-bike riders.

The event's success led to the development of MVDCC's next race, the Wild Ride Railton Express. Riders rode over 35 km of trails, starting in Warrawee, through Railton and finishing in Sheffield. These two events are just the beginning of the Wild Mersey Mountain Bike Trails being an event destination as riders learn about the world-class trail network.

These types of events bring mountain bike riders, their friends and family to the Latrobe area. Riders are often looking to fuel up pre and post rides, so food and beverages are on the top of their list of local businesses to visit. Family and friends are more likely to explore retail outlets in addition to cheering on their loved ones while racing. This brings an economic boost to local businesses.

Latrobe businesses interested in attracting more mountain bike riders can become MTB Accredited through TICT. Visit <https://bit.ly/3mzl0On> to learn more about the accreditation program.

MILESTONE PROJECT FOR BRIGADE

Volunteer members of the Port Sorell Fire Brigade have now completed locating, painting, cleaning, and flushing all 556 fire hydrants in the Port Sorell area. This provides the community with an elevated level of protection and assures the crews and others responding to the Port Sorell area know exactly where to find reliable and accessible water supplies in the event of an emergency.

The support of residents has been appreciated, with their smiles, waves or a quick word of thanks and slowing down to 40kph when motoring nearby.

It's taken 10 months to complete phase one and now they start phase two which includes replacing marker posts and blue cat eyes and a regular flushing program to ensure the hydrants are always working well. The brigade thanks TasWater and Latrobe Council for their assistance.

BARBIE MASTERS

Each Friday, Lions Club of Port Sorell members sell 'chook raffles' at Shearwater Resort to raise funds for nominated charities of events. Money raised through the raffles are distributed four times a year. The Lions Club is very appreciative of the contributions from patrons and management of Shearwater Resort.

The club continue their fundraising by participating at a Bunnings BBQ on 1 November and 2 January and are dab hands at cooking snags on the barbie. This will be offered locally when members run a barbecue at the Reel Keen Fishing Competition. Call by the site at the entry to the boat ramp along East Esplanade, Port Sorell and support the club.

Members are also manning the gates at the Devonport Harness Racing on 26 December. If you are lucky and enter through the Gunn Street gate, you will be given a free tip on a "sure thing" in one of the later races; after the Lions member has left the venue!

SENIOR CITIZENS THRIVE

The rebuilding of the Latrobe Senior Citizens Club has seen club membership increase to 55 members with many stating that they "look forward to coming along to a happy, positive and welcoming environment each week." While some come along just for a cuppa and a chat or browse over the trade table, others come for a gold coin lunch and bingo afterwards. Students from Latrobe High School also interact with members weekly and help with serving food and refreshments, for which the club is appreciative.

It has been a busy year for the club with many events including two Cancer Council Morning Teas that raised \$2,100 for the Cole Crusaders Relay for Life Team; hosting a 6-week Persistent Pain Self-Management program; celebration of St Patrick's Day, Easter, Mother's Day, and Footy Finals fever as well as a trip to the Launceston Casino.

Members will shortly dress up in all their finery at the club's Melbourne Cup Luncheon with prizes awarded for Best Hat/outfit. Bingo starts at 1:00pm.

The club's Annual General Meeting will be held on 7 December at 10.30am at Hamilton Hub, 18 Hamilton Street, Latrobe for all members followed by a Christmas lunch at the Lucas Hotel. Cost is \$25 with bookings essential to Maree (0438 329 307) or Robyn (0419 529 763).

The committee thank all members and volunteers for their help and support throughout 2021 and making the year a success.

Activities resume on 1 February when current and new members will be made to feel welcome.

CHAT 'N CHOOSE

Chat n Choose continues at the Latrobe Baptist Hall every Wednesday, during school terms, from 10:00am until 12 noon. Participants are invited to bring their knitting, crochet, hardanger work or other craft and join with up to 50 others and

enjoy a chat. Morning Tea is served at 10.30am. The cost is just \$2.

There is also a group for woodturning which is held in the Latrobe Men's Shed. More information contact Nelleka (0405 464 023) or Lorraine (0401 266 302).

COMMUNITY PROJECT FOCUS

The Latrobe Men's Shed continues every Friday from 9:00am until 12 noon in Kings Lane, Latrobe, concluding with a BBQ.

If you have a community or personal construction project, the shedders can help you out with.

A great time of fellowship is guaranteed with a toolbox meeting and morning tea at 10:00am. New members are welcome. More information contact Ralph (0405 464 023) or Peter (0409 978 514).

PRE-SCHOOLER

PLAYTIME ACTIVITIES

Latrobe Community Playgroup continues every Friday morning from 10:00am in the Latrobe Baptist Church Hall, Gilbert Street, Latrobe.

All parents/carers are welcome to bring their little ones, up to age 4, and join with up to 20 others for a fun time of play. Story time and singing finishes each morning around 11.30am

More information contact Nelleka (0405 464 023) or Lorraine (0401 266 302).

MEET, GREET AND EAT

The Meet, Greet and Eat monthly socialisation evenings commenced in October and are held on the third Friday of the month, from 6.30pm, at the Wesley Vale Community Church Hall, Port Sorell Main Road, Wesley Vale. Bring a plate to share; tea/coffee are provided.

This a free evening and a chance to say "hello" to your neighbours, chat, play board games and cards, if you wish.

Children are most welcome. There is easy disability access and COVID safe compliance.

For more information, contact Jan Bingley (0419 931 831).

RECYCLING INITIATIVES REWARDED

Latrobe Primary School were the recipients of a \$1,500 grant through the 2021 Keep Australia Beautiful Tasmania School's Sustainability Awards for their submission "Spotlight on Sustainability".

Enthusiastic students, supported by teacher Amanda Von Schill and Rethink Waste coordinator, Owen Walker, proposed to re-establish sustainability practises within the entire school community. Lead by students through peer tutoring, they will conduct a waste audit to understand the changes needed to reduce waste going to landfill. Students will also experiment with marketing enterprises such as making bees-wax lunch wrappers as an example of reusing.

The awards are supported by the Tasmanian government and sponsored by Hydro Tasmania.

Pictured: Christine Moore, School's Sustainability Officer for K.A.B.Tas (right) presenting a novelty cheque to the school business manager Nikki Jackson with Mayor Peter Freshney, Owen Walker from 'Rethink Waste' sustainability lead teacher Amanda Von Schill and enthusiastic gardening students Jett and Tommy.



INTRODUCED TO CROQUET

The Latrobe Croquet Club recently hosted the Tasmanian Classic tournament which saw 20 players from all over the state competing in two teams of ten.

The team captains were Phil Roach from Kingston Club and Patsy Paine from the Latrobe Croquet Club. The tournament ran for three days with Phil Roach's team winning by 16 matches to 13.

The club recently introduced Latrobe High School students to croquet as part of their sport curriculum. The club are hopefully of seeing more junior members as a result. The lawns have recently enjoyed some improvement thanks to a state government grant allowing the club to purchase a new lawn mower, which arrived in September.

If you would like to give croquet a try, please ring Chris (0499 990 239).

Introductory lessons are free, and all equipment is supplied.



Pictured: Latrobe Croquet Club member, Steff Anderson, checks out the new mower

CELEBRATING 150 YEARS OF TASMANIA RAILWAYS

To celebrate 150 years of Tasmanian Railways, Libraries Tasmania is showcasing favourite photographs and plans that document the history of our state's railways.

From staggering feats of engineering and the enabling of complex mining operations, to employment for men and women and family social outings, railways have played an important role in the economic and social history of Tasmania for 150 years.

The story of the Tasmanian Railways is one of great success, but also of hardships, economic failures, and disasters. It is a colourful and dynamic history.

The 150 Years of Tasmanian Railways photography exhibition is now open online via the Libraries Tasmania website.

To read more about the history of Tasmanian Railways, and for more exciting articles, take a look at the Tasmanian Archives and Heritage blog. Come into Latrobe Library if you need help navigating the Libraries Tasmania website and their friendly staff will assist you.

The opening hours for the Latrobe Library, 113 Gilbert Street, Latrobe are 1:00pm until 5:00pm every Monday, Tuesday, Thursday, and Friday.

BRINGING COMMUNITY BACK TO THE BEACH

In their ongoing mission to 'bring the community to the beach', the Port Sorell Surf Life Saving Club (PSSLSC) won a Healthy Tasmania grant and is designing a program of community activities which will include short course offerings of activities such as first aid basics, yoga, SUP boarding, beach play and light exercise. Keep an eye out for the calendar. The dust has settled around the building project at the club with recent instalments from the Buy a Brick campaign and fun murals created by Caroline Henwood included in the area, along with grass seed and gravel being laid. The club hopes to add other elements over time that will make the area picnic-ready for everyone to enjoy.

Members of PSSLSC are keen to see newcomers on the beach as Nippers or as part of the growing group of active adults taking part in surf sports offerings, patrolling duties, and any of the many volunteering jobs on offer. Membership enquiries are welcome at any time. If you would like to know more, pop along to the club on Thursdays between 5:00pm and 6.30pm or Saturdays between 10:00am and 12 noon to catch up with one of the team. Alternatively pop a message on the club's Facebook page:

www.facebook.com/portsorellslsc

EVOLVING ARTS

A wide variety of art was craftily created by members of Rubicon River Arts (RRA) and well received by patrons at the recent Port Sorell Spring Fair. The opportunity for local artisans to not only sell their wares but interact with the public and receive firsthand feedback is always welcomed and continues to invigorate members' passion for their craft.

A member's exhibition, in which all works are for sale just in time for Christmas shopping, is currently installed at the Latrobe Arts Hub, 21 George Street, Latrobe. Come in and peruse the HUB for a gift from among the amazing range of artworks on display - perhaps a painting, pot, sculpture, basket, drawing, woven scarf, tatting book mark or a print. Some very successful fibre and fabric workshops have been held in recent months with extra workshops resulting due to demand. The last work for 2021 - Limestone Carving - will be held in November (refer to Coming Events). The Latrobe Arts Hub is manned by RRA members from Thursday to Sunday, 10:00am until 2:00pm. If you wish to ensure someone is there when you visit, contact them ahead of time via rubicon-river-arts@googlegroups.com and they will arrange for a member to be there to welcome you or your group.

STORIES TO BE TOLD

The Tasmanian Family History Society Mersey Branch has many local history records available for researchers, from birth, death and marriage records to Parish baptisms and marriages.

Among the library holdings are books with district history as well as stories of individuals and families.

If you're interested in the history of your family in this district, go and pay them a visit. You never know what 'gem' is to be found.

The Mersey branch is located behind the Latrobe Library at 113 Gilbert Street, Latrobe and open Fridays 10:00am until 3:00pm. Enquiries should be directed to 6426 2257 (Fri) or at other times to Sue-Ellen (6428 6328) or Ros (0476 008 531). The Tasmanian Family History Society Mersey Branch will close for the Christmas break from 10 December, reopening on 7 January.

LITERACY FOR LIFE

The Reading Club at Latrobe Primary School (LPS) is an initiative from their Quality Teaching Coach (Literacy), Miss Anita Richards.

Every Wednesday, during the lunch break, the library has been open for Years 3-4 students, and alternate Wednesdays open for Year 5-6 students, regularly attracting around 15-20 student's participation in the Reading Club. These keen readers are so engaged in this reading opportunity.



"It's wonderful to see their excitement as they come into the Library and motivating to observe their enjoyment for reading. There's a lovely sense of flow and calm in the library as students relax with a good book and explore all that the school library has to offer," said Miss Richards. Mrs Crawford (LPS Library Technician) has offered the students opportunities to suggest books that the library could purchase to add to the school's collection. As these books are purchased, a message is placed inside, inclusive of the name of the student who suggested the book's purchase.

Many students from the Year 3-4 group have also taken up a '10 for 10 Challenge' - a commitment to read for at least 10 minutes a day, every day, for 10 weeks! Reading Club at Latrobe Primary School is thriving.

COMING EVENTS

COVID-19 safe requirements continue to be in effect. When attending an event, please comply with COVID requirements as directed by the event host.

OCTOBER

30 The Danny Kealley Band performs at Mackey's Royal Hotel, 161 Gilbert St, Latrobe from 8:30pm. Free entry.

30-1 Nov Truly Tasmanian Craft Exhibition and Sale at the Latrobe Memorial Hall, Gilbert Street, Latrobe from 9:00am until 5:00pm Saturday and Sunday and 9:00am until 3:00pm Monday. ☎ 0417 132 687 or email ttcraftfair@yahoo.com.au

31 Halloween Mini-Fest at the Little Bush Chapel, 287 Coal Hill Road, Latrobe from 2:00pm until 8:00pm. Cost: \$45pp. Bookings to bushchap.287@outlook.com

NOVEMBER

2 Melbourne Cup Luncheon from 1:00pm at Tranquilles, Gumbowie Dr, Port Sorell. \$45pp for a 3-course lunch with a glass of bubbles on arrival. Bookings - 6428 7555 or 0415 723 874

5 Women of the Moon celebrate the Super New Moon with music and dancing at the Latrobe Memorial Hall, Gilbert St, Latrobe from 8:00pm until 11:00pm. Tickets \$30pp. Online bookings via Eventbrite

8 Latrobe Council Meeting at the Latrobe Council Chambers, 170 Gilbert Street, Latrobe commencing at 5.00pm. All welcome. ☎ 6426 4444.

11 Remembrance Day Services at 10:50am at the Latrobe Cenotaph and Port Sorell Defence Memorial. Wreath layers are asked to register by 4 November by emailing latrobersl2@gmail.com for the Latrobe Service or phone 0407 852 946 (Rod) for the Port Sorell Service

13 Limestone Carving Workshop with Kim O'Brien at the Latrobe Arts Hub, 21 George Street, Latrobe. Learn how to carve this soft stone using files and dremels. Ideal for beginners. \$35 non-members; \$30 Rubicon River Arts members. Register at rubicon-river-arts@googlegroups.com

13 Port Sorell Golf Club Annual Car Park Sale from 8.00am till 2.00pm. Get your produce, books, plants, raffle, sausage sizzle, Bric-a-Brac, homemade cakes, Christmas puddings and preserves.

13 Devonport Stamps, Coins and Collectables Fair at the Latrobe Memorial Hall, Gilbert Street, Latrobe from 10:00am until 3:00pm. Enquiries to 0416 168 485

13 Indian Cooking Masterclass from 11:00am until 4:00pm at Tranquilles, Gumbowie Drive, Port Sorell. Cook a 3-course meal for 4 people to take home and lunch with wine and other

treats on the day. \$250pp. Bookings to 6428 7555 or 0415 723 874

13 Latrobe Speedway featuring Super Sedans, Late Models, Modifieds, Street Stocks, Formula 500s and Wingless Sprints at Speedway Dr, Latrobe. Gates open at 3:00pm; infield racing from 4:00pm; main track at 6:00pm. Costs apply.

13-14 Reel Keen Fishing Club Fishing and Squidding Competition at Port Sorell - Saturday from 1:00pm until 6:00pm and Sunday from 6:00am until 1:00pm. Enquiries to 0419 887 678 or ruby75kombi@gmail.com

14 Community CPR Training at the Port Sorell Surf Life Saving Club, Dumbleton Street, Hawley from 10:00am. More details at www.facebook.com/portsorellslsc

14 Devonport Anglers Club Junior Fish out Day at Taylor's Dam, opposite the House of Anvers Chocolate Factory, Bass Hwy, Latrobe from 10:00am until 3:00pm. www.facebook.com/juniorfishingtasmania

19 Gina Timms, Will Day, Justine Barber and Luke Pearson perform at the Port Sorell Surf Life Saving Club, Dumbleton Street, Latrobe from 7:00pm. Tickets are \$20pp and available from www.eventbrite.com.au

19 Tapas and Art Sale accompanied by local musician Gerry Burke from 6:30pm until 11:30pm at Tranquilles, Gumbowie Drive, Port Sorell. \$15 per dish. Bookings to 0415 723 874

20 Blueberry's Dance Party at Shearwater Resort, Shearwater Blvd, Shearwater at 11:00am. Join Blueberry, Bumblebee, and special dancers for an hour of entertainment. Costs apply. More information available at <https://bit.ly/3D8Iz7m>

21 Traditional High Tea from 1:00pm until 5:00pm at Tranquilles, Gumbowie Drive, Port Sorell. \$45pp. Bookings to 6428 7555 or 0415 723 874

26 European Culinary Adventure from 6.30pm at Tranquilles, Gumbowie Drive, Port Sorell. Travel throughout Europe with this 5-course degustation. \$65pp. Bookings to 0415 723 874

28 Traditional English High Tea from 1:00pm until 5:00pm at Tranquilles, Gumbowie Drive, Port Sorell. \$45pp. Bookings to 6428 7555 or 0415 723 874

DECEMBER

4-5 Latrobe Garden Trail - explore six unique gardens from 10:00am until 4:00pm each day. **Refer to separate article.** Enquiries to 0411 055 549

4 Penguin Island Twilight Swim at North Freers Beach, Shearwater from 5:00pm (time TBC). Entry details at www.portsorellslsc.org.au/swim

4 Latrobe Speedway featuring Sprintcars, Late Models, AMCA, Tassie Sixes, Street Stocks, Formula 500s and **fireworks** at Speedway Drive, Latrobe. Gates open at 3:00pm; infield racing from 4:00pm; main track from 6:00pm. Costs apply.

7 Latrobe Seniors Citizens Club AGM from 10:30am at Hamilton Hub, 18 Hamilton Street, Latrobe. Enquiries to Maree (0438 329 307)

10-18 Decorated Christmas Window Competition in Latrobe. Winner announced at the Latrobe Lions Christmas Parade on 19 December.

11 Shearwater Village Market at 8 Club Drive, Shearwater from 9:00am until 1:00pm. ☎ 0467 580 270

11 Devonport Anglers Club Twilight Junior Fish out Day at Taylor's Dam, opposite the House of Anvers Chocolate Factory, Bass Hwy, Latrobe from 3:00pm until 8:00pm. www.facebook.com/juniorfishingtasmania

12 Latrobe Cemetery Working Bee at the Latrobe Cemetery, Gilbert Street, Latrobe from 10.00am until 11.15am. BYO gardening implements and wear appropriate clothing. Free sausage sizzle and drink at conclusion. ☎ 0417 598 116

12 Port Sorell Carols from 6:00pm at the Port Sorell Primary School, Pitcairn Street, Port Sorell. ☎ 0419 162 691

13 Latrobe Council Meeting at the Latrobe Council Chambers, 170 Gilbert Street, Latrobe commencing at 5.00pm. All welcome. ☎ 6426 4444.

13 Latrobe Council Annual General Meeting follows the monthly general meeting at the Latrobe Council Chambers, 170 Gilbert Street, Latrobe. All welcome. ☎ 6426 4444

18 Shearwater Village Market at 8 Club Drive, Shearwater from 9:00am until 1:00pm. ☎ 0467 580 270

19 Latrobe Lions Walking Christmas Parade and Carols from 6:30pm at the Latrobe Recreation Ground, Gilbert Street, Latrobe. Gates open from 5:00pm. Numbers limited. More info: www.facebook.com/latrobelionsclub.

24 Santa's Tour of Port Sorell with the Port Sorell Fire Brigade. Route and timings at <https://bit.ly/3DxwPf5>

24 Christmas Banquet Pickups from Tranquilles, Gumbowie Drive, Port Sorell. Order your Christmas Banquet: Family of 4 - \$150.00; Family of 6 - \$210.00 or Family of 8 - \$260.00. Order at 6428 7555 or 0415 723 874



COMMUNITY CHRISTMAS CELEBRATIONS RETURN

From early December, many businesses will be taking part in Latrobe's annual Christmas decorated window display competition with the theme "The 12 Days of Christmas". Some of these businesses are generously making their windows available to schools and community groups to decorate. If you are interested in decorating a window, please contact the Lions Club of Latrobe via latrobe@lionstasmanian.org or phone 0438 241 129, and they pair you with a business. Lions Christmas Cakes will be available from several local outlets. Look for the Lions Christmas cake signs.

In the lead up to Christmas, the Latrobe Federal Band will be Carolling in the streets of Latrobe and Port Sorell, commencing on 6 December. They love you enjoying their music and if you can afford to donate to them, they will take requests and you will be supporting the purchase of musical equipment.

On 12 December, the Lions Club of Port Sorell will be hosting Carols by Candlelight at the Port Sorell Primary School, commencing at 6:00pm. This is a big event for the local community as various groups come together to welcome in the festive season. Come and join the occasion by singing away with your neighbours, enjoy a free snag and the kids may even receive a treat from Santa!

With the cancellation of so many Christmas Parades, the Lions Club of Latrobe are very pleased to announce that the Latrobe Lions Christmas Parade will be going ahead from 6:30pm on 19 December but with a difference.

Unfortunately, the Christmas Parade is unable to be presented in its usual street format due to the enormous resources required to

meet COVID requirements.

Instead, the club has reformatted it to a **walking** Christmas Parade around the track at the Latrobe Recreation Ground.

"Locating the Latrobe Lions Christmas Parade within the Latrobe Recreation Ground enables us to monitor attendee numbers, capped at 5,000, social distancing and COVID compliance. The event will also offer food, coffee, and ice-creams options. Given that this is one of the very few Christmas Parades on the coast, it is anticipated that it will be very well supported. Parade participants are therefore encouraged to register and be very specific in participant numbers on their walking float to ensure that we maximise the opportunity for the public to view the show," said Mrs Kae Campbell of the Lions Club of Latrobe.

No vehicles will be permitted in this walking parade however small trailers that are able to be pulled along and well controlled by hand and bicycles will be permitted.

The theme for this year's parade is the same as the window display competition, "The 12 Days of Christmas".

Entries for the Latrobe Lions Christmas Parade are available from Morse's Butchery, the Latrobe Council office or by email from latrobe@lionstasmanian.org.

Like other years, the Latrobe Lions Christmas Parade will be followed by the Latrobe Christmas Carols, this year reverting to a singalong of traditional and well-known Carols. It is hoped to utilise the scoreboard at the ground to display the words for the songs.

Santa's visit to our Municipality concludes on Christmas Eve when the Port Sorell Fire Brigade take him on a tour of the Port Sorell area to see all the children - big and small. He'll have lollies, a big smile, and a wave for everybody so listen out for the Christmas music and fire trucks as they move around the streets. Keep an eye on the Port Sorell Brigade Public Facebook page for the start time and the route Santa will be travelling.

FUTURE EDITIONS

Article deadlines and distribution dates are provided to assist contributors with their forward planning promotion -

Deadline	Edition
18 Nov.....	Jan-Feb 2022
3 Feb	Mar-Apr
4 Apr (Mon).....	May-June
2 Jun.....	July-Aug

Council does not pay for editorial submitted.

Articles may be submitted to the editor by the relevant deadline date via email to michelled@latrobe.tas.gov.au or posting to Latrobe Council, P O Box 63, Latrobe, 7307.

Contributions must be relevant to the Latrobe Municipality and suitable for inclusion. They will be used at the discretion of the editor, in whole or part in the next or future editions.

DISCLAIMER

Although all care has been taken to ensure that information contained in this newsletter is true and correct at the time of printing, Latrobe Council gives no warranty or assurance, and makes no representation as to the accuracy or reliability of any information or advice contained in the newsletter, or that it is suitable for your intended use.

The publication of articles supplied by external organisations does not imply any form of endorsement by Latrobe Council.